



# Lica zgrada

govore o **VREMENIMA** u kojima su zgrade nastajale. Govore o **LJUDIMA** koji su zgrade osmislili i sagradili. Po licima zgrada pamte se njihovi vlasnici, korisnici i stanari.

Svojim licem zgrade odolevaju vremenu i **prkose zaboravu, zauvek se protiveći bezličnosti.**

LICA ZGRADA SE VIDE I **ZATVORENIH OČJU** – LICA SU TU DA OSTANU I KAD POGLEDI PRESTANU.

**MI KREIRAMO TA LICA.** Mi stvaramo **PRIZORE** za pamćenje, **RAZLOGE** za gledanje, **POVODE** za divljenje.

Mi onome svemu što je unutra pomažemo da se pokaže spolja. **I DA TRAJE, KOLIKO GOD MU VEČNOST DAJE.**

MI TRUDOM DAJEMO SMISAO DA BI SE VIDELA ZAMISAO, MI POZNAJEMO POSAO DA BI SE PREPOZNALA IDEJA, NAŠIM RADOM NASTAJE ONO ŠTO DUGO OSTAJE. NAŠA UMEŠNOST OMOGUĆAVA DA SE SRETNU IZGRADNJA I UMETNOST. SVE ŠTO ČINIMO JE ZBOG TOGA DA SAMO JEDNO UČINIMO:

**LICA,**  
bez kojih  
nema  
kvartova  
ni ulica.

Mi smo



**ARMONT**<sup>SP</sup>

Mi gradimo  
**LICA ZGRADA.**





# SADRŽAJ

## CONTENTS

<b>O Nama / About Us</b> . . . . .	6	Metro HoReCa, Beograd / Metro HoReCa, Belgrade . . . . .	42	Tempo C&C, Kraljevo / Tempo C&C, Kraljevo . . . . .	82	<b>Gradili smo i... / We Have Built...</b>	
<b>Projekti / Projects</b>		Bosch, Pećinci / Bosch, Pecinci . . . . .	44	Izoterm Plama, Indija / Izoterm Plama, Indjija. . . . .	83	Nelt, Dobanovci / Nelt, Dobanovci . . . . .	102
The Chedi Hotel, Luštica Bay / The Chedi Hotel, Lustica Bay . . . . .	10	Maxi, Smederevska Palanka / Maxi, Smederevska Palanka . . . . .	46	Tc Delta City, Podgorica / Tc Delta City, Podgorica . . . . .	84	Fiat Srbija, Kragujevac / Fiat Serbia, Kragujevac . . . . .	102
West 65, Novi Beograd / West 65, New Belgrade . . . . .	12	Dunkermotoren, Subotica / Dunkermotoren, Subotica . . . . .	48	Tc Delta City, Novi Beograd / Tc Delta City, New Belgrade . . . . .	86	Vode Vojvodine, Novi Sad / Vode Vojvodine, Novi Sad . . . . .	102
Belgrade Office Park, Novi Beograd / Belgrade Office Park, New Belgrade . . . . .	14	Muehlbauer, Stara Pazova / Muehlbauer, Stara Pazova . . . . .	50	Nis Petrol, Mali Požarevac / Nis Petrol, Mali Pozarevac . . . . .	87	Maxi, Kruševac / Maxi, Krusevac . . . . .	103
Shoppi, Borča / Shoppi, Borca . . . . .	16	Big Cee, Novi Sad / Big Cee, Novi Sad . . . . .	52	Nis Petrol, Šabac / Nis Petrol, Sabac . . . . .	88	Maxi, Pančevo / Maxi, Pancevo . . . . .	103
McDonald's, Borča / McDonald's, Borca. . . . .	18	Stambeno-Poslovni Objekat, Beograd / Business-Residential Building, Belgrade . . . . .	54	Nis Petrol, Bačka Topola / Nis Petrol, Backa Topola . . . . .	88	Maxi, Vršac / Maxi, Vrsac . . . . .	103
Stambeni Objekat, Beograd / Residential Building, Belgrade . . . . .	20	Src Bazen Prozivka, Subotica / Src Swimming Pool Prozivka, Subotica . . . . .	56	Nis Petrol, Smederevo / Nis Petrol, Smederevo . . . . .	89	Tempo C&C, Beograd / Tempo C&C, Belgrade . . . . .	104
Stambeni Objekat, Beograd / Residential Building, Belgrade . . . . .	22	Falke Serbia, Leskovac / Falke Serbia, Leskovac . . . . .	57	Nis Petrol, Loznica / Nis Petrol, Loznica. . . . .	89	Tempo C&C, Novi Sad / Tempo C&C, Novi Sad . . . . .	104
Hotel Toyoko Inn, Frankfurt / Hotel Toyoko Inn, Frankfurt . . . . .	23	Shinwon, Niš / Shinwon, Nis . . . . .	58	Maxi Supermarket, Podgorica / Maxi Supermarket, Podgorica . . . . .	90	Tempo C&C, Niš / Tempo C&C, Nis . . . . .	104
Vinarija Toplički Vinogradi, Prokuplje / Winery Toplicki Vinogradi, Prokuplje. . . . .	24	Metro C&C, Beograd / Metro C&C, Belgrade . . . . .	60	Roda C&C, Zemun / Roda C&C, Zemun . . . . .	91	Honda Auto centar, Novi Beograd / Honda Auto Center, New Belgrade . . . . .	105
Swarovski, Subotica / Swarovski, Subotica. . . . .	26	Yura Corporation, Leskovac / Yura Corporation, Leskovac . . . . .	62	Valy, Valjevo / Valy, Valjevo . . . . .	92	Voda Voda, Banja Vrujci / Voda Voda, Banja Vrujci . . . . .	105
Aktivhaus, Frankfurt / Aktivhaus, Frankfurt . . . . .	28	Norma Group, Subotica / Norma Group, Subotica . . . . .	64	Valy, Loznica / Valy, Loznica. . . . .	92	Tpc Blok 70, Beograd / Tpc Blok 70, Belgrade . . . . .	105
Streit Nova, Stara Pazova / Streit Nova, Stara Pazova . . . . .	29	Polimark, Beograd / Polimark, Belgrade . . . . .	66	Societe Generale, Beograd / Societe Generale, Belgrade. . . . .	93	<b>Projektovanje / Design</b> . . . . .	108
Vibac, Jagodina / Vibac, Jagodina . . . . .	30	Julia Mlin, Feketić / Julia Mill, Feketic . . . . .	68	Simplex, Temerin / Simplex, Temerin. . . . .	93	<b>Proizvodnja / Production</b> . . . . .	110
McDonald's, Novi Sad / McDonald's, Novi Sad . . . . .	31	Nacionalna Kuća Fudbala Fss, Stara Pazova / National House Of Football Fss, Stara Pazova . . . . .	70	<b>Krovni Svetlarnici I Kupole, Lamilux Ci Sistem / Daylight elements, Lamilux Ci system</b>		<b>Montaža / Installing</b> . . . . .	112
Mokrin House, Mokrin / Mokrin House, Mokrin . . . . .	32	Metro C&C, Subotica / Metro C&C, Subotica . . . . .	72	Krovne svetlosne kupole F100 / Roof light domes F100 . . . . .	96	<b>Reference / References</b> . . . . .	114
Sika, Šimanovci / Sika, Simanovci . . . . .	34	Oblasna Kontrola Leta, Aerodrom Nikola Tesla - Beograd / Area Flight Control, Airport Nikola Tesla - Belgrade . . . . .	73	Krovne svetlosne trake Rooflight B / Continuous Rooflight B . . . . .	97	<b>Naši partneri / Our partners</b> . . . . .	118
DIS, Vršac / DIS, Vrsac. . . . .	36	Mika Ps, Dobanovci / Mika Ps, Dobanovci . . . . .	74	Sistemi za odvođenje dima i toplote / Smoke and heat exhaust-ventilation systems . . . . .	98		
Grindex, Kikinda / Grindex, Kikinda . . . . .	37	Kika, Beograd / Kika, Beograd . . . . .	75	CI SYSTEM PR60 - Arhitektura stakla / CI SYSTEM PR60 - Architecture of glass . . . . .	99		
Mikroelektronika, Zemun / Mikroelektronika, Zemun . . . . .	38	Banini, Kikinda / Banini, Kikinda . . . . .	76				
Netiks, Beograd / Netiks, Belgrade . . . . .	40	Mr. Bricolage, Niš / Mr. Bricolage, Nis . . . . .	78				
		BMW Auto centar, Beograd / BMW Auto Center, Belgrade . . . . .	80				
		Tempo C&C, Čačak / Tempo C&C, Cacak . . . . .	81				





**O NAMA**

**ABOUT US**

Mi smo **ARMONT SP.**

Mi pravimo lica zgrada.

To činimo tako što projektujemo, proizvodimo i montiramo fasadne obloge različitih tipova, za objekte poput onih koje ćete videti u ovom katalogu.

Posedujemo više od 10 godina iskustva u ovom poslu, radimo i poslujemo unapređujući svoja znanja i veštine. Brojni uspešni projekti u zemlji i inostranstvu učinili su da naša kompanija postane sinonim za inovativna i efikasna rešenja u oblasti inženjeringa i montaže aluminijumskih, staklenih i čeličnih konstrukcija.

Veliki broj stambenih i poslovnih zgrada, trgovinski, industrijski i sportski centri nose potpis naših projektanata, arhitekata i montera. Kvalitet, efikasnost, sigurnost i odgovornost su četiri ključne reči naše poslovne filozofije. Time odavno, stalno i iznova zaslužujemo dugoročno poverenje naših klijenata.

Reputaciju štitimo novim uspesima i ambicioznim projektima, ulaganjem u najsavremeniju tehnologiju i nova znanja. Pouzdan smo partner u svim projektima, i velikim i malim. Uz stalnu saradnju sa klijentom stvaramo moderna, kreativna i funkcionalna rešenja.

Pratimo svetske trendove i neprekidno usavršavamo znanja i tehnike za izradu i postavljanje aluminijumskih, staklenih i ventilisanih fasada (Trespa, Fundermax, Eternit, Alucobond, Alubond), ALU stolarije i drugih pratećih elemenata. Mi uvek učimo da bi bolje radili i radimo da bi stalno napredovali.

U svim fazama projekta, od projektovanja do montaže, naš dugogodišnji i stabilni tim iskusnih i posvećenih profesionalaca stoji vam na raspolaganju. Mi verujemo da svi uspešni projekti nastaju sa najvažnijim razlogom – zbog pouzdanih partnera koji međusobno dele iste vrednosti! Ostajući verni našem poslovnom kodeksu, sa optimizmom gledamo u buduće projekte. I radujemo se svakom novom njihovom početku.

**Gradeći zajedno lica zgrada – gradimo i naš zajednički uspeh!**

Uvek ste dobro došli.

ARMONT SP

We are **ARMONT SP.**

We create faces of buildings.

We designing, produce and install facade claddings of different types, for objects like those you will see in this catalog.

More than 10 years of experience in this business, we choose to work and do business by improving our knowledge and skills. Numerous successful projects in the country and abroad have made our company a synonym for innovative and efficient solutions in the field of engineering and assembly of aluminum, glass and steel constructions.

A large number of residential and office buildings, commercial, industrial and sports centers are signed by our designers, architects and installers. Quality, efficiency, safety and accountability are the four key words of our business philosophy. Over the years, we constantly and repeatedly deserve our clients' long-term trust.

We protect our reputation with new successes and ambitious projects, investing in state-of-the-art technology and new knowledge. We are a reliable partner in all projects, both big and small. With constant cooperation with the client, we create modern, creative and functional solutions.

We follow the global trends and continuously improve the knowledge and techniques for the design and installation of aluminum, glass and ventilated façades (Trespa, Fundermax, Eternit, Alucobond, Alubond), ALU carpentry and other supporting elements. We always learn to work better and to keep on progressing.

At all stages of the project, from design to assembly, our long-standing and stable team of experienced and dedicated professionals stands at your disposal. We believe that all successful projects come with the most important reason - because of trusted partners who share the same value with each other! Staying true to our business code, we are optimistic about future projects. And we look forward to every new beginning.

**Building together faces of buildings - we are building our mutual success!**

You are always welcome.

ARMONT SP





**PROJEKTI**

**PROJECTS**

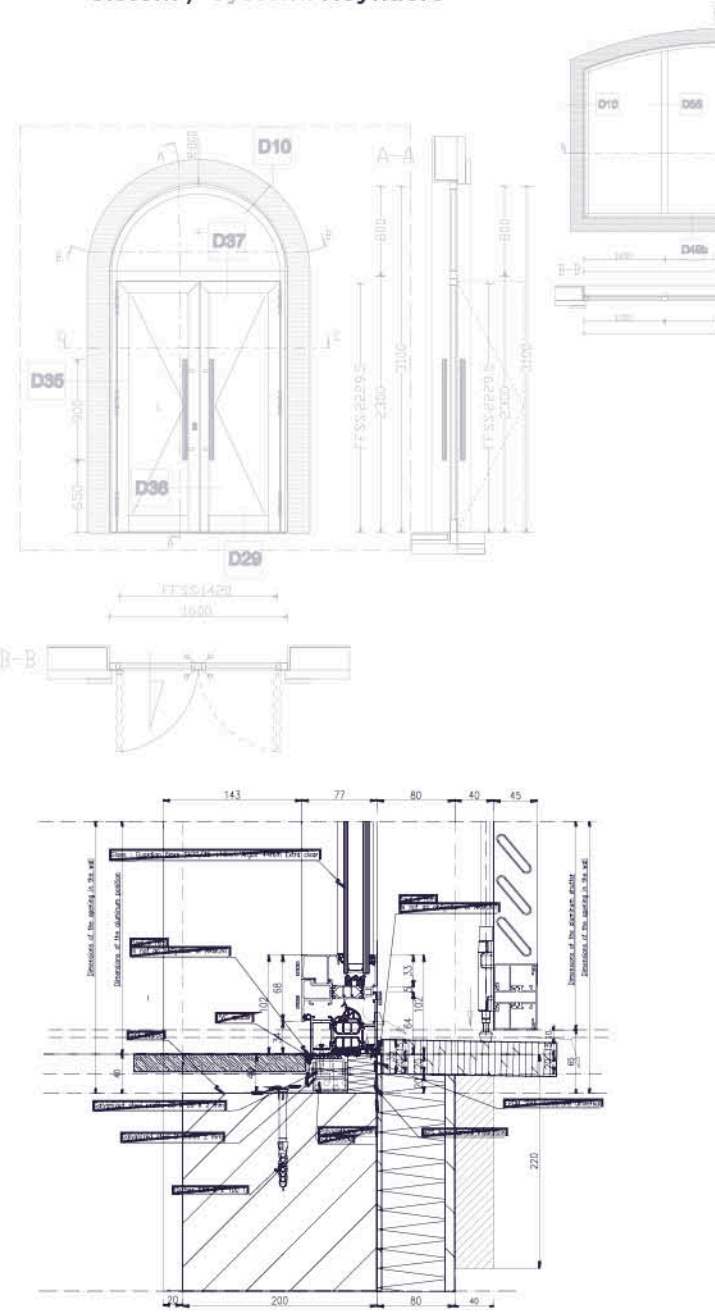






Godina izgradnje / Year of build: 2017/2018  
Investitor / Investor: BESIX  
Projektovao / Design: Mašinoprojekt Kopriv, Beograd

Sistem / System: Reynaers

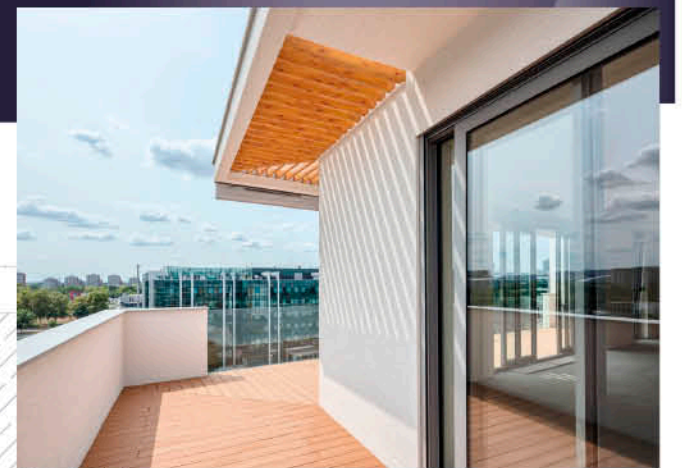
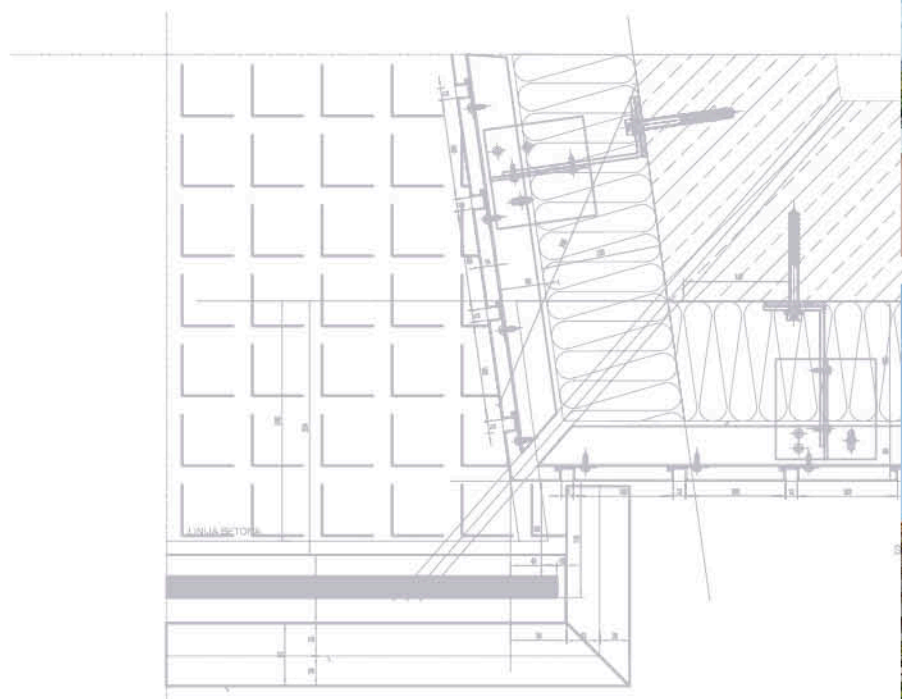






Godina izgradnje / Year of build: 2017/2018  
Investitor / Investor: PFB Properties  
Projektovao / Design: PFB Design

Sistem / System: Reynaers

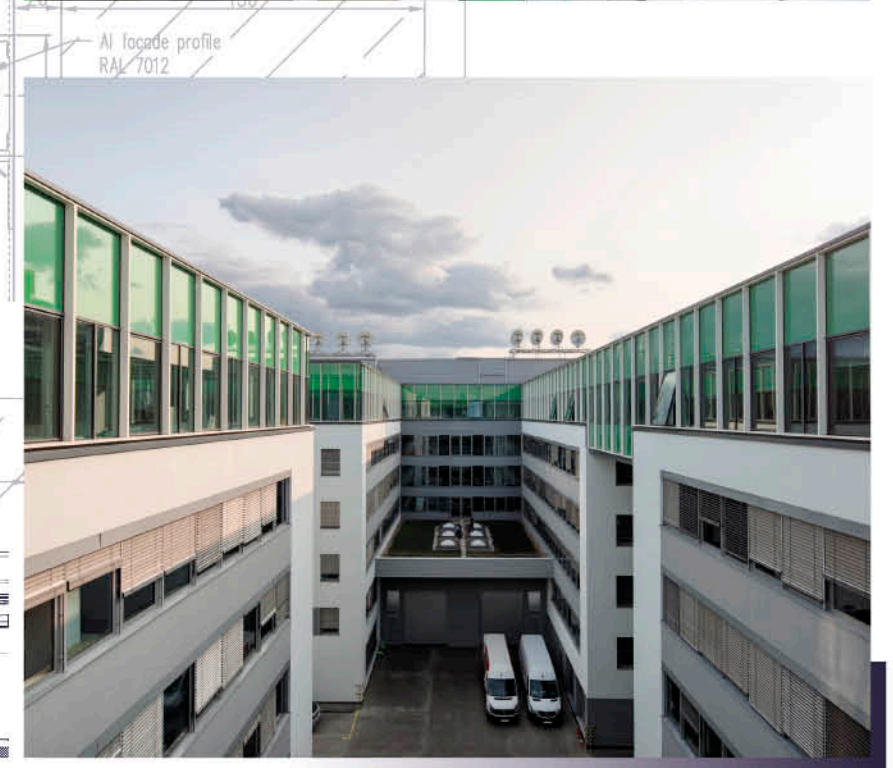
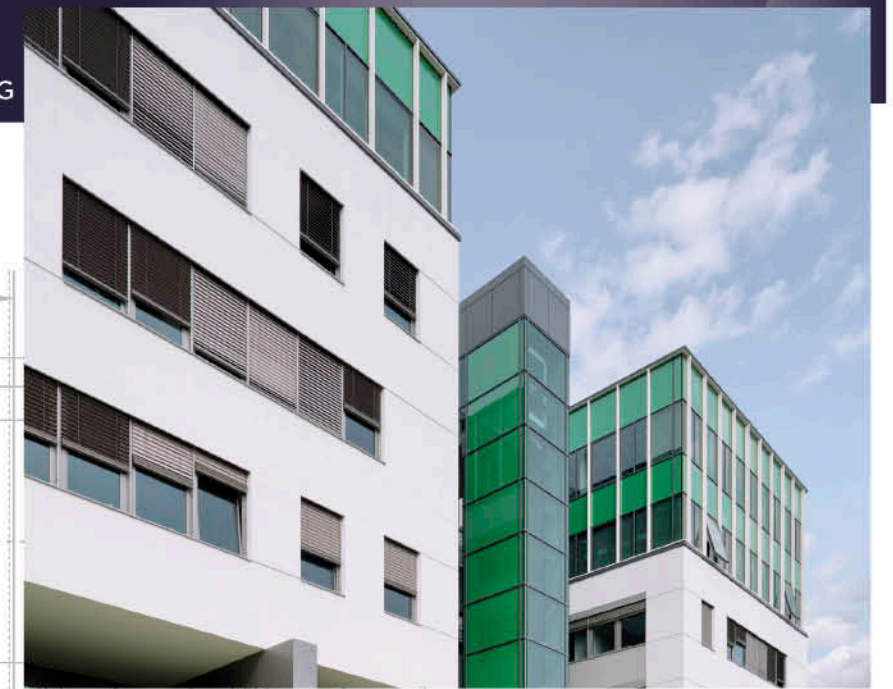
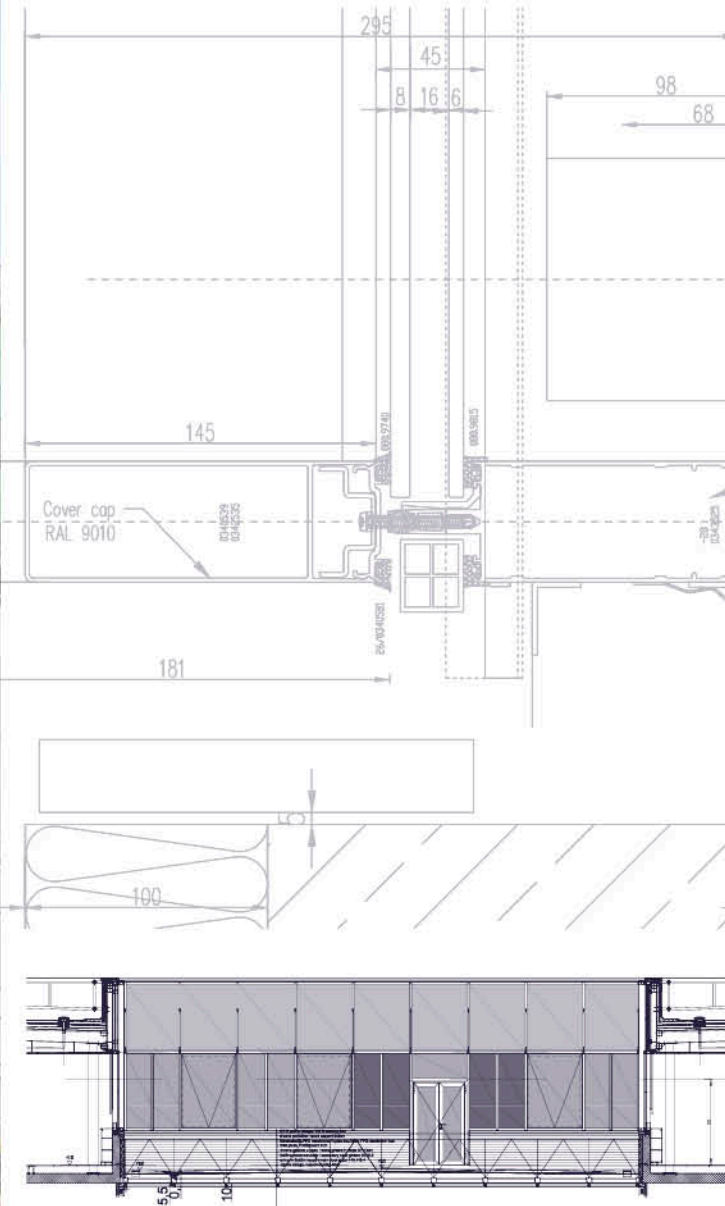






Godina izgradnje / Year of build: 2017  
Investitor / Investor: CA IMMO  
Projektovao / Design: Spasoje Derajić, d.i.g./BEGING

Fasada / Facade: 6.000 m<sup>2</sup>  
Sistem / System: Reynaers



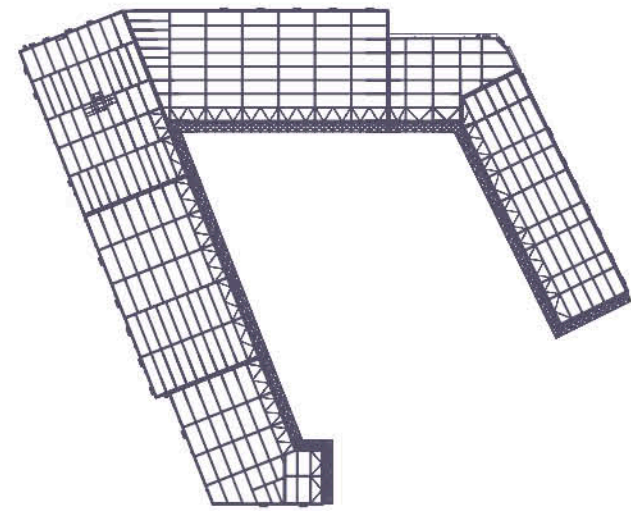
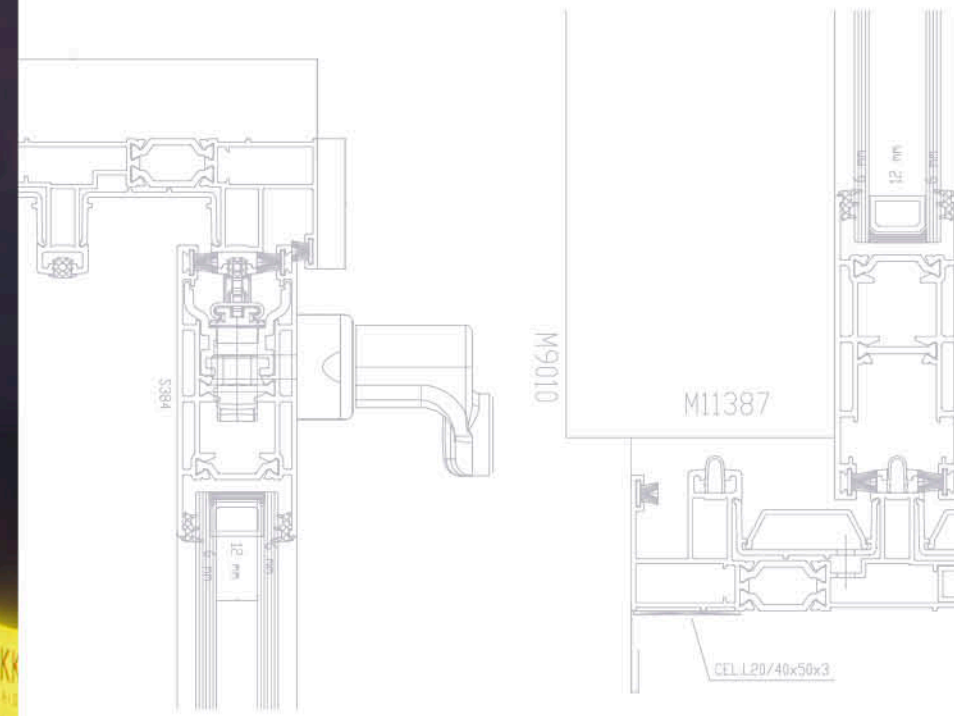
Al facade profile  
RAL 7012





Godina izgradnje / Year of build: 2016  
Investitor / Investor: MPC Properties  
Projektovao / Design: GeoEXPERT

Fasada / Facade: 8.700 m<sup>2</sup>  
Krov / Roof: 15.000 m<sup>2</sup>

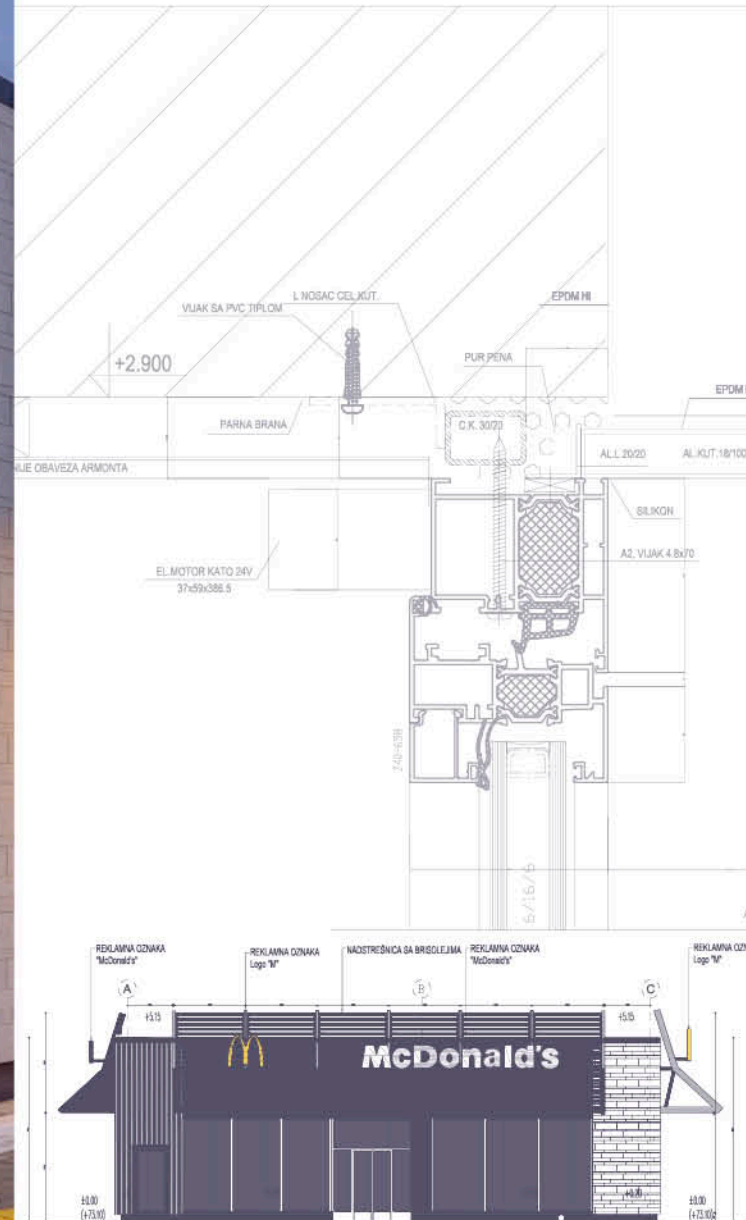






Godina izgradnje / Year of build: 2016  
 Investitor / Investor: MPC Properties  
 Projektovao / Design: D.A. Dizajnarhitektura

Sistem / System: Schüco

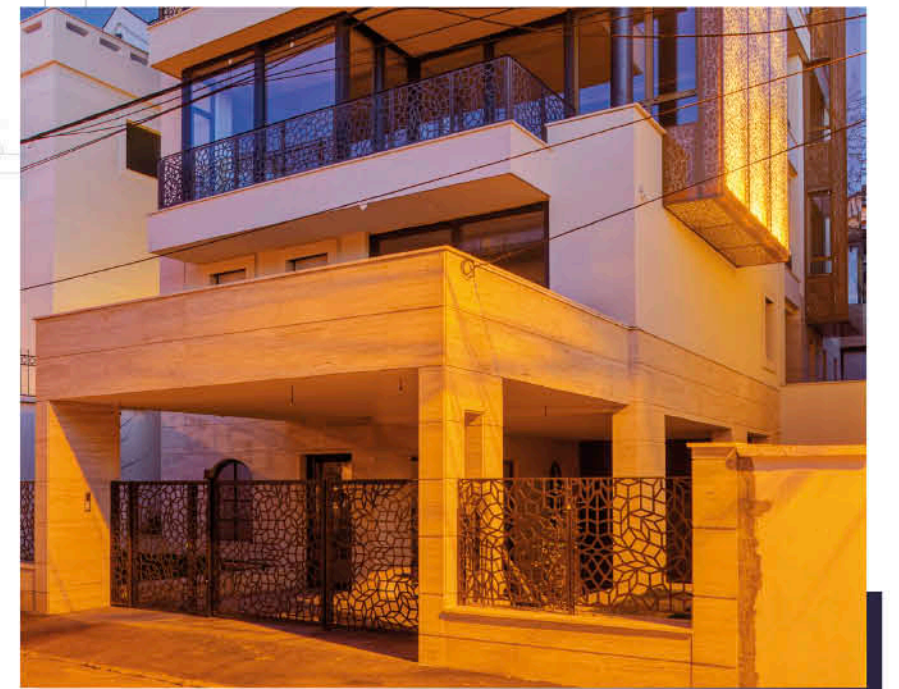
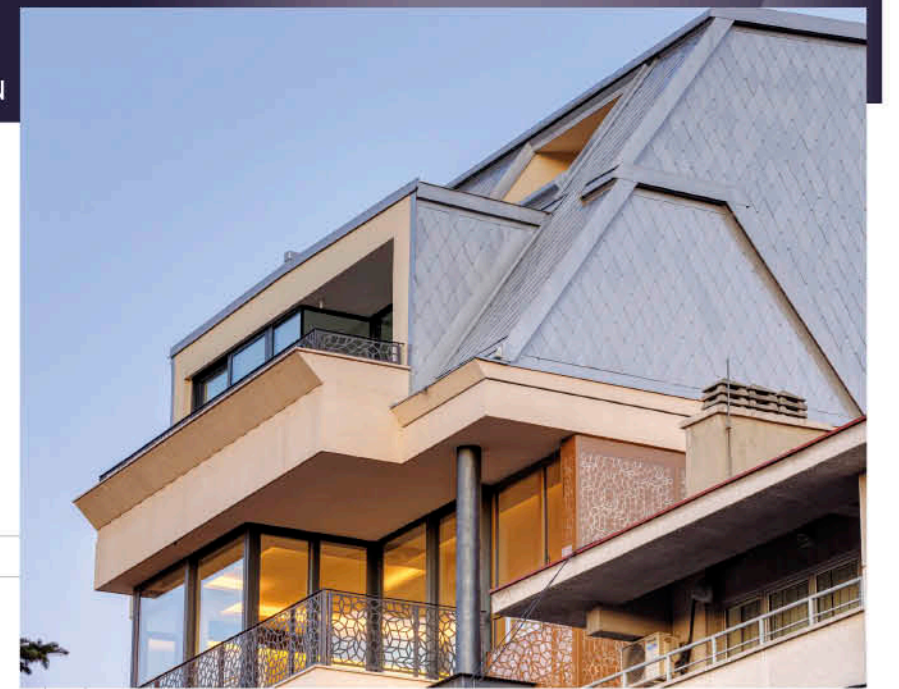
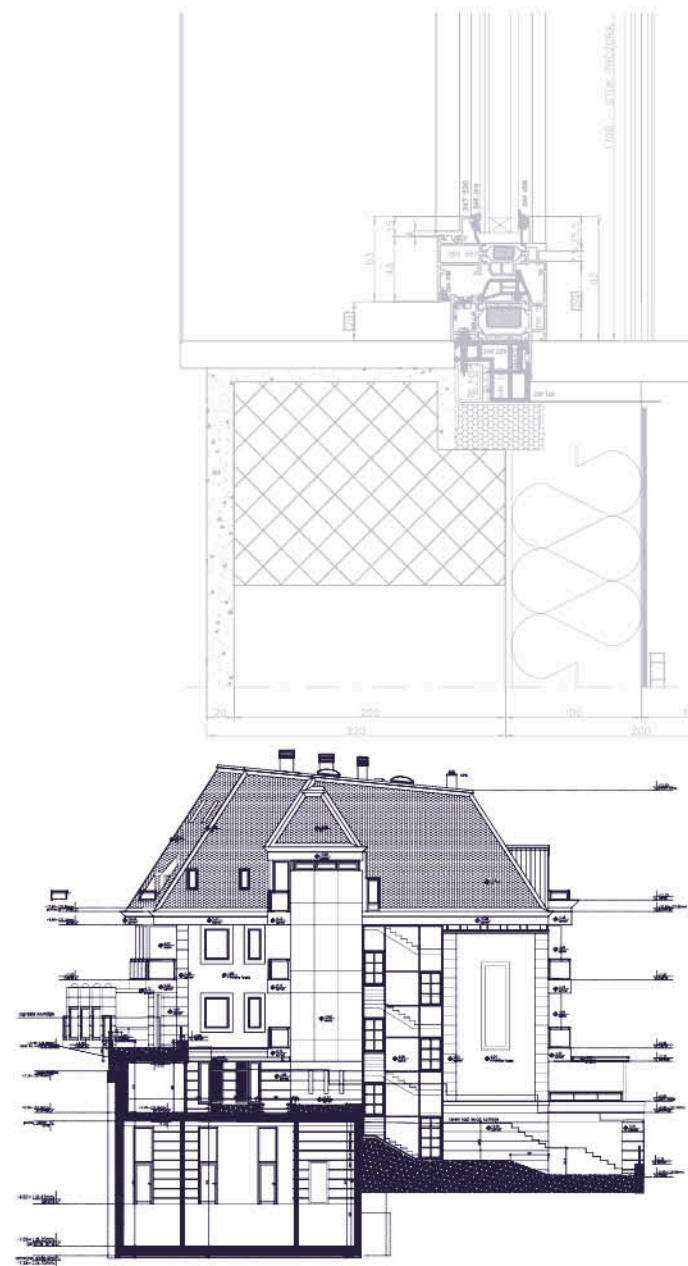






Godina izgradnje / Year of build: 2016  
Investitor / Investor: Privatni  
Projektovao / Design: Vanja Cerović, d.i.a. / GEDEON

Sistem / System: Schüco



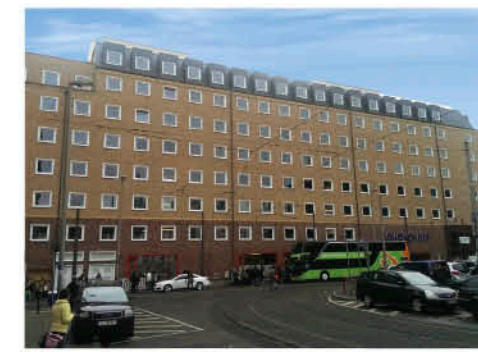
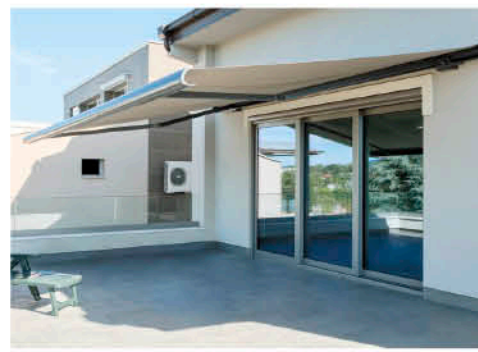




Godina izgradnje / Year of build: 2016  
Investitor / Investor: Privatni  
Sistem / System: Schüco



Godina izgradnje / Year of build: 2016  
Investitor / Investor: Toyoko  
Sistem / System: Schüco

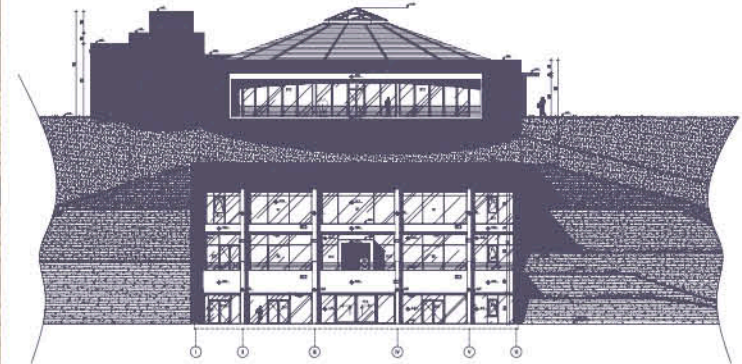
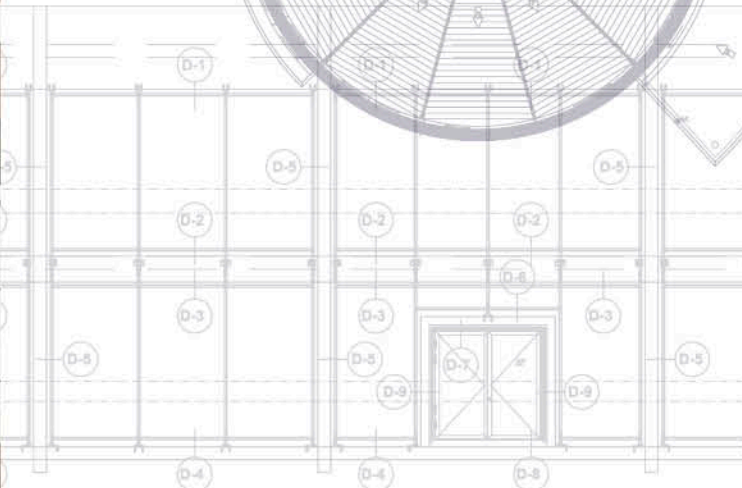
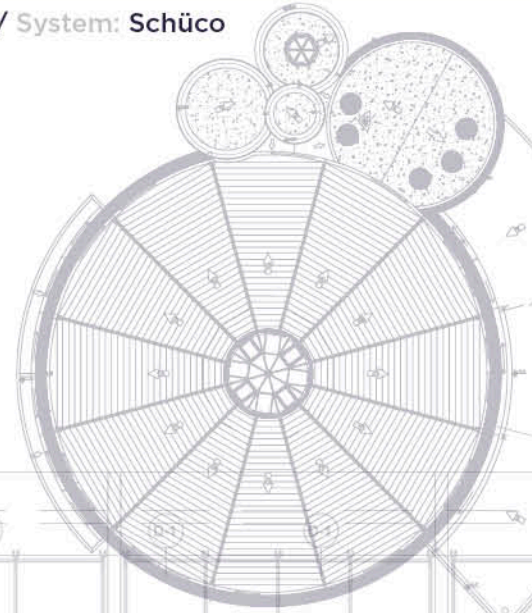






Godina izgradnje / Year of build: 2015  
Investitor / Investor: Toplički vinogradi  
Projektovao / Design: Dejan Stanojević, d.i.a./ DAAM

Sistem / System: Schüco

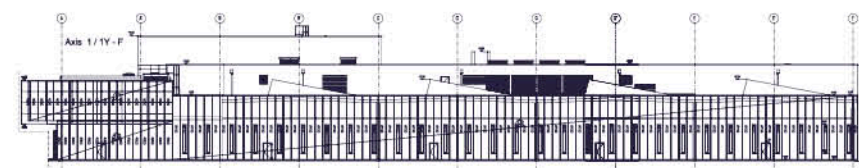
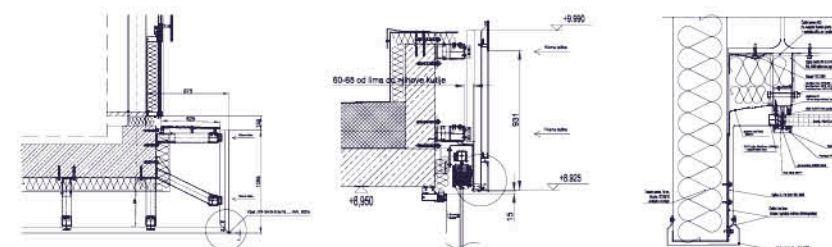
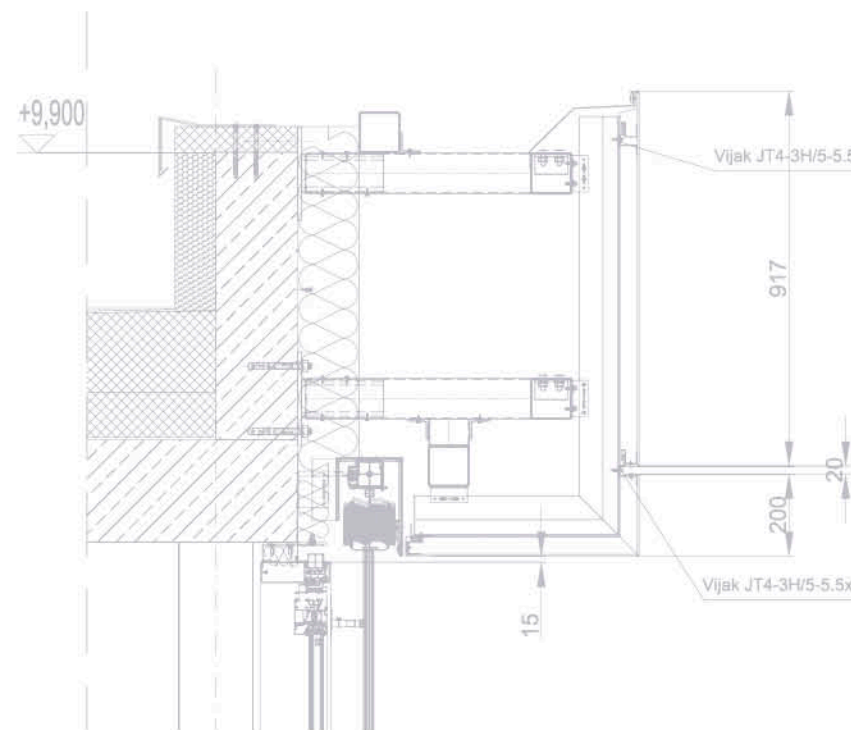




# SWAROVSKI

Godina izgradnje / Year of build: 2015  
Investitor / Investor: Swarovski  
Projektovao / Design: APM Austria

Fasada / Facade: 5.500 m<sup>2</sup>  
Krov / Roof: 12.000 m<sup>2</sup>  
Sistem / System: Schüco; Titan-Zinc







Godina izgradnje / **Year of build:** 2015  
Investitor / **Investor:** Glas Wagener



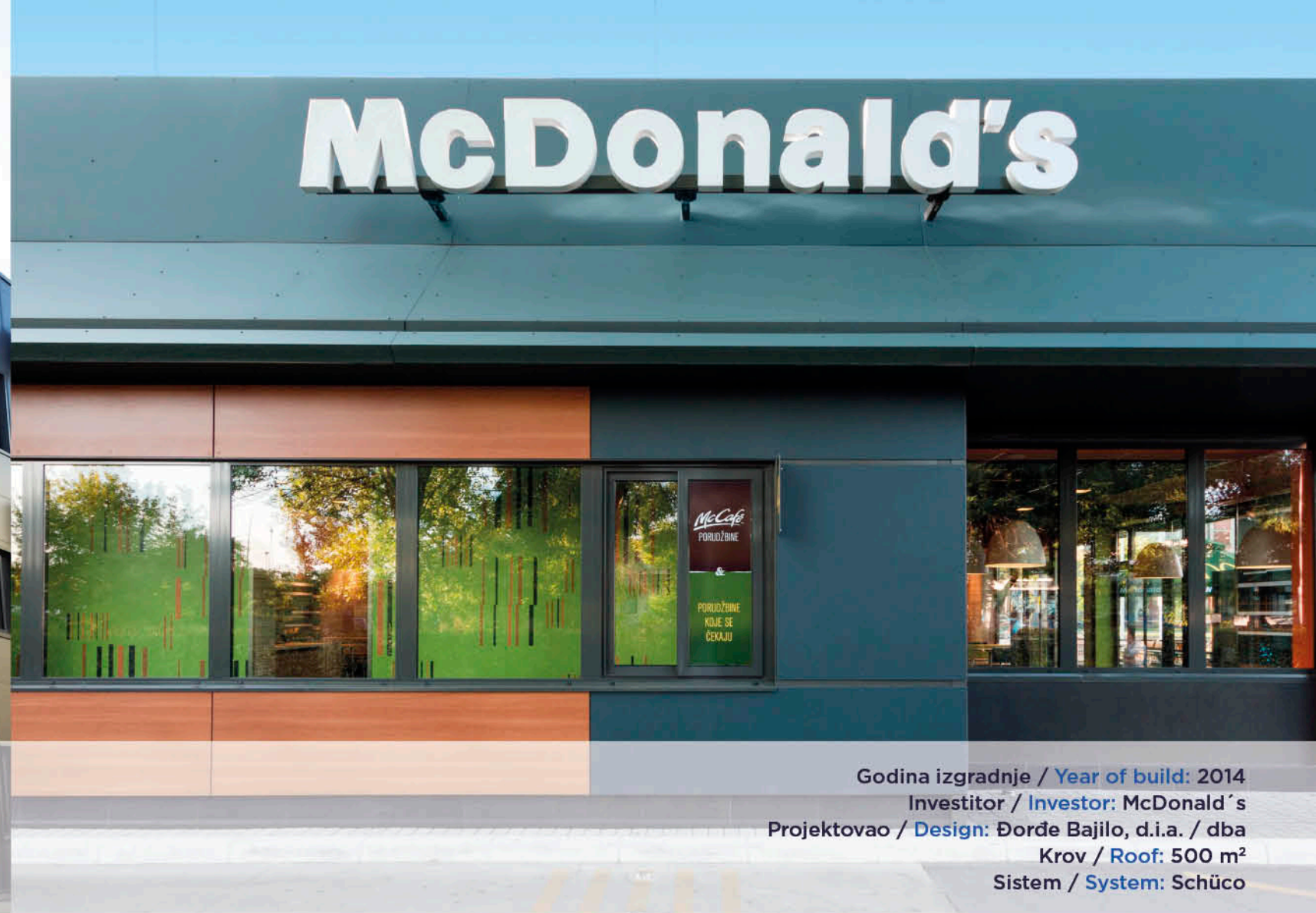
Godina izgradnje / **Year of build:** 2015  
Investitor / **Investor:** Streit Nova  
Projektovao / **Design:** North Engineering, Subotica  
Fasada / **Facade:** 4.700 m<sup>2</sup>  
Krov / **Roof:** 12.400 m<sup>2</sup>



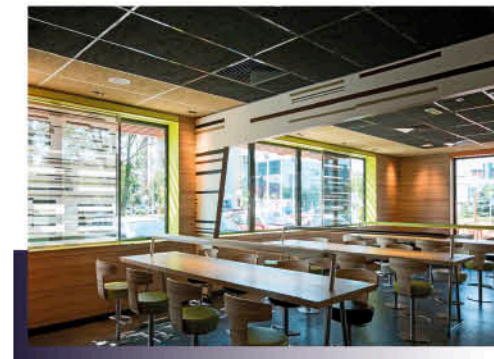




Godina izgradnje / **Year of build:** 2015  
Investitor / **Investor:** Vibac  
Projektovao / **Design:** Mašinoprojekt Kopriv, Beograd  
Fasada / **Facade:** 51.000  
Krov / **Roof:** 65.000



Godina izgradnje / **Year of build:** 2014  
Investitor / **Investor:** McDonald's  
Projektovao / **Design:** Đorđe Bajilo, d.i.a. / dba  
Krov / **Roof:** 500 m<sup>2</sup>  
Sistem / **System:** Schüco

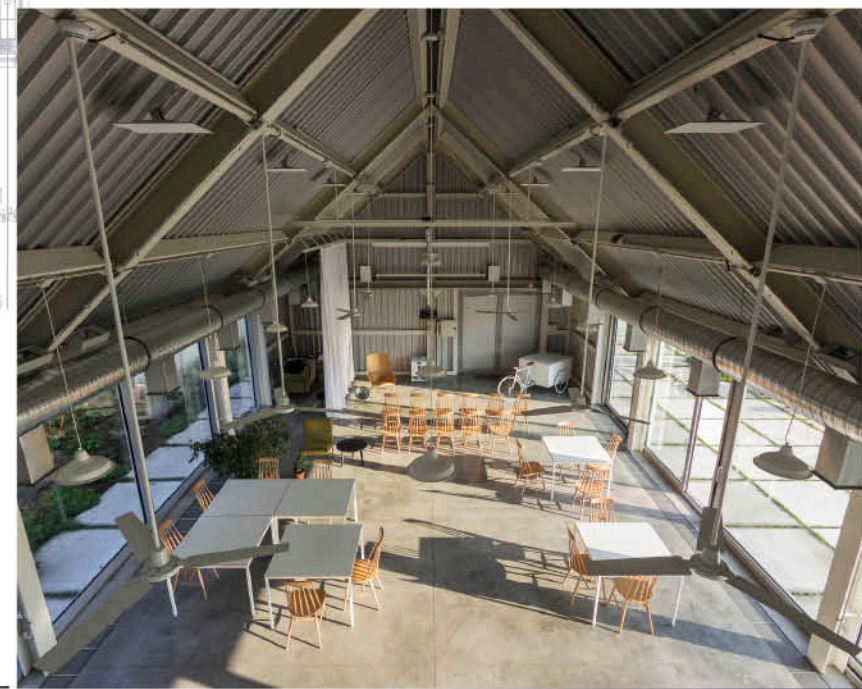
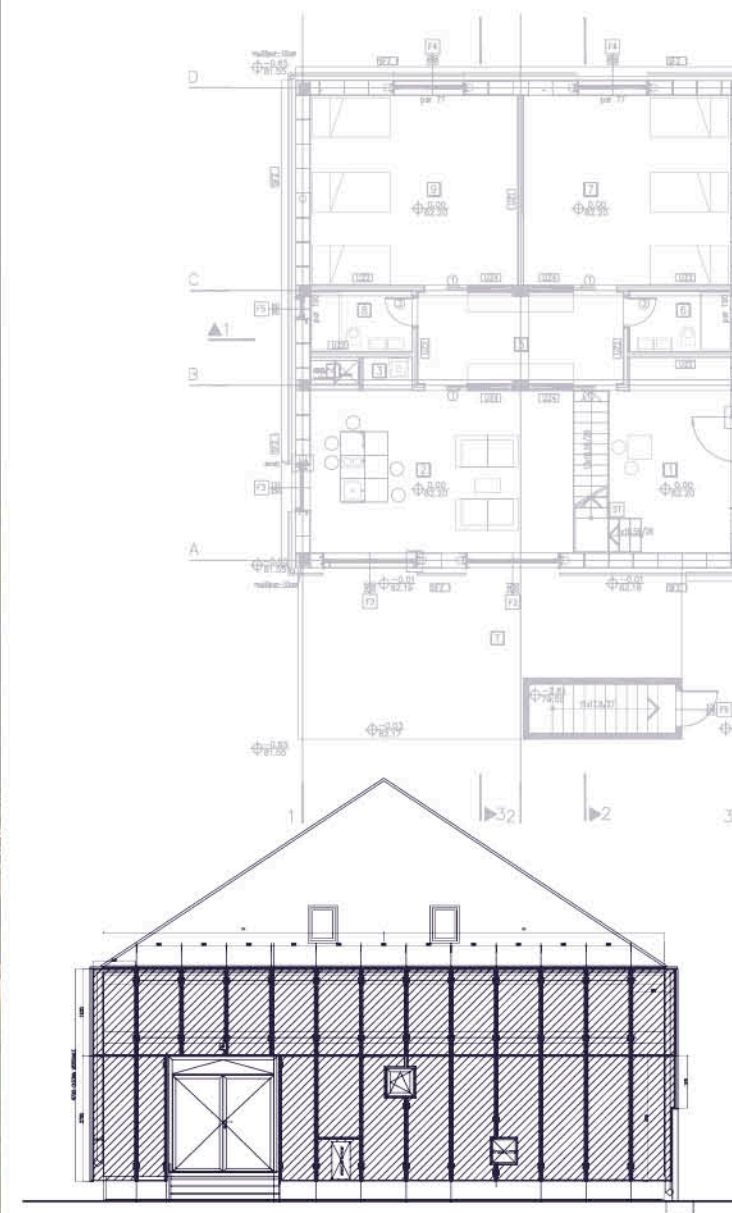






Godina izgradnje / Year of build: 2014  
Investitor / Investor: Terra Panonica  
Projektovao / Design: Projektni biro AUTORI

Fasada / Facade: 900 m<sup>2</sup>  
Krov / Roof: 600 m<sup>2</sup>  
Sistem / System: Schüco

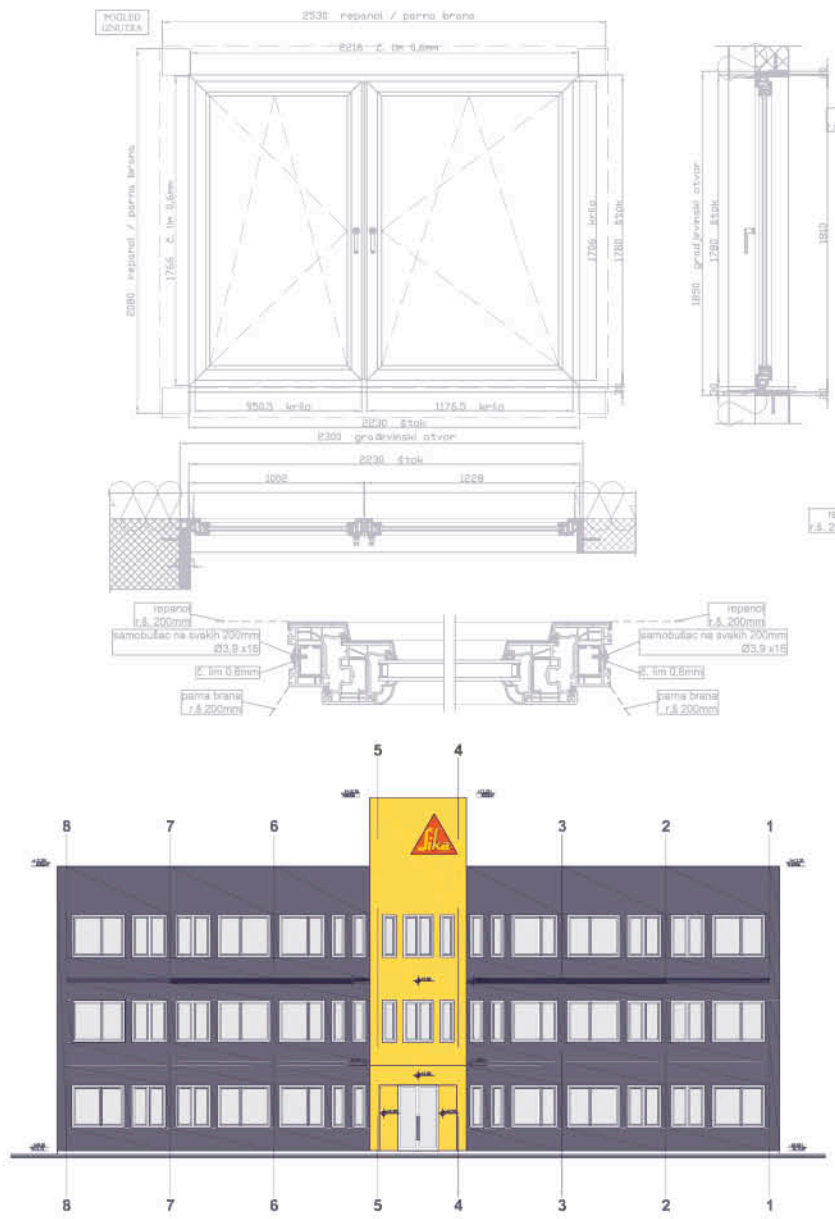




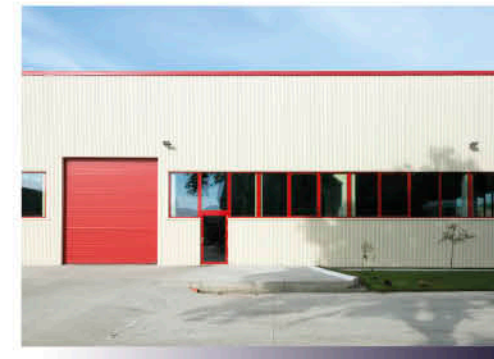


Godina izgradnje / Year of build: 2014  
Investitor / Investor: SIKA Srbija  
Projektovao / Design: North Engineering, Subotica

Fasada / Facade: 4.500 m<sup>2</sup>  
Krov / Roof: 3.000 m<sup>2</sup>  
Sistem / System: Schüco





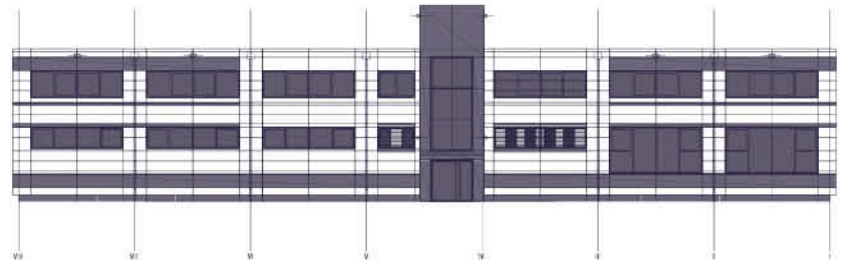
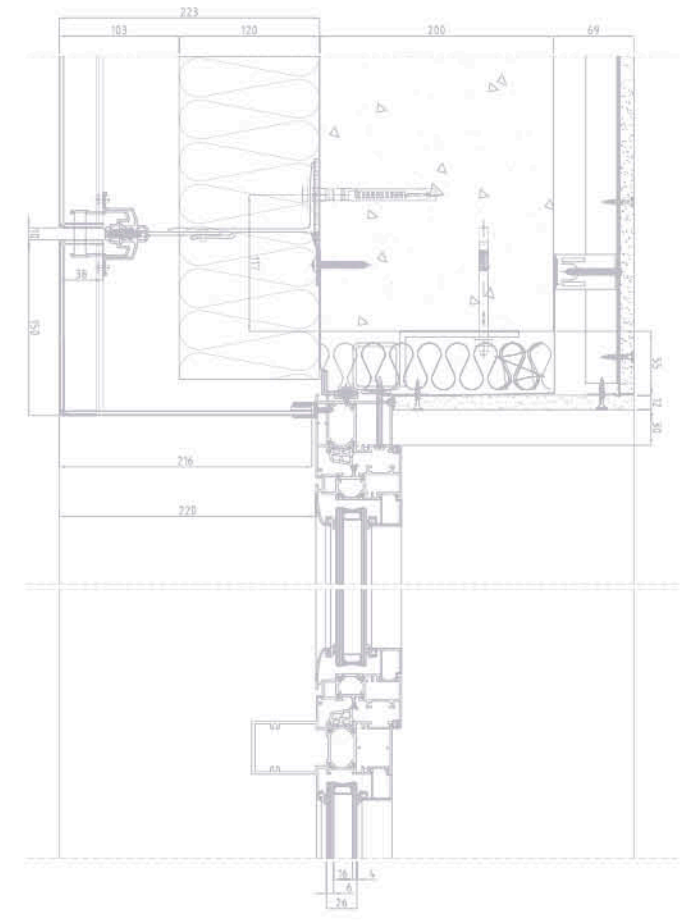






Godina izgradnje / Year of build: 2013  
Investitor / Investor: Mikroelektronika  
Projektovao / Design: Branka Kokotović Stančić, d.i.a.

Fasada / Facade: 1.770 m<sup>2</sup>  
Krov / Roof: 1.960 m<sup>2</sup>  
Sistem / System: Alubond

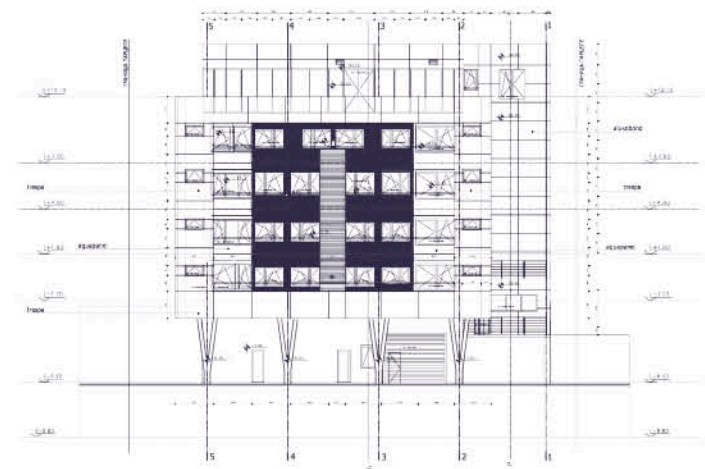
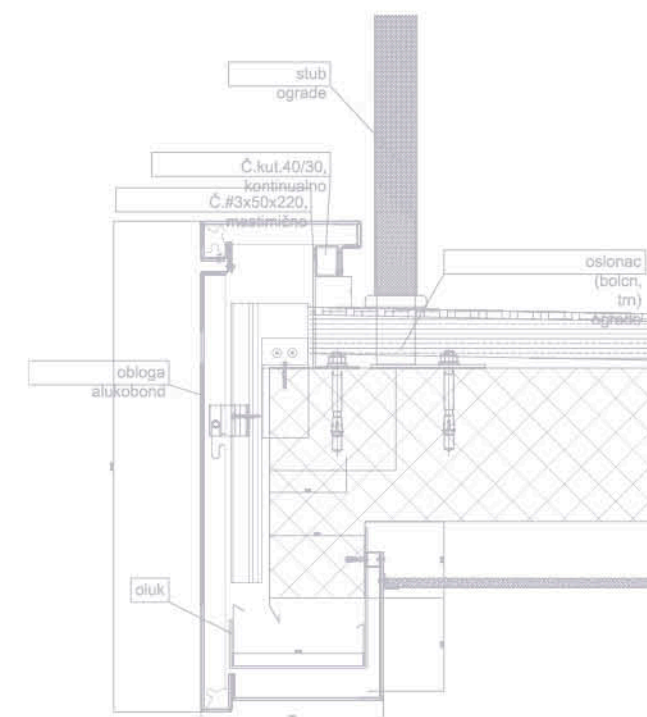






Godina izgradnje / Year of build: 2013  
Investitor / Investor: NETIX, Beograd  
Projektovao / Design: Dejan Radonjić, d.i.a.

Fasada / Facade: 3.500 m<sup>2</sup>  
Krov / Roof: 1.500 m<sup>2</sup>  
Sistem / System: Schüco; Alubond

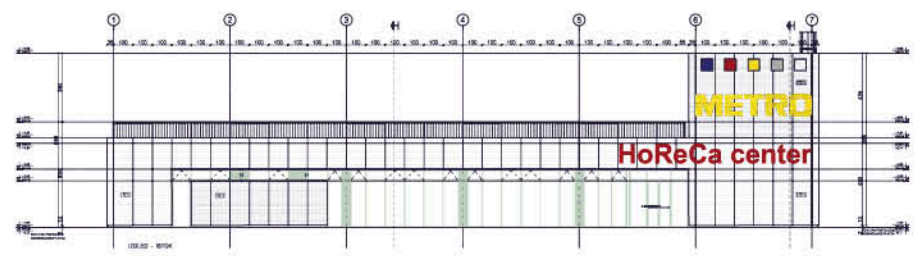
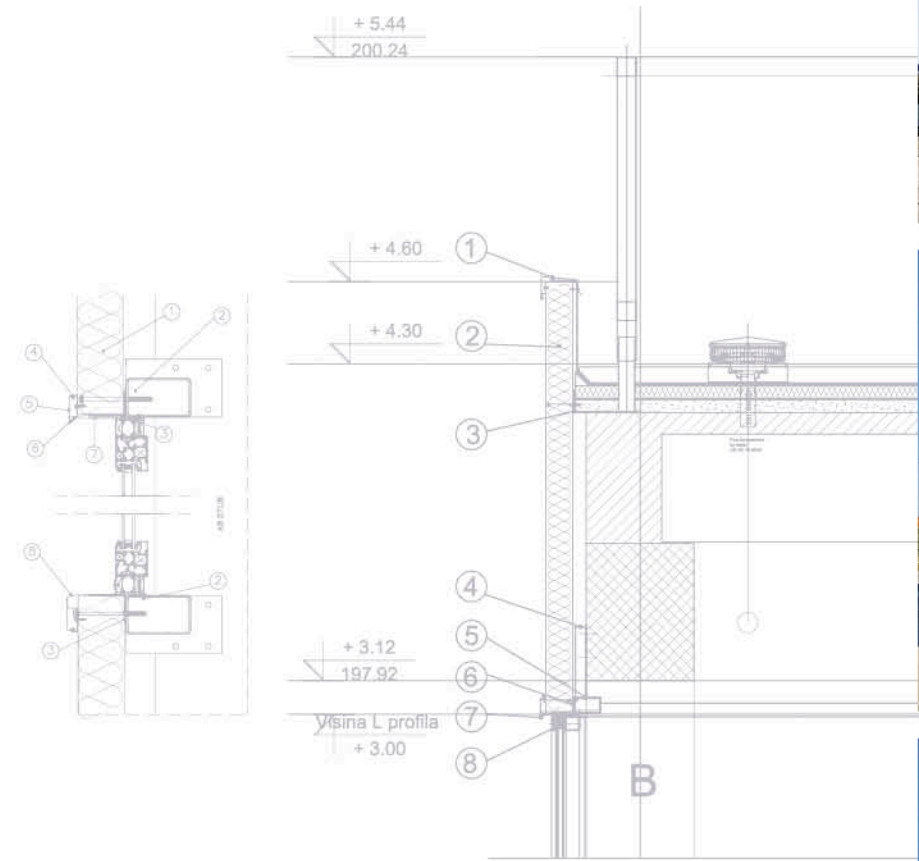






Godina izgradnje / Year of build: 2013  
Investitor / Investor: METRO C&C  
Projektovao / Design: North Engineering, Subotica

Fasada / Facade: 480 m<sup>2</sup>  
Krov / Roof: 410 m<sup>2</sup>

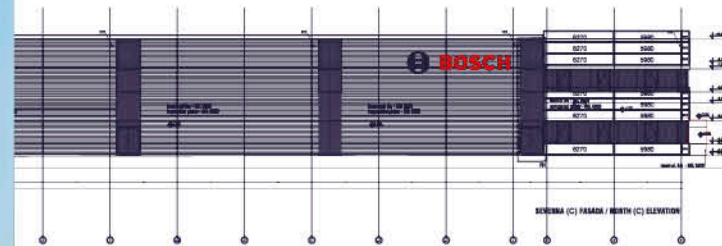
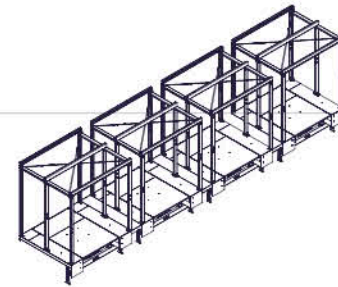
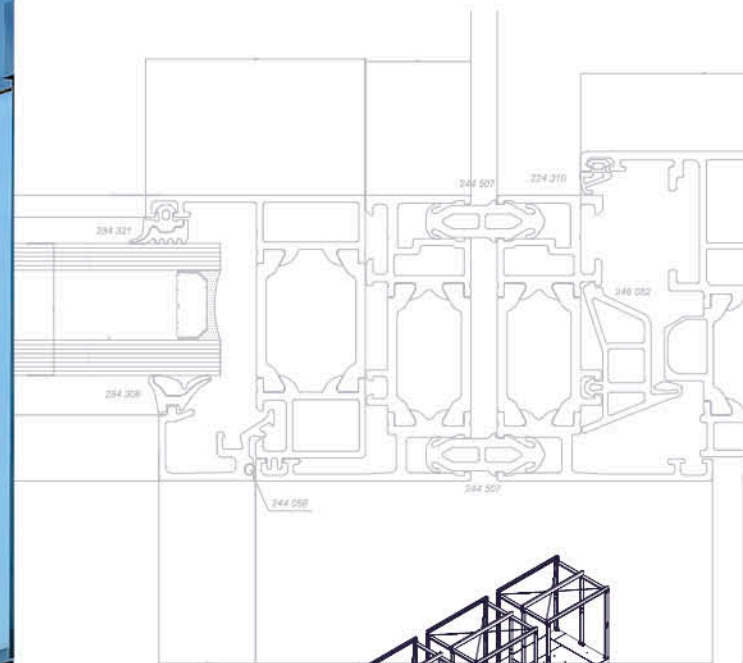






Godina izgradnje / Year of build: 2012/2013  
Investitor / Investor: ROBERT BOSCH  
Projektovao / Design: Mašinoprojekt Kopriv, Beograd

Fasada / Facade: 7.000 m<sup>2</sup>  
Krov / Roof: 17.000 m<sup>2</sup>  
Sistem / System: Schüco

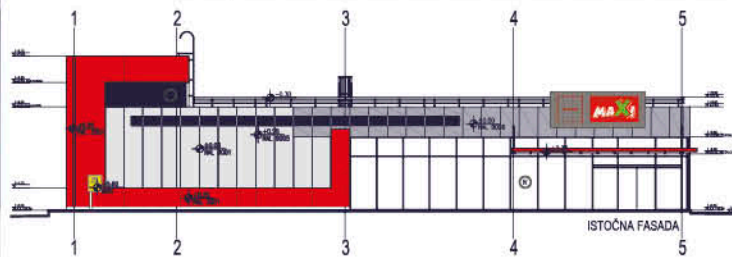
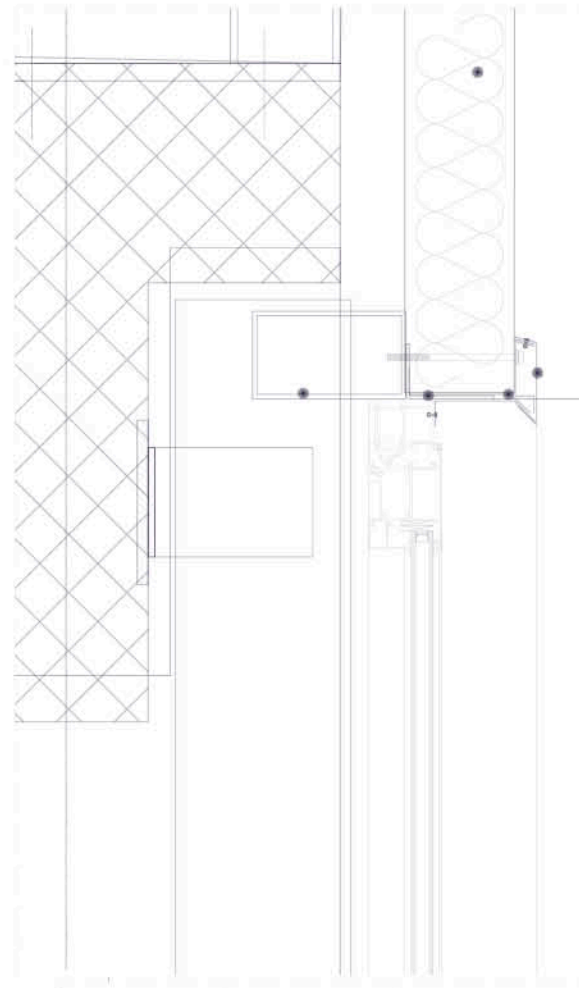






Godina izgradnje / Year of build: 2012  
Investitor / Investor: Delhaize  
Projektovao / Design: North Engineering, Subotica

Fasada / Facade: 900 m<sup>2</sup>  
Krov / Roof: 850 m<sup>2</sup>

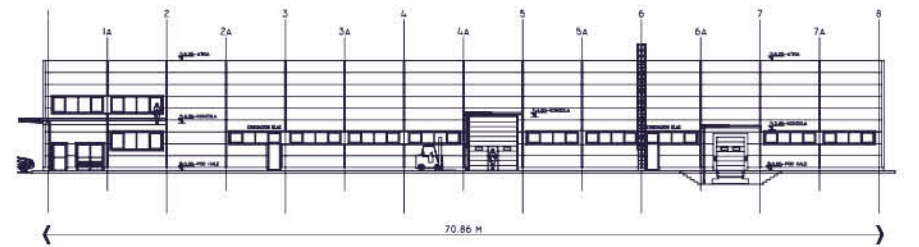
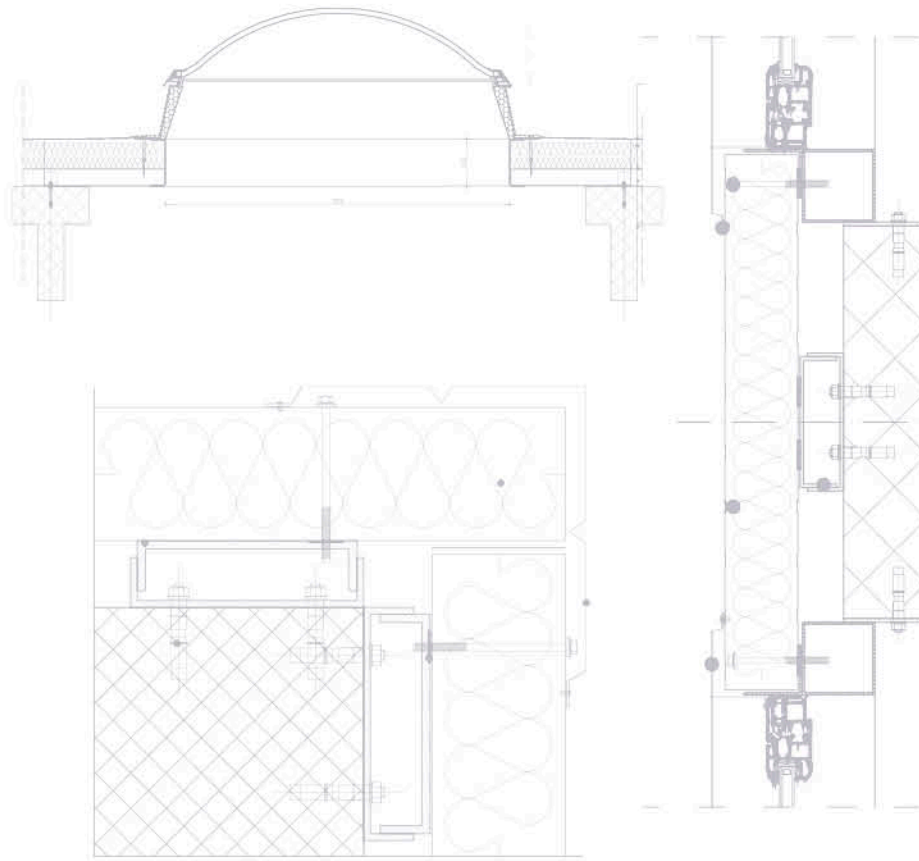






Godina izgradnje / Year of build: 2012  
Investitor / Investor: Dunkermotoren  
Projektovao / Design: Support, Subotica

Fasada / Facade: 2.200 m<sup>2</sup>  
Krov / Roof: 4.300 m<sup>2</sup>

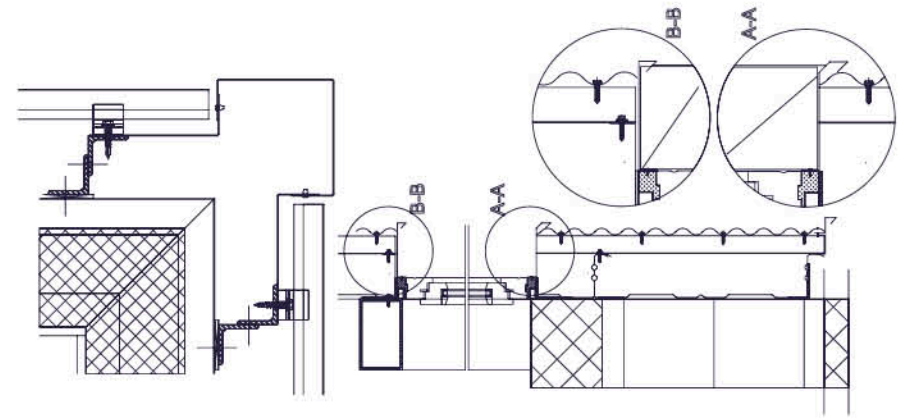
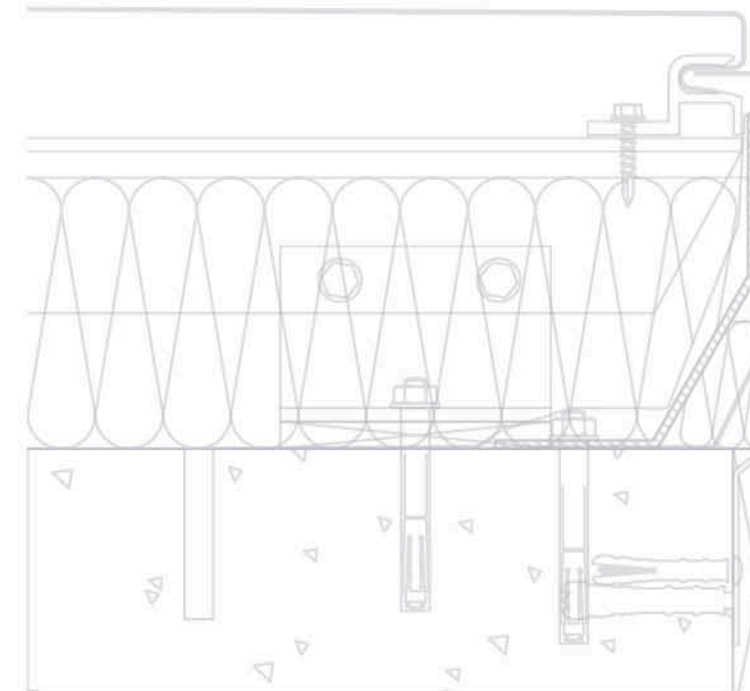






Godina izgradnje / Year of build: 2012  
Investitor / Investor: Muehlbauer  
Projektovao / Design: Studio Struktura

Fasada / Facade: 1.300 m<sup>2</sup>  
Krov / Roof: 4.100 m<sup>2</sup>  
Sistem / System: Hunter Douglas

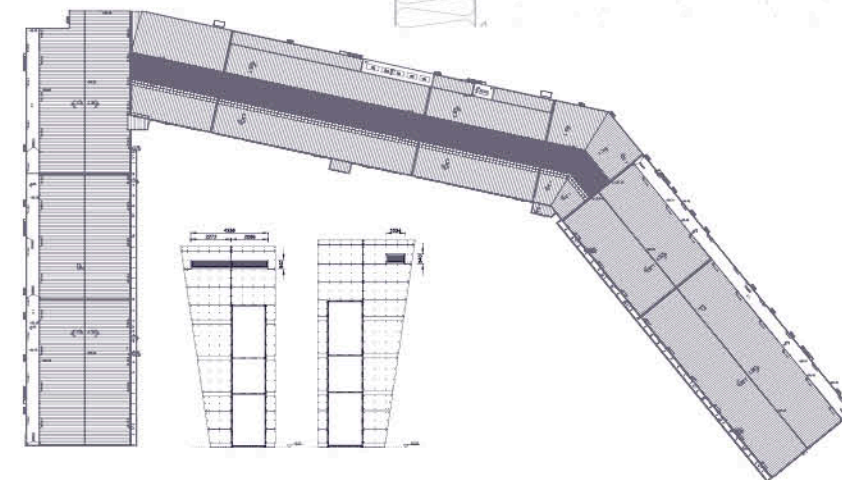
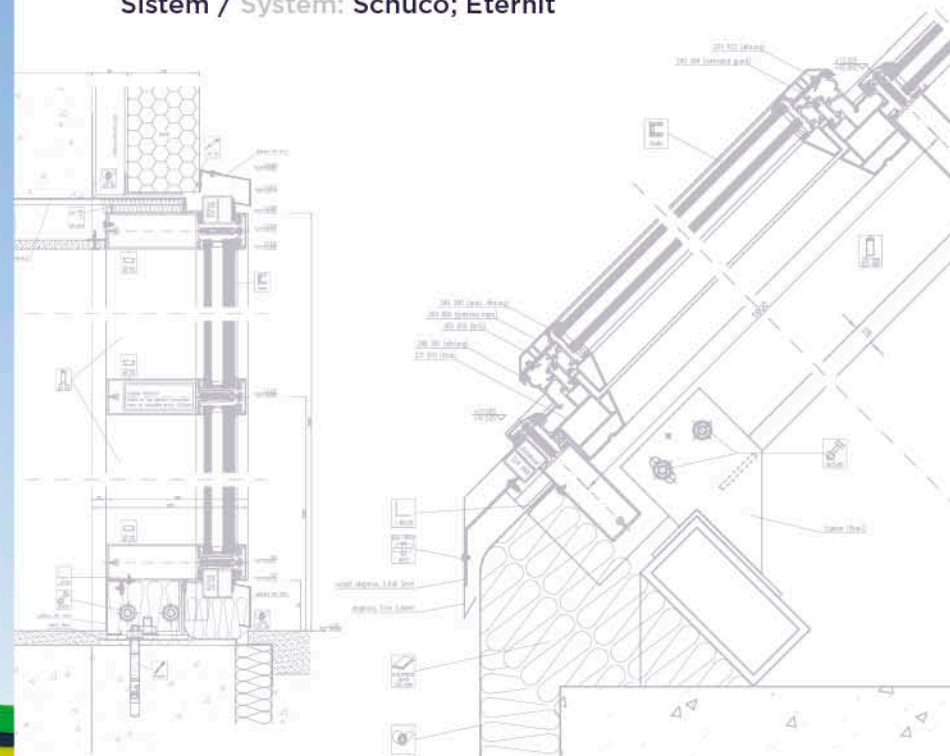






Godina izgradnje / Year of build: 2012  
Investitor / Investor: Big Cee  
Projektovao / Design: D.A. Dizajnarhitektura

Fasada / Facade: 6.500 m<sup>2</sup>  
Krov / Roof: 30.400 m<sup>2</sup>  
Sistem / System: Schüco; Eternit

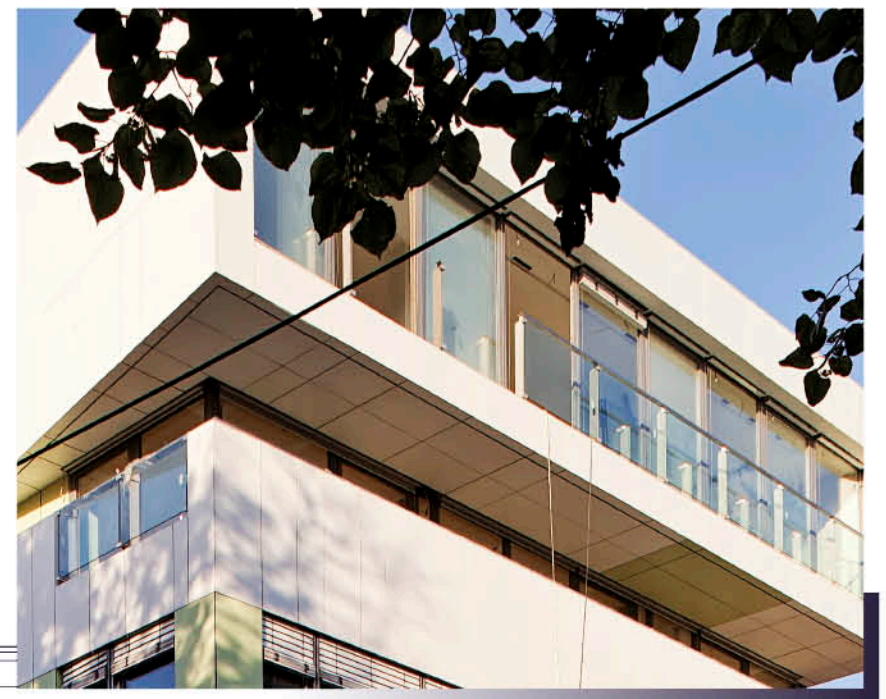
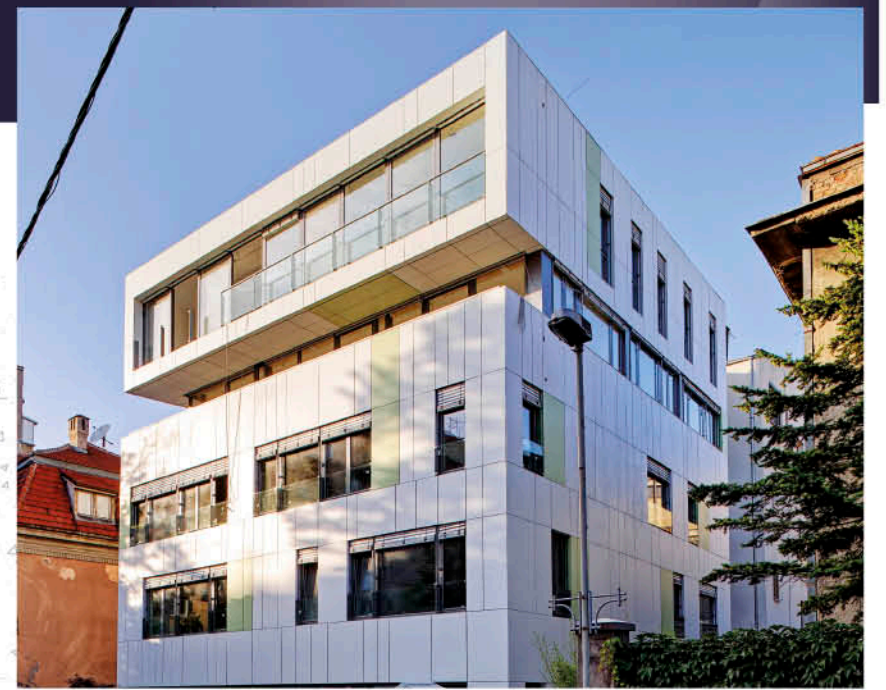
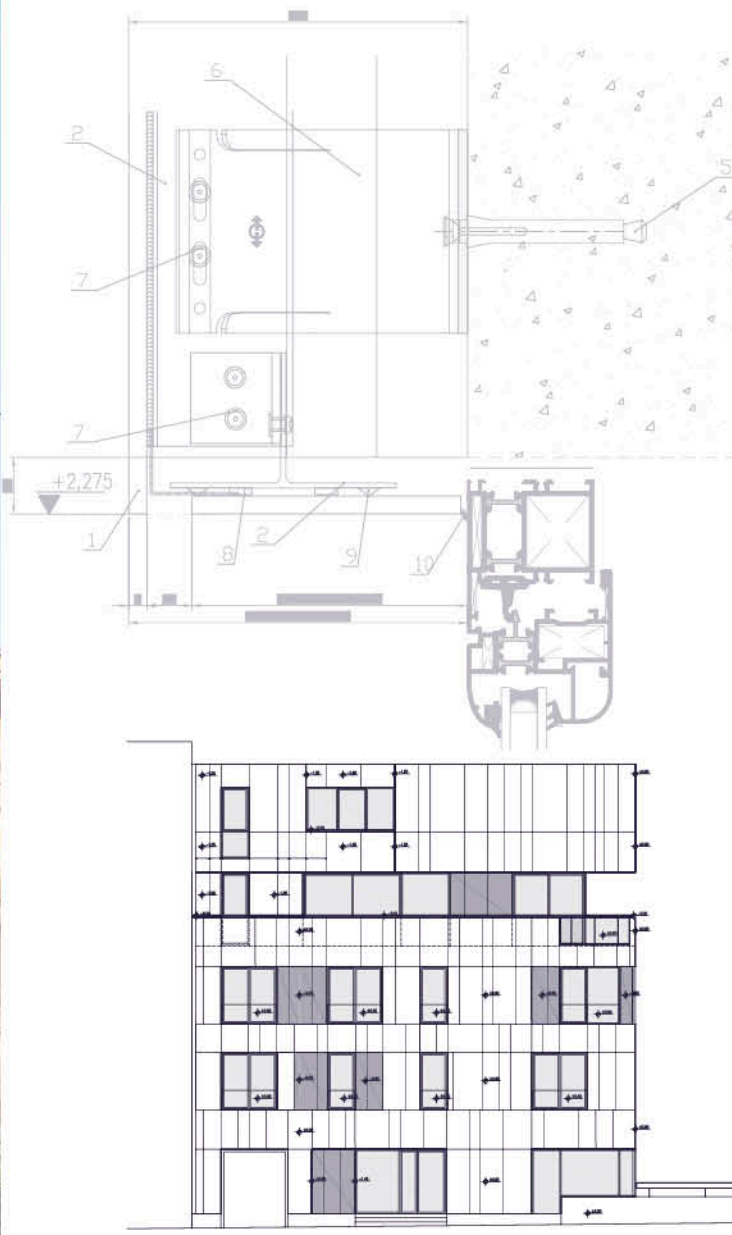






Godina izgradnje / Year of build: 2012  
Investitor / Investor: Rudnap  
Projektovao / Design: Goran Vojvodić, d.i.a.

Fasada / Facade: 800 m<sup>2</sup>  
Sistem / System: Eternit



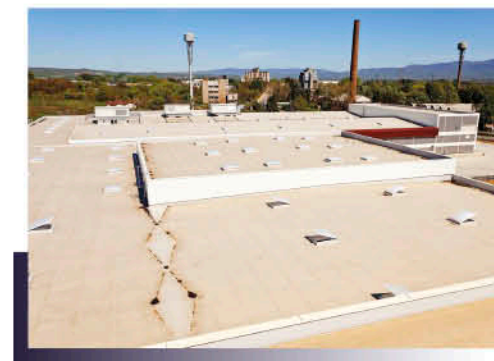




Godina izgradnje / Year of build: 2012  
Investitor / Investor: Grad Subotica  
Projektovao / Design: Support, Subotica  
Fasada / Facade: 1.300 m<sup>2</sup>  
Krov / Roof: 2.000 m<sup>2</sup>



Godina izgradnje / Year of build: 2011  
Investitor / Investor: Falke Serbia  
Projektovao / Design: Mašinoprojekt Koprings, Beograd  
Fasada / Facade: 5.500 m<sup>2</sup>  
Krov / Roof: 13.000 m<sup>2</sup>

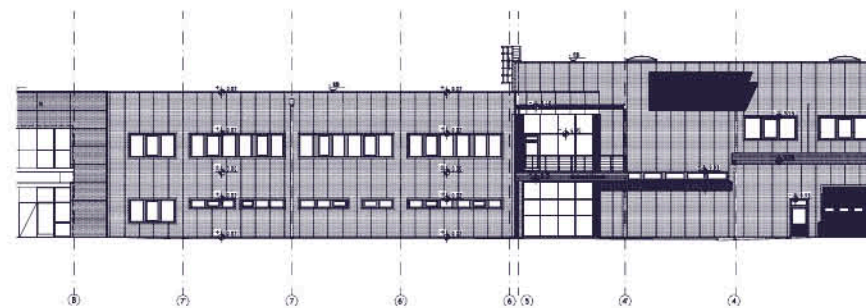
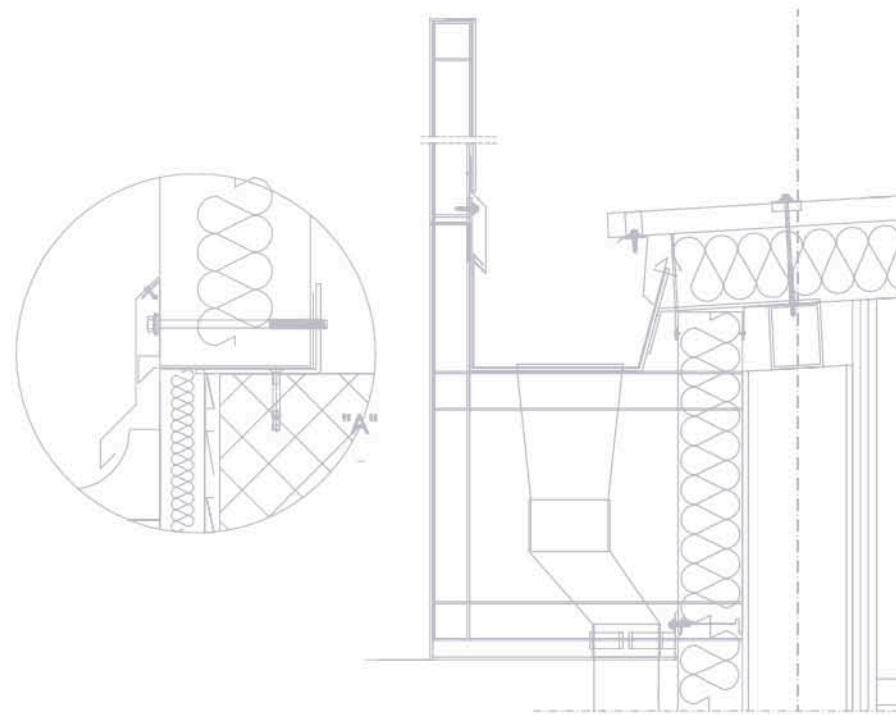






Godina izgradnje / Year of build: 2011  
Investitor / Investor: Shinwon  
Projektovao / Design: ABR, Niš

Fasada / Facade: 4.500 m<sup>2</sup>  
Krov / Roof: 9.600 m<sup>2</sup>

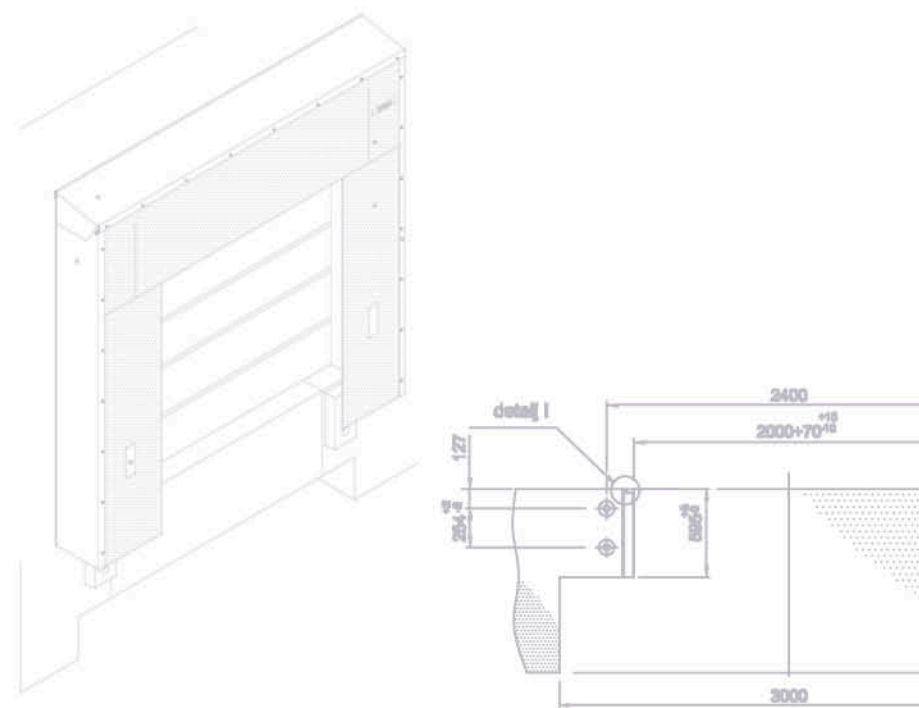






Godina izgradnje / Year of build: 2011  
Investitor / Investor: METRO C&C  
Projektovao / Design: North Engineering, Subotica

Fasada / Facade: 3.700 m<sup>2</sup>  
Krov / Roof: 14.000 m<sup>2</sup>

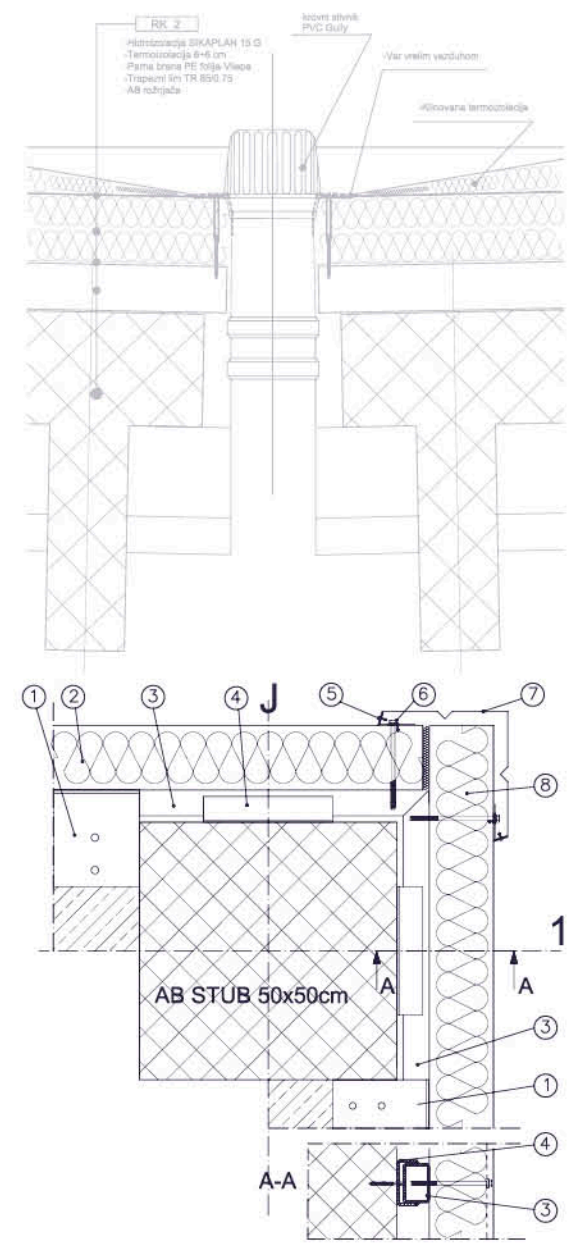






Godina izgradnje / Year of build: 2011  
 Investitor / Investor: YURA Corporation  
 Projektovao / Design: ABR, Niš

Fasada / Facade: 4.000 m<sup>2</sup>  
 Krov / Roof: 18.900 m<sup>2</sup>

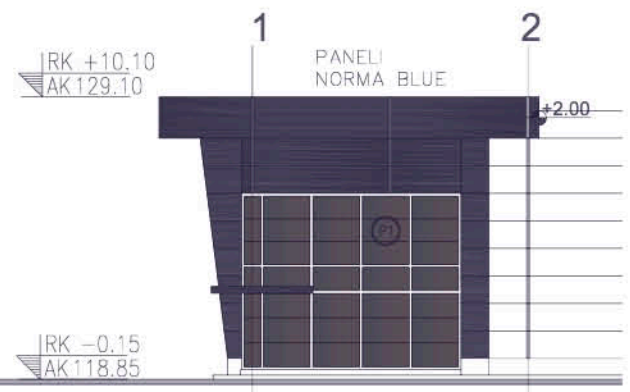
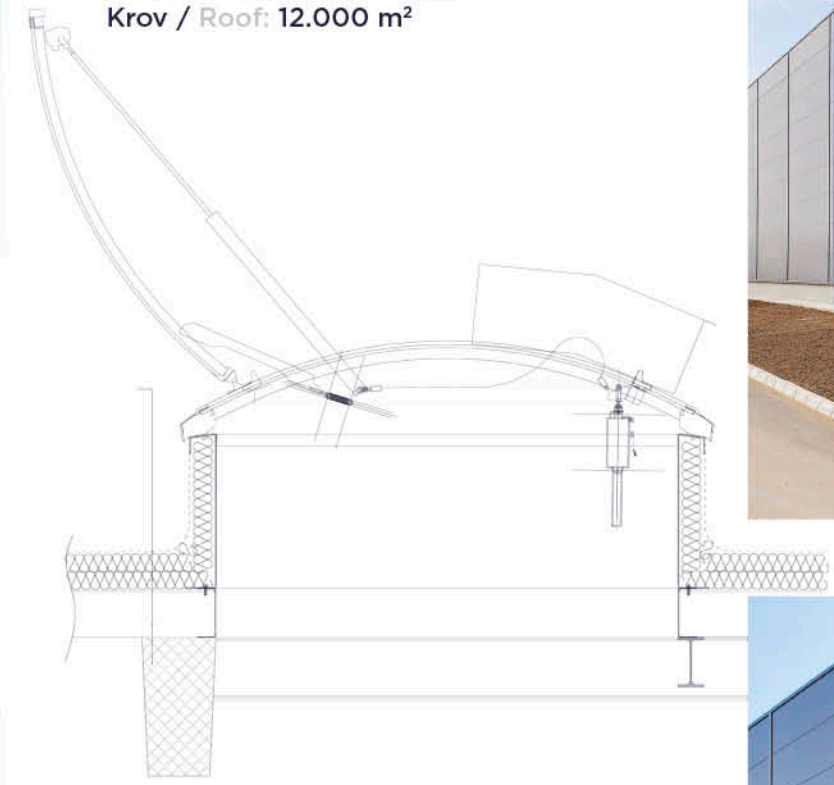






Godina izgradnje / Year of build: 2011  
Investitor / Investor: Norma Group  
Projektovao / Design: North Engineering, Subotica

Fasada / Facade: 5.000 m<sup>2</sup>  
Krov / Roof: 12.000 m<sup>2</sup>

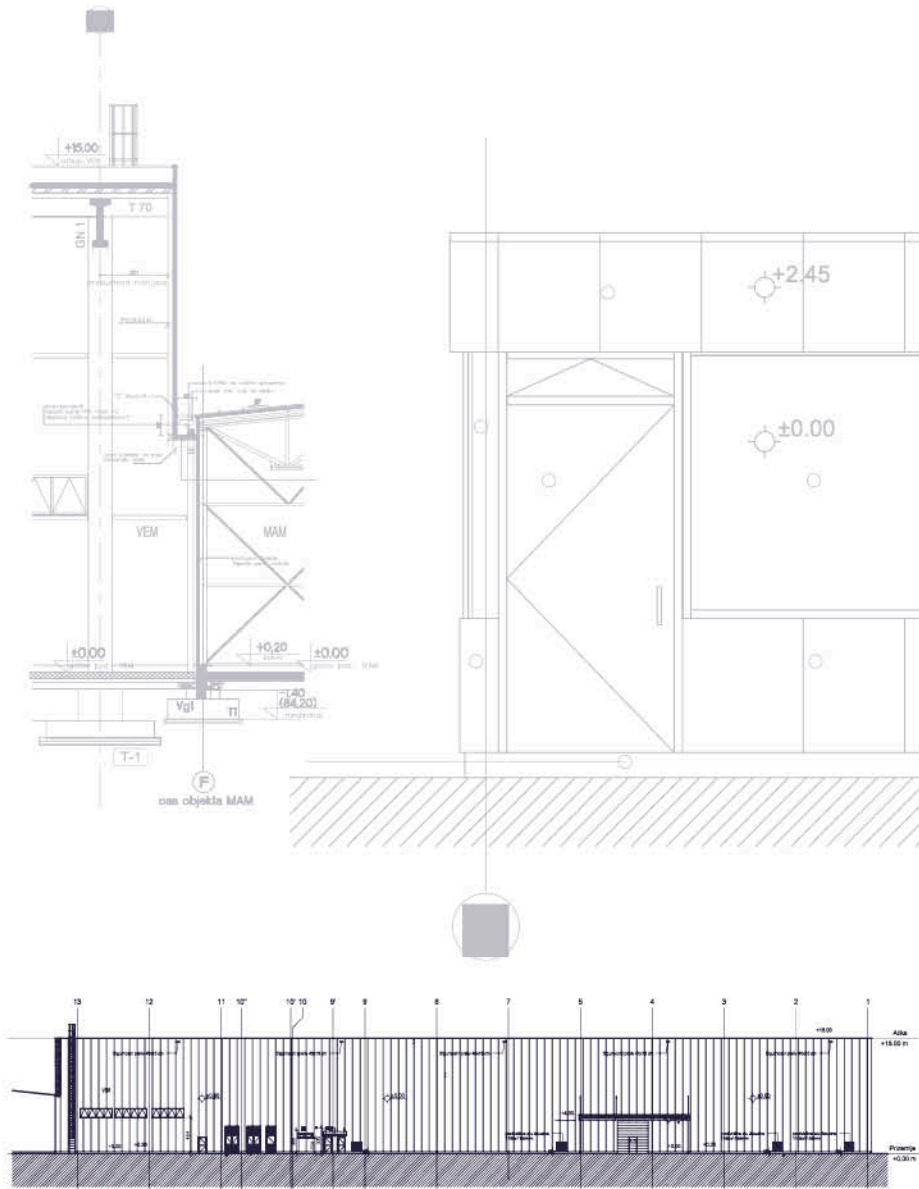






Godina izgradnje / Year of build: 2011  
Investitor / Investor: Polimark  
Projektovao / Design: D.A. Dizajnarhitektura

Fasada / Facade: 5.800 m<sup>2</sup>  
Krov / Roof: 4.600 m<sup>2</sup>

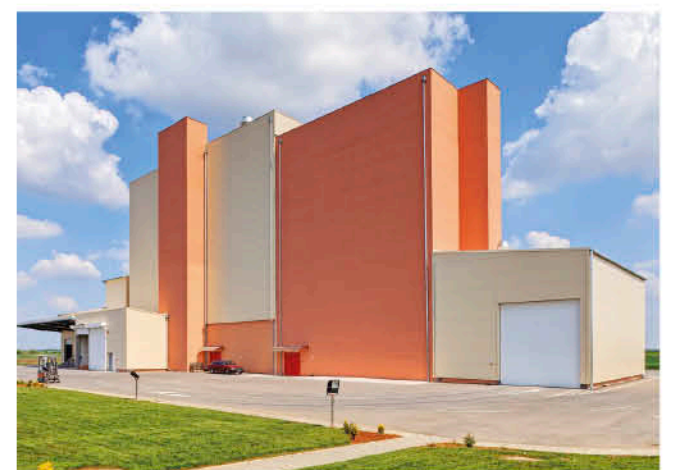
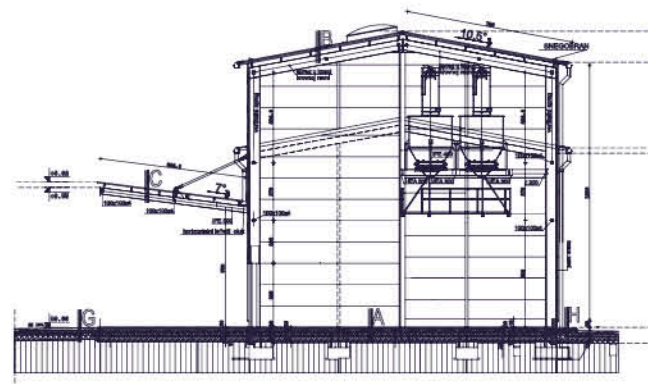
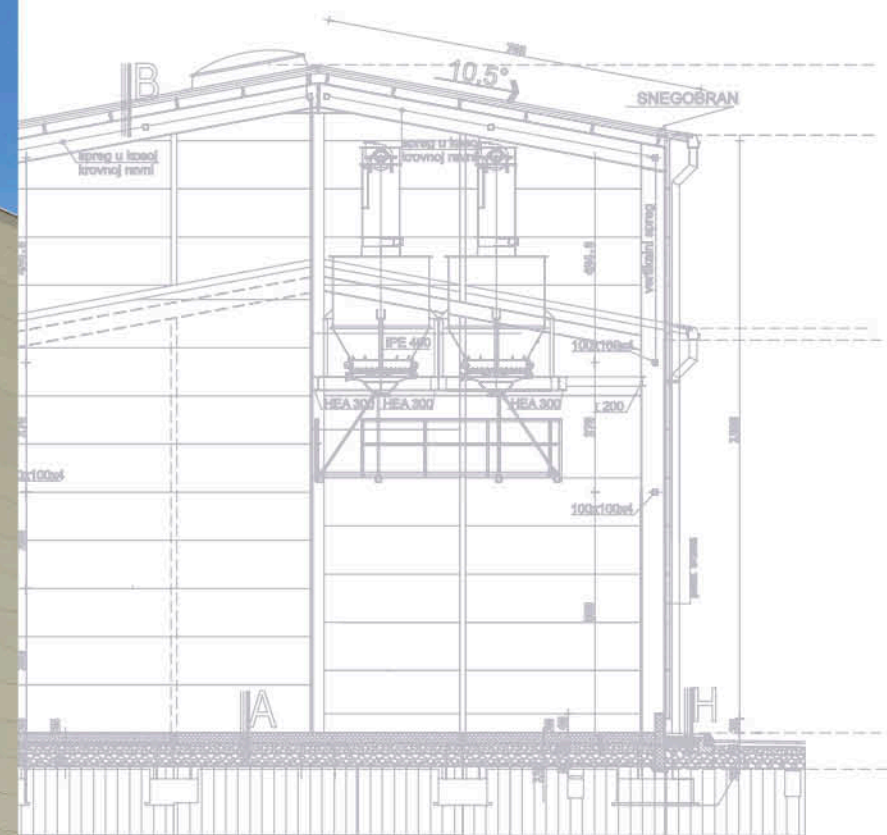






Godina izgradnje / Year of build: 2011  
Investitor / Investor: Julia Mlin  
Projektovao / Design: North Engineering, Subotica

Fasada / Facade: 2.800 m<sup>2</sup>  
Krov / Roof: 700 m<sup>2</sup>

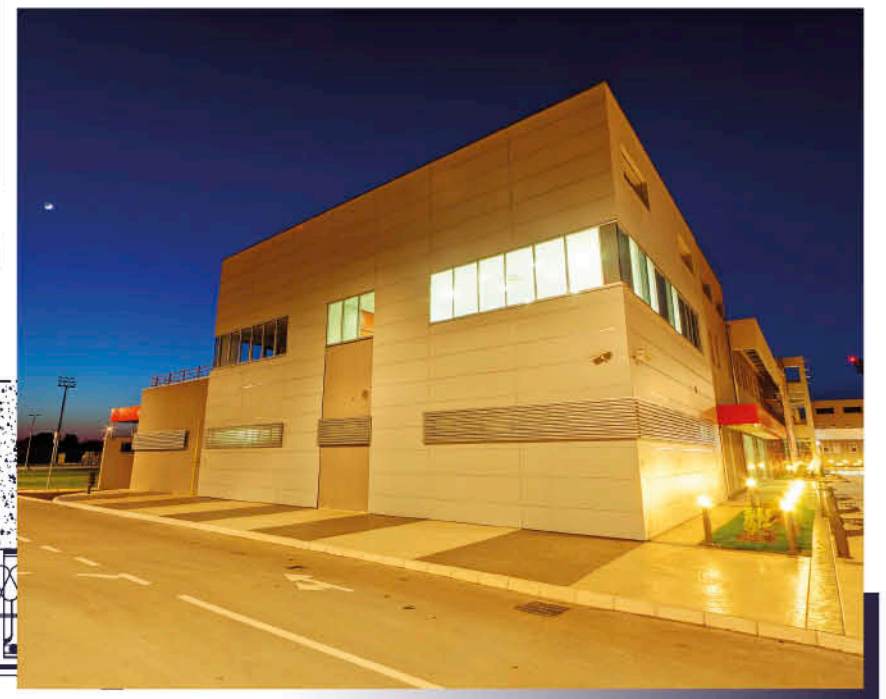
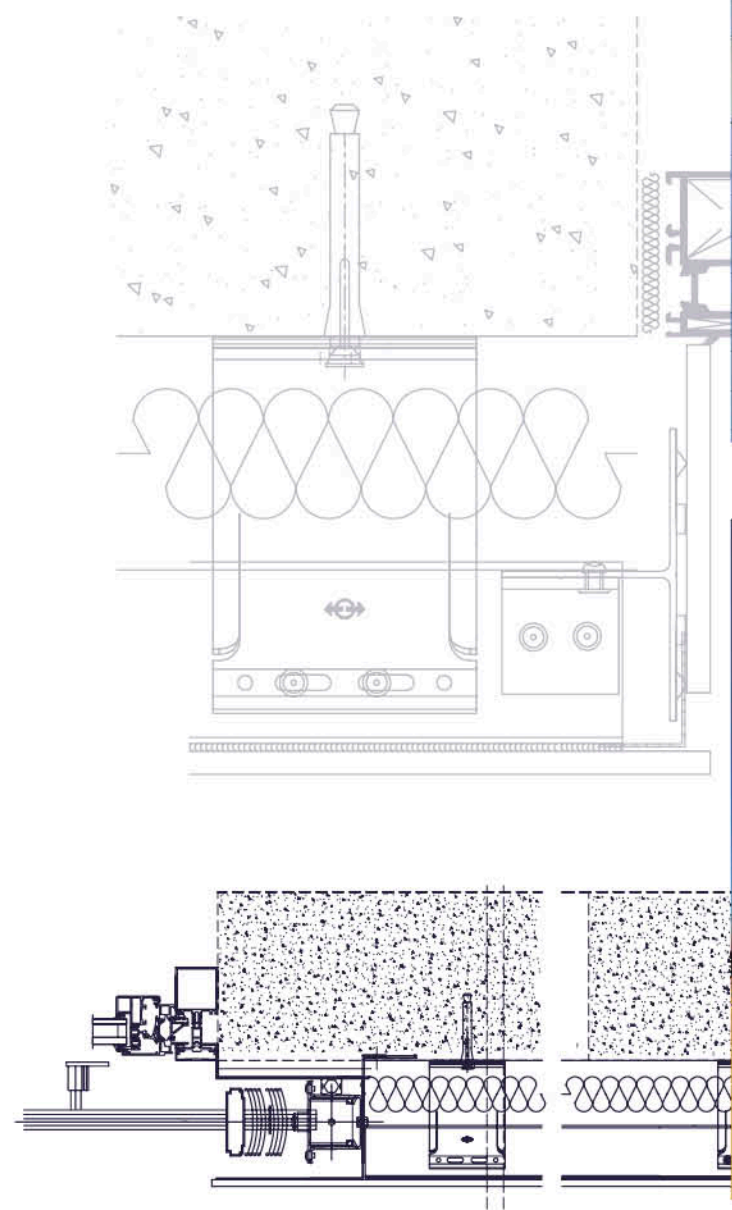






Godina izgradnje / Year of build: 2010  
Investitor / Investor: Fudbalski savez Srbije  
Projektovao / Design: CIP Beograd

Fasada / Facade: 3.400 m<sup>2</sup>  
Sistem / System: Eternit



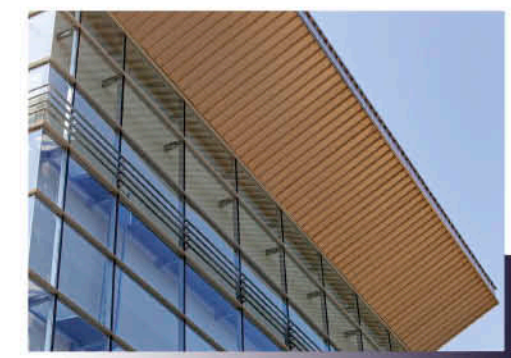




Godina izgradnje / Year of build: 2010  
Investitor / Investor: METRO C&C  
Projektovao / Design: North Engineering, Subotica  
Fasada / Facade: 3.700 m<sup>2</sup>  
Krov / Roof: 12.000 m<sup>2</sup>



Godina izgradnje / Year of build: 2010  
Investitor / Investor: Kontrola letenja Srbije i Crne Gore Smatsa  
Projektovao / Design: Mašinoprojekt Koprining, Beograd  
Krov / Roof: 2.000 m<sup>2</sup>  
Sistem / System: Kalzip



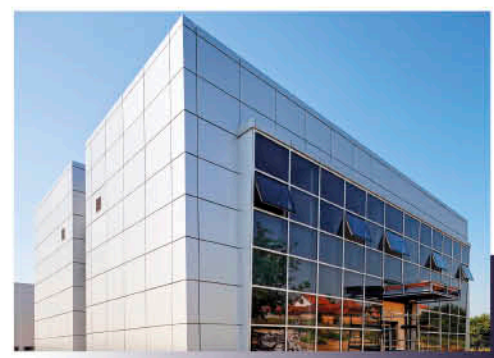




Godina izgradnje / Year of build: 2010  
Investitor / Investor: MIKA PS  
Projektovao / Design: Centroprojekt AD  
Fasada / Facade: 1.700 m<sup>2</sup>  
Krov / Roof: 1.000 m<sup>2</sup>



Godina izgradnje / Year of build: 2009  
Investitor / Investor: Kika  
Projektovao / Design: Mašinoprojekt Koprining, Beograd  
Fasada / Facade: 4.000 m<sup>2</sup>  
Krov / Roof: 7.000 m<sup>2</sup>

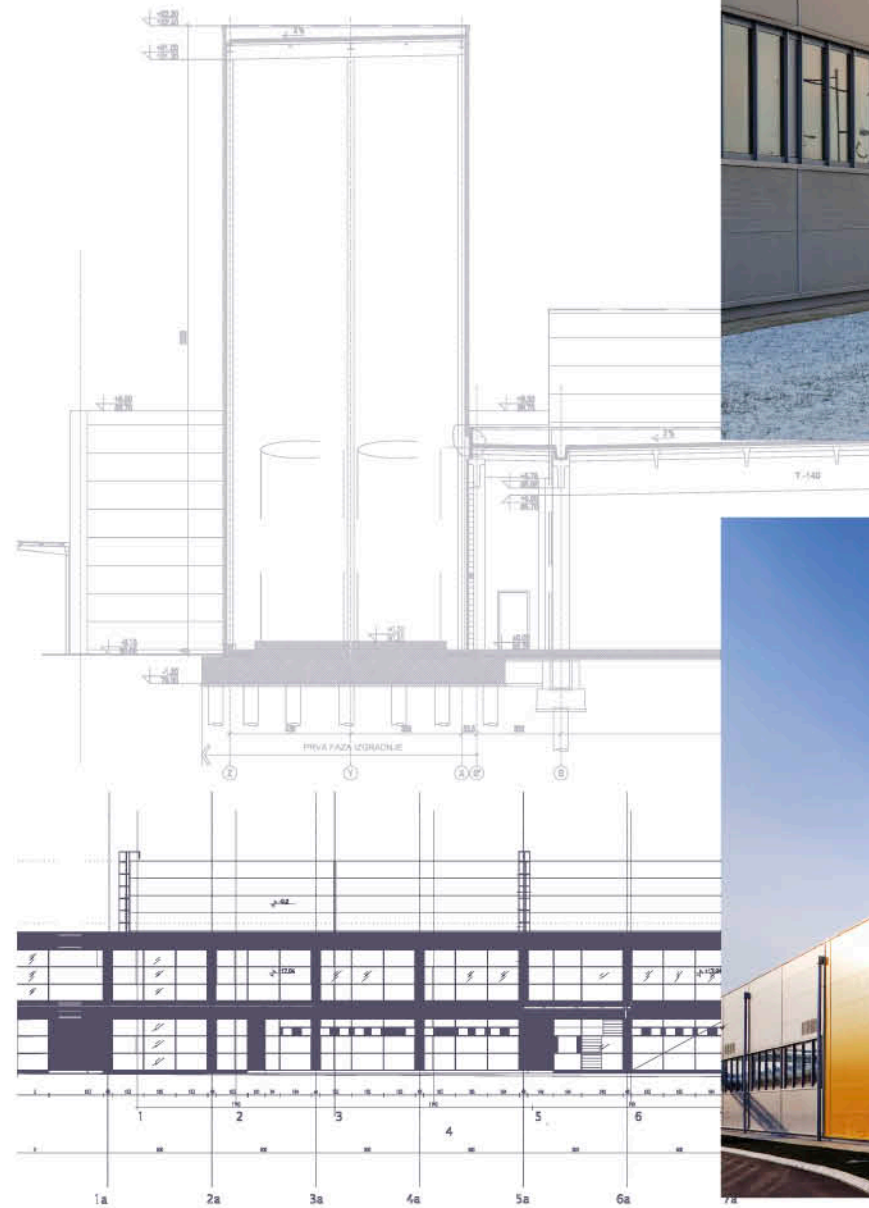






Godina izgradnje / Year of build: 2009  
Investitor / Investor: Banini  
Projektovao / Design: Mašinoprojekt Kopriv, Beograd

Fasada / Facade: 8.000 m<sup>2</sup>  
Krov / Roof: 18.000 m<sup>2</sup>







Godina izgradnje / Year of build: 2009  
Investitor / Investor: Mr. Bricolage  
Projektovao / Design: Service Architecture

Fasada / Facade: 2.800 m<sup>2</sup>  
Krov / Roof: 6.200 m<sup>2</sup>







Godina izgradnje / Year of build: 2008  
Investitor / Investor: DELTA Motors  
Arhitekta / Architect: Mašinoprojekt Kopriv, Beograd  
Fasada / Facade: 1.300 m<sup>2</sup>  
Krov / Roof: 3.700 m<sup>2</sup>



Godina izgradnje / Year of build: 2008  
Investitor / Investor: DELTA MAXI  
Projektovao / Design: Centroprojekt AD  
Fasada / Facade: 3.400 m<sup>2</sup>  
Krov / Roof: 4.000 m<sup>2</sup>



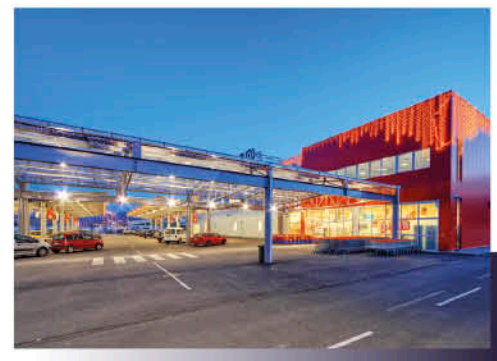




Godina izgradnje / Year of build: 2008  
Investitor / Investor: DELTA MAXI  
Fasada / Facade: 3.900 m<sup>2</sup>  
Krov / Roof: 8.000 m<sup>2</sup>



Godina izgradnje / Year of build: 2008  
Investitor / Investor: Izoterm Plama  
Projektovao / Design: Multicon Inženjering  
Fasada / Facade: 2.200 m<sup>2</sup>  
Krov / Roof: 3.100 m<sup>2</sup>

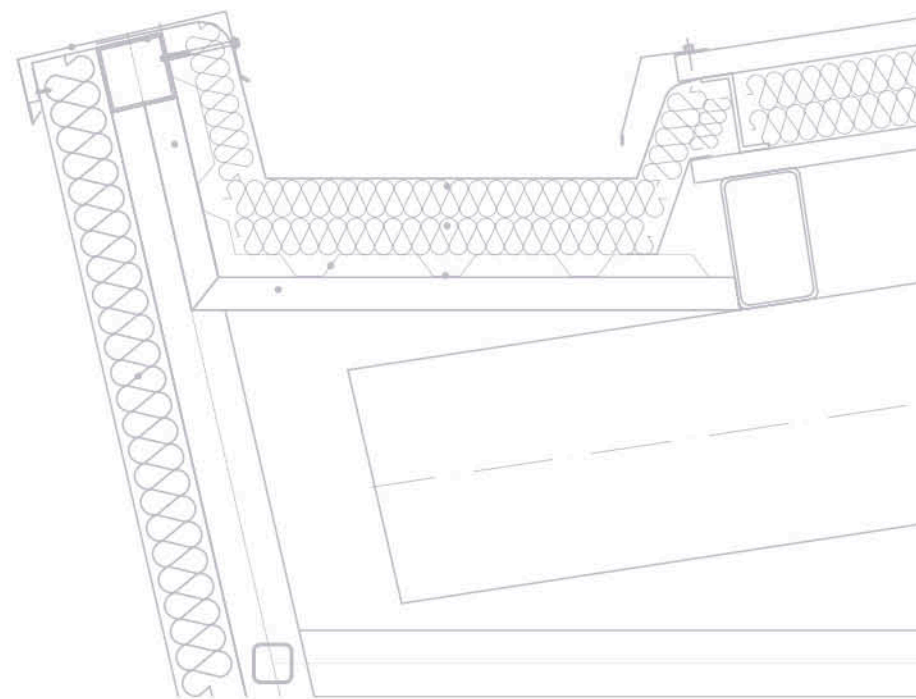




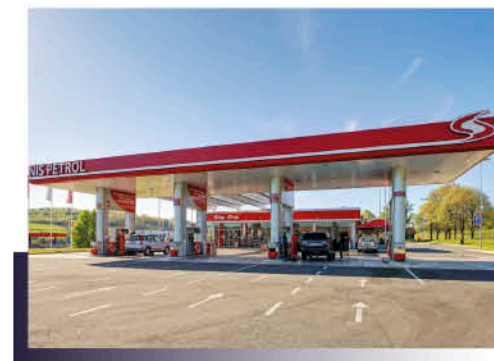


Godina izgradnje / Year of build: 2008  
Investitor / Investor: DELTA MAXI  
Projektovao / Design: D.A. Dizajnarhitektura

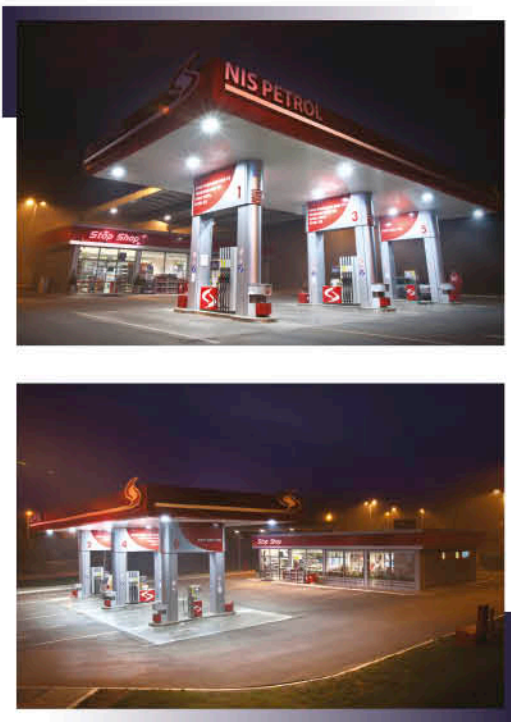
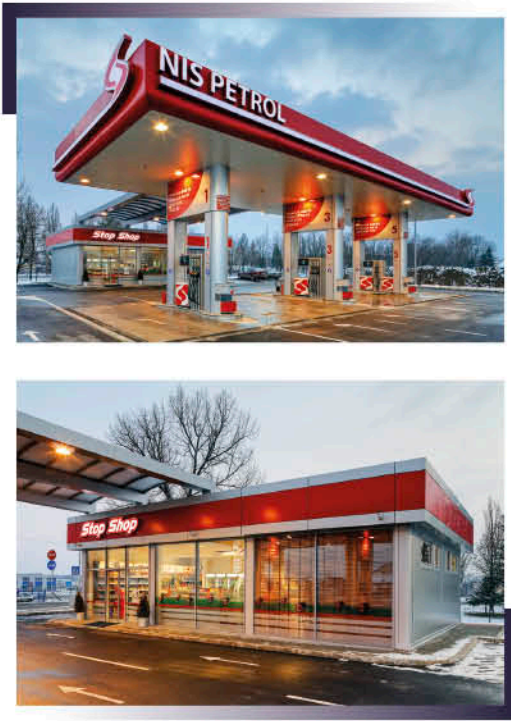
Fasada / Facade: 8.000 m<sup>2</sup>  
Krov / Roof: 18.000 m<sup>2</sup>















Godina izgradnje / Year of build: 2008  
Fasada / Facade: 1.200 m<sup>2</sup>  
Krov / Roof: 1.600 m<sup>2</sup>



Godina izgradnje / Year of build: 2008  
Fasada / Facade: 15.500 m<sup>2</sup>  
Krov / Roof: 10.000 m<sup>2</sup>





## **VALY, Valjevo**

### **VALY, Valjevo**

Godina izgradnje / Year of build: 2007-2012

Fasada / Facade: 20.000 m<sup>2</sup>

Krov / Roof: 5.000 m<sup>2</sup>



## **VALY, Loznica**

### **VALY, Loznica**

Godina izgradnje / Year of build: 2007-2012

Fasada / Facade: 25.000 m<sup>2</sup>

Krov / Roof: 13.000 m<sup>2</sup>



## **SOCIETE GENERALE, Beograd**

### **SOCIETE GENERALE, Belgrade**

Godina izgradnje / Year of build: 2010



## **SIMPLEX, Temerin**

### **SIMPLEX, Temerin**

Godina izgradnje / Year of build: 2010





**KROVNI SVETLARNICI I KUPOLE, LAMILUX CI SISTEM**

**DAYLIGHT ELEMENTS, LAMILUX CI SYSTEM**





## Krovne svetlosne kupole F100

### Roof light domes F100

#### ENERGETSKA EFIKASNOST

Izuzetna toplotna izolacija kao rezultat:

- višeslojnog, unutrašnjeg sistema za dvostruko zaptivanje
- višeslojna ostakljenja kupola
- inovativni, dimenziono stabilan profil rama
- nasadni venac izrađen od kompozita ojačanog staklenim vlaknima sa izolacijom vezanom za celu površinu
- opciono: ugradnja sa toplotno izolovanom osnovnom prirubnicom

#### MEĐUNARODNI STANDARDI

- EN 1873 - kao primer, nosivost prema opterećenju vetrom i snegom sertifikovan prema prvom evropskom proizvodnom standardu za krovne kupole
- EN 12101-2 - sistem za odvođenje dima i toplote testiran u skladu sa evropskim standardom za tu vrstu proizvoda
- može se koristiti širom Evrope bez dodatnih sertifikata

#### STABILNOST

Optimalna nosivost kao rezultat:

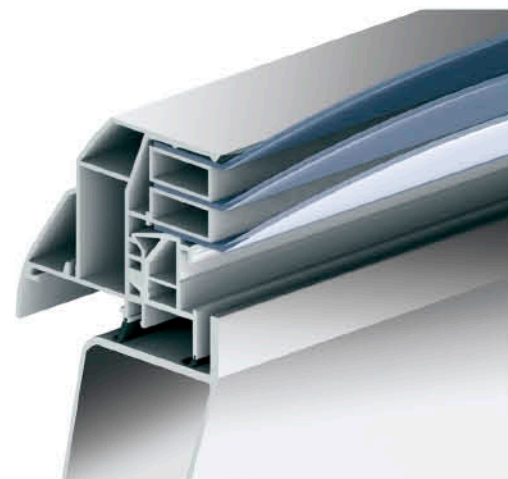
- novog, modularnog sistema profila rama sa delimičnim ojačanjima od fiberglasa
- nasadni venac ojačan staklenim vlaknima sa različitim opcijama pričvršćivanja

#### SIGURNOST

Preventivna zaštita od požara kao rezultat:

- usklađenost sa DIN 18234 (sprečavanje širenja vatre na krov) bez dodatnih mera (na primer, nasipanje šljunka)

Prednosti: bezbednost i ušteda troškova



#### ENERGY EFFICIENCY

Exceptional heat-insulation values due to:

- Multi-layered, internal double seal system
- Multi-glazed upper sections
- Innovative, dimensionally stable frame profiles
- Fibre-reinforced composite upstand with insulation bonded to the whole surface
- Option: Upstand with heat-insulated base flange

#### INTERNATIONAL STANDARDS

- EN 1873 - For example, wind and snow load bearing capacity certified according to the first European product standard for rooflight domes
- EN 12101-2 - Smoke and heat extraction system tested in accordance with the European product standard for smoke and heat control systems
- Can be used throughout Europe without additional certification

#### STABILITY

Optimum load capacity due to

- New, modular frame system with partial reinforcement made of fibre-reinforced plastic
- Fibre-reinforced upstand with variable bracing options

#### SAFETY

Preventive fire protection due to

- Compliance with DIN 18234 (prevention of fire spread on the roof) without additional measures (for example, gravel packing)

Benefits: Safety and cost savings

## Krovne svetlosne trake Rooflight B

### Continuous Rooflight B

#### IZOTERMALNI PRENOSNIK OPTEREĆENJA - IPO

Izotermalni prenosnik opterećenja (IPO) je suštinska komponenta u osnovnom profilu kontinualne svetlosne trake, što omogućava primenu toplotno provodljivih, metalnih komponenti koje treba razdvojiti.

#### ITL - KORISTI OPTIMALNE ENERGETSKE EFIKASNOSTI

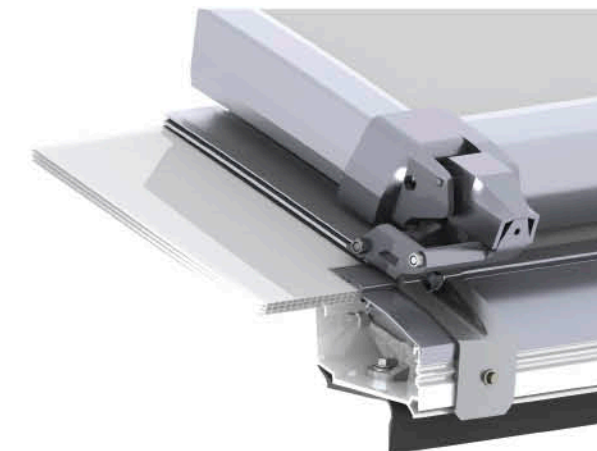
- izvanredne vrednosti Uf baznog profila i pojačana toplotna izolacija
- poboljšana nosivost osnovnog profila
- značajno smanjen rizik od kondenzacije
- optimizovana ventilacija profila
- glatka unutrašnjost sa manje ivica, čime se osigurava manje nečistoća

#### AKTIVNI APSORBER EKSPANZIJE - AEA

Aktivni apsorber ekspanzije (AEA) osigurava dugotrajno i čvrsto zaptivanje između poklopnih lajsni i ostakljenja. On sprečava ispadanje zaptivke u zoni ostakljenja, čak i u slučaju velikih opterećenja vetrom i trpi velika opterećenja snegom.

#### AEA - SIGURNOSNI ASPEKTI U DETALJIMA

- ostakljenje je čvrsto povezano poklopnim lajsnama sa nosećim profilima
- pokrivne lajsne imaju ugrađene zaštitne šine, za montažu okova, instalaciju Sistema za zaštitu od sunca i opremu za održavanje.
- sigurnost je značajno povećana proširenom zonom prijanjanja



#### THE ISOTHERMAL LOAD CONVERTER - ITL

The isothermal load converter (ITL) is the essential component in the base profile of the continuous rooflight, which enables thermally-conductive, metal components to be dispensed with.

#### ITL - BENEFIT FROM OPTIMUM ENERGY EFFICIENCY

- Excellent Uf values in the base profile and even better Heat insulation
- Improved load-bearing capacity of the base profile
- Significantly reduced risk of condensation
- Optimised rebate ventilation
- Smooth interior with fewer edges, ensuring less dirt and grime

#### THE ACTIVE EXPANSION ABSORBER - AEA

The active expansion absorber (AEA) ensures a long-lasting tight seal to the connection between the cover plates and the glazing. It prevents the sealings in the area of the glazing bars from slipping, even in the event of high wind-drag loads and heavy snow loads.

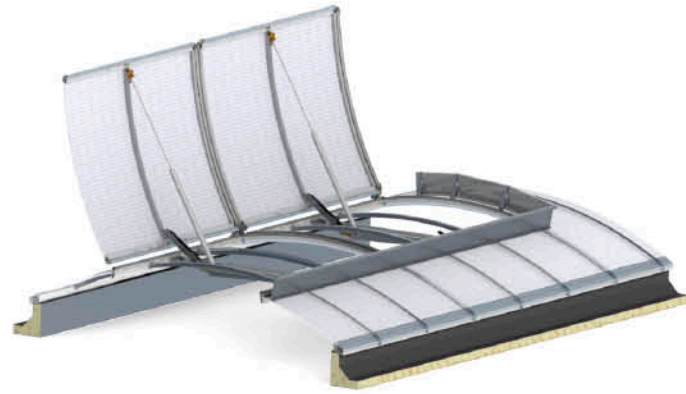
#### AEA - SAFETY ASPECTS IN DETAIL

- The glazing is connected to the cover plates and the glazing bars with a tight, form-fitting seal
- The Cover plates have integrated safety rails, for mounting fittings, solar protection installations and maintenance equipment
- The clamping security is increased due to an extended adhesion region.



## Sistemi za odvođenje dima i toplote

### Smoke and heat exhaust-ventilation systems



#### DOKAZANI UREĐAJI ZA ODVOĐENJE DIMA

- Projektovani u skladu sa DIN 18232-2 i sertifikovani prema EN 12101-2.
- Sprečavaju da se prostorije ispune dimom.
- Pouzdano obezbeđuju sloj bez dima u nižim zonama.
- Sadrže scenario u slučaju požara i minimalizuju posledice
- ... spašavaju ŽIVOTE
- ... štite NEKRETNINE
- ... smanjuju RIZIKE KOMPANIJE
- ... pružaju DODATNU VREDNOST i obezbeđuju **SIGURNOST!**

#### SHEV SISTEMI - OSNOVNI ZA PREŽIVLJAVANJE

- Ovi sistemi koriste termički uzgon za kanalsanje dima, toplote i toksičnih gasova i njihovo izbacivanje. Kako se svež vazduh uvlači u objekat, u donjim slojevima se formira zona bez dima, što:
- omogućava ljudima da pobegnu napolje
  - obezbeđuje vidljivost za spasilačke ekipe kako bi se pomoglo zarobljenim ljudima i ugasila vatra.

- **SAVRŠENA KOMBINACIJA:**  
KROVNI SVETLOSNI ELEMENTI SA SHEV FUNKCIJOM

#### APPROVED SMOKE OUTLET DEVICES

- They are designed in line with DIN 18232-2 and certified as per EN 12101-2.
- They prevent rooms filling with smoke.
- They reliably ensure a smoke-free layer.
- They contain the fire scenario and minimise its consequences.
- ... save LIVES
- ...protect PROPERTY
- ...reduce COMPANY RISKS
- ...offer ADDED VALUE and ensure **SAFETY!**

#### SHEV SYSTEMS - ESSENTIAL FOR SURVIVAL

- These systems use thermal buoyancy to channel smoke, heat and toxic gases into the open air. As fresh air is drawn in, a smoke-free layer forms near the ground,
- enabling people to escape to the outside.
  - providing clear view for rescue services to help captured people and extinguishing the fire.

- **PERFECT COMBINATION:**  
DAYLIGHT ELEMENTS WITH SHEV FUNCTION



## CI SYSTEM PR60 Arhitektura stakla

### CI SYSTEM PR60 Architecture of glass



#### SISTEM PROFILA - ENERGETSKA EFIKASNOST I SIGURNOST

- izuzetno stabilna noseća konstrukcija izrađena od aluminijuma bez torzije
- dizajn praktičnih slobodnih oblika od 0 do 90°
- efikasna ventilacija u svim staklenim zonama
- kontrolisano odvođenje vode i kondenzata zahvaljujući sekundarnom odvodu sa EPDM zaptivkama
- prethodno definisani sistem stezanja staklenih paketa zasnovan na mreži distancera
- elastično oslanjanje staklenih paketa

#### OPTIMIZOVAN SISTEM ZAPTIVANJA RADI OTKLANJANJA KONDENZACIJE

#### KOMFOR I TEHNOLOGIJA

Inteligentna upotreba visoko efikasnih materijala ograničava minimalnu površinsku temperaturu na unutrašnjoj površini stakla. To sprečava kondenzaciju i pojavu buđi.

#### TESTIRAN I ODOBREN SISTEM SA PRIZNATOM SERTIFIKACIJOM.



#### THE PROFILE SYSTEM - ENERGY EFFICIENCY AND SAFETY

- Extremely stable supporting structure made of torsion-free aluminium
- Virtually free-form design from 0 to 90°
- Efficient ventilation in the glass rebates
- Controlled water and condensate run-off thanks to overlapping EPDM secondary draining
- Pre-defined glazing clamping system based on insulating spacer webs
- Elastic bedding of glass pane

#### OPTIMISED SEALING SYSTEM TO AVOID CONDENSATION

#### COMFORT AND TECHNOLOGY

The intelligent use of highly efficient materials limits the minimum surface temperature on the inside of glass structures. This avoids condensation and mould growth.

#### TESTED AND APPROVED WITH RECOGNISED CERTIFICATION



**GRADILI SMO I...**

**WE HAVE BUILT...**





## NELT, Dobanovci

### NELT, Dobanovci

Godina izgradnje / Year of build: 2007

Nadstrešnica / Baudekin: 10.000 kg

Krov / Roof: 4.500 m<sup>2</sup>



## FIAT SRBIJA, Kragujevac

### FIAT SERBIA, Kragujevac

Kotlarnica, trafostanice,

Godina izgradnje / Year of build: 2011

Fasada / Facade: 4.000 m<sup>2</sup>

Krov / Roof: 4.500 m<sup>2</sup>



## VODE VOJVODINE, Novi Sad

### VODE VOJVODINE, Novi Sad

Godina izgradnje / Year of build: 2011

Fasada / Facade: 1.000 m<sup>2</sup>

Krov / Roof: 1.850 m<sup>2</sup>



## MAXI, Kruševac

### MAXI, Krusevac

Godina izgradnje / Year of build: 2004

Fasada / Facade: 1.700 m<sup>2</sup>

Krov / Roof: 4.000 m<sup>2</sup>



## MAXI, Pančevo

### MAXI, Pancevo

Godina izgradnje / Year of build: 2005

Fasada / Facade: 2.400 m<sup>2</sup>

Krov / Roof: 4.500 m<sup>2</sup>



## MAXI, Vršac

### MAXI, Vrsac

Godina izgradnje / Year of build: 2005

Fasada / Facade: 1.000 m<sup>2</sup>

Krov / Roof: 1.400 m<sup>2</sup>





## TEMPO C&C, Beograd

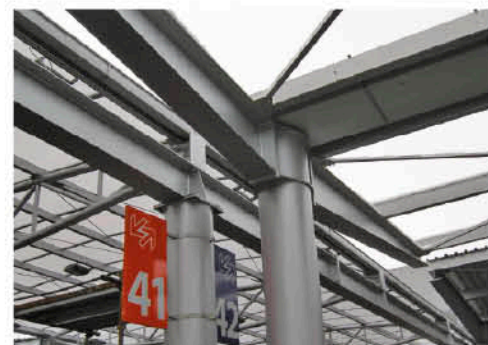
### Tempo C&C, Belgrade

Godina izgradnje / Year of build: 2006

Fasada / Facade: 5.000 m<sup>2</sup>

Nadstrešnica / Baudekin: 3.500 kg

Krov / Roof: 13.500 m<sup>2</sup>



## TEMPO C&C, Novi Sad

### Tempo C&C, Novi Sad

Godina izgradnje / Year of build: 2006

Fasada / Facade: 4.200 m<sup>2</sup>

Nadstrešnica / Baudekin: 2.200 kg

Krov / Roof: 9.200 m<sup>2</sup>



## TEMPO C&C, Niš

### Tempo C&C, Nis

Godina izgradnje / Year of build: 2006

Fasada / Facade: 3.500 m<sup>2</sup>

Nadstrešnica / Baudekin: 1.300 kg

Krov / Roof: 7.200 m<sup>2</sup>



## HONDA, Novi Beograd

### HONDA, New Belgrade

Godina izgradnje / Year of build: 2005

Fasada / Facade: 800 m<sup>2</sup>

Krov / Roof: 1.300 m<sup>2</sup>



## VODA VODA, Banja Vrujci

### VODA VODA, Banja Vrujci

Godina izgradnje / Year of build: 2004

Fasada / Facade: 2.500 m<sup>2</sup>

Krov / Roof: 4.000 m<sup>2</sup>



## TPC Blok 70, Beograd

### TPC Blok 70, Beograd

Godina izgradnje / Year of build: 2004

Fasada / Facade: 3.700 m<sup>2</sup>

Fasadna podkonstrukcija /  
Underconstruction Facade: 45t

Krov / Roof: 3.200 m<sup>2</sup>







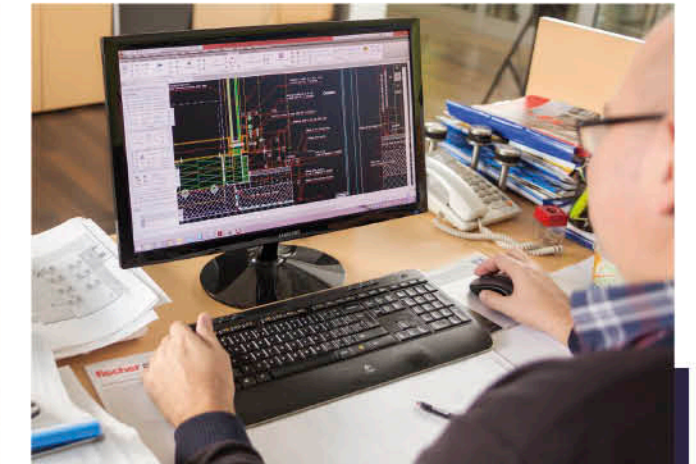
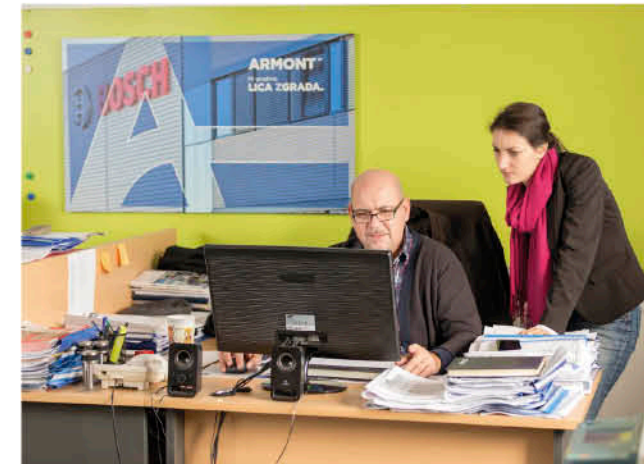
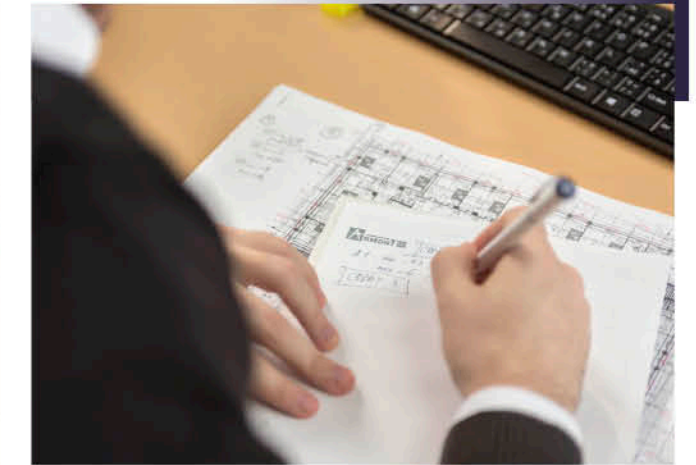
**PROJEKTOVANJE, PROIZVODNJA I MONTAŽA**

**DESIGN, PRODUCTION AND INSTALLING**





## PROJEKTOVANJE DESIGN



Sve nove projekte posmatramo kao izazov i mogućnost za primenu inovativnih projektnih rešenja.

Kombinacijom vrlo sofisticiranih arhitektonskih rešenja i savremene građevinske tehnologije, Armont SP fasade daju novi estetski pristup – definišu lica novih zgrada.

Kao proizvod tesne saradnje između našeg projektnog biroa i Klijenata, svakodnevno se razvijaju personalizovana rešenja i koncepti za sve oblasti izrade prozora i fasada. Uz pomoć najsavremenijih programa kao što su Autocad, Cad-Plan Athena, Orgadata Logical, Elusoft, planiramo kompletnu konstrukciju na osnovu početnih crteža.

We consider all new projects as a challenge and opportunity for application of innovative project solutions.

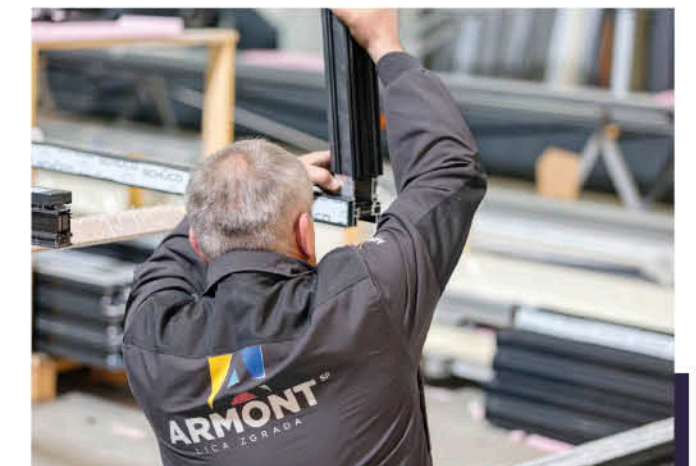
By combining very sophisticated architectural solutions and modern building technology, Armont SP facades give a new esthetic approach – we define faces of new buildings.

As a product of close cooperation between our project department and the Clients, personalized solutions and concepts for every area of the window and facade are being developed on a daily basis. With the help of most modern programs such as Autocad, Cad-Plan Athena, Orgadata Logical, Elusoft, we plan a complete construction based on the initial drawings.





**PROIZVODNJA**  
**PRODUCTION**



#### **Fasadna bravarija i staklene fasade**

ARMONT SP program proizvodnje prozora, vrata i fasadnih elementa je efikasan, precizan i po najvišim tehničkim standardima. Proizvodni pogon površine od 2.000 kvadratnih metara svakodnevno je u funkciji u cilju realizacije raznovrsnih projekata. U linijskoj proizvodnji, prozori, fasade, elementi fasade i završni delovi se montiraju i isporučuju na gradilište uvek u zadatim rokovima. Industrijska proizvodnja pod optimalnim uslovima je garancija za prilagođeni kvalitet.

#### **Fasadne obloge, ventilisane fasade**

Proizvodnja aluminijumskih obloga je okosnica našeg poslovanja, ali nije i jedino što Armont SP proizvodi. Posedujemo i dugogodišnje iskustvo u proizvodnji svih ostalih vrsta ventilisanih fasada kao što su Trespa, Fundermax, Eternit, Alucobond, Alubond, kao i specijalno dizajniranih obloga i zavarenih konstrukcija. Proizvodimo prema najnovijim standardima tehnologije savijanja i obrade metala.

#### **Facade locksmiths and glass facades**

ARMONT SP program of window, door and facade production is efficient, precise and according to the highest technical standards. The production area of 2.000 square meters is operational every day for the purpose of realization of various projects. In liner production, windows, facades, facade elements and finishing components are mounted and delivered to the site all the time. Industrial production under optimal conditions is a guarantee of custom quality.

#### **Facade lining, ventilated facades**

The production of aluminum coatings is the backbone of our business, but it is not the only thing Armont SP produces. We have many years of experience in the production of all other types of ventilated façades such as Trespa, Fundermax, Eternit, Alucobond, Alubond, as well as specially designed wraps and welded structures. We manufacture according to the latest standards of bending and metal processing technology.





**MONTAŽA**  
**INSTALLING**



ARMONT SP osim projektovanja i proizvodnje nudi i vrhunsku uslugu montaže prozora i fasada. Montažne radove izvodimo po najvišim standardima, uz superviziju stručnih kadrova na terenu. Zato naše fasade imaju najviše ocene po pitanju energetske efikasnosti a prostor u objektima ispunjava sve norme zdrave životne sredine. Mi znamo šta je važno da bi kvalitet bio merljiv.

Apart from design and manufacturing, ARMONT SP offers a top-of-the-range window and facade assembly service. Installation works are carried out to the highest standards, with the supervision of professional personnel in the field. That's why our facades have the highest ratings in terms of energy efficiency and space in buildings meets all norms of a healthy environment. We know what's important for quality to be measurable.



## REFERENCE

## REFERENCES



Naše dosadašnje aktivnosti su dovele do kreiranja prepoznatljivog imena ARMONT SP kao kvalitetnog, pouzdanog, sigurnog i dobrog partnera kao lidera u izgradnji montažnih objekata.

Kontinuiran napredak i mnogobrojni realizovani objekti najbolji su pokazatelji dosadašnjeg uspešnog rada. Između ostalih to su:

### Proizvodni objekti:

- BOSCH, Pećinci
- MIKROELEKTORINKA, Zemun
- NORMA GROUP, Subotica
- FALKE, Leskovac
- DUNKERMOTOREN, Subotica
- MUEHLBAUER, Stara Pazova
- JULIA MLIN, Feketić  
(deo Muehle Cottbus GMBH grupacije)
- YURA, Leskovac
- SHINWON, Niš
- FAS - FIAT, Kragujevac
- BANINI, Kikinda
- RAUCH, Koceljeva
- VALY, Valjevo
- VALY, Loznica
- POLIMARK, Beograd
- GALENIKA - FITOFARMACIJA, Beograd
- LEDO, Podgorica
- NELT CO, Šimanovci
- GORENJE, Stara Pazova i Zajecar
- MIKA PS, Dobanovci
- IZOTERM, Indija
- PINK FILMSKI STUDIO, Šimanovci
- DTD RIBARSTVO, Bački Jarak
- COCA-COLA HBC, Beograd
- ROSA, Surdulica
- FLORIDA BEL, Beograd
- AL PACK, Subotica
- NESTLE, Dobanovci
- BN BOS, Zemun
- ALPEN - LEMKEN, Nemačka
- BANJA KOMERC BEKAMENT, Arandjelovac
- BENETTON, Niš
- MAURICIUS VEROPULOS, Beograd
- FORMEX, Belegiš
- CONTITECH, Subotica
- BISI, Stara Pazova
- LA LINEA VERDE, Dobanovci
- LE BELIER, Kikinda
- MONDI, Šabac,
- AGROUNIJA, Krčedin
- GUMA-S, Sombor
- AGROMARKET, Indija

Our past activities have led to the creation of a recognizable name ARMONT SP as a quality, reliable, safe and good partner as a leader in the construction of prefabricated buildings.

Continuous progress and numerous realized objects are the best indicators of the successful work so far. Among others are:

### Production facilities:

- BOSCH, Pecinci
- MIKROELEKTORINKA, Zemun
- NORMA GROUP, Subotica
- FALKE, Leskovac
- DUNKERMOTOREN, Subotica
- MUEHLBAUER, Stara Pazova
- JULIA MLIN, Feketic  
(part of Muehle Cottbus GMBH group)
- YURA, Leskovac
- SHINWON, Nis
- FAS - FIAT, Kragujevac
- BANINI, Kikinda
- RAUCH, Koceljeva
- VALY, Valjevo
- VALY, Loznica
- POLIMARK, Belgrade
- GALENIKA - FITOFARMACIJA, Belgrade
- LEDO, Podgorica
- NELT CO, Simanovci
- GORENJE, Stara Pazova and Zajecar
- MIKA PS, Dobanovci
- IZOTERM, Indjija
- PINK MOVIE STUDIO, Simanovci
- DTD RIBARSTVO, Backi Jarak
- COCA-COLA HBC, Belgrade
- ROSA, Surdulica
- FLORIDA BEL, Belgrade
- AL PACK, Subotica
- NESTLE, Dobanovci
- BN BOS, Zemun
- ALPEN - LEMKEN, Germany
- BANJA KOMERC BEKAMENT, Arandjelovac
- BENETTON, Nis
- MAURICIUS VEROPULOS, Belgrade
- FORMEX, Belegis
- CONTITECH, Subotica
- BISI, Stara Pazova
- LA LINEA VERDE, Dobanovci
- LE BELIER, Kikinda
- MONDI, Sabac
- AGROUNIJA, Krcedin
- GUMA-S, Sombor
- AGROMARKET, Indjija



### Trgovinski centri:

- METRO CASH & CARRY, Subotica
- METRO CASH & CARRY, Beograd
- KIKA, Beograd
- BIG CEE POWER CENTER, Novi Sad
- DELTA CITY, Beograd
- DELTA CITY, Podgorica
- MR. BRICOLAGE, Niš
- RODA C&C, Novi Beograd
- TEMPO - MAXI, Smederevska Palanka, Kraljevo, Čačak, Novi Sad, Beograd, Niš, Vrnjačka Banja, Bar, Podgorica, Pančevo, Šabac, Kruševac, Vršac
- LIDL, Smederevo, Beograd (Vojislava Ilića i Kneza Višeslava), Stara Pazova, Šabac, Zrenjanin, Subotica, Niš, Novi Sad, Sombor, Leskovac, Kruševac
- IDEA, Novi Banovci

### Auto centri i benzinske pumpe:

- BMW – MINI, Beograd
- HONDA, Beograd
- SIMPLEX, Temerin
- NIS - GAZPROM NEFT, Šabac
- NIS - GAZPROM NEFT, Bačka Topola
- NIS - GAZPROM NEFT, Loznica
- NIS - GAZPROM NEFT, Smederevo
- NIS - GAZPROM NEFT, Mali Požarevac
- ŠTELA AUTO - SERVISNA RADIONICA, Zemun
- AMSS CENTAR ZA MOTORNA VOZILA, Beograd
- MAZDA, Niš

### Poslovni objekti:

- NETIKS, Beograd
- GORENJE, Novi Beograd
- KONTROLA LETA, Surčin i Batajnica
- STAMBENO POSLOVNI OBJEKAT KRUNSKA 87, Beograd
- KINOTEKA, Beograd
- RAIFFEISEN BANK, Upravna zgrada, Novi Beograd
- MOZZART SPORTSKA KLADIONICA, Upravna zgrada, Beograd
- U-BAHN, Stanica metroa, Düsseldorf, Nemačka
- MUSEUM, Hanover, Nemačka
- NLB BANKA, Beograd
- METTMAN, Nemačka
- INSTITUT ZA MATERIJALE SRBIJE – IMS, Beograd
- PFB, Beograd
- TERBOINOX, Sombor

### Shopping centers:

- METRO CASH & CARRY, Subotica
- METRO CASH & CARRY, Belgrade
- KIKA, Belgrade
- BIG CEE POWER CENTER, Novi Sad
- DELTA CITY, Belgrade
- DELTA CITY, Podgorica
- MR. BRICOLAGE, Nis
- RODA C&C, New Belgrade
- TEMPO - MAXI, Smederevska Palanka, Kraljevo, Cacak, Novi Sad, Belgrade, Nis, Vrnjacka Banja, Bar, Podgorica, Pancevo, Sabac, Krusevac, Vrsac
- LIDL, Smederevo, Belgrade (Vojislava Ilica and Kneza Viseslava), Stara Pazova, Sabac, Zrenjanin, Subotica, Nis, Novi Sad, Sombor, Leskovac, Krusevac
- IDEA, Novi Banovci

### Car centers and gas stations:

- BMW – MINI, Belgrade
- HONDA, Belgrade
- SIMPLEX, Temerin
- NIS - GAZPROM NEFT, Sabac
- NIS - GAZPROM NEFT, Backa Topola
- NIS - GAZPROM NEFT, Loznica
- NIS - GAZPROM NEFT, Smederevo
- NIS - GAZPROM NEFT, Mali Požarevac
- STELA AUTO - SERVICE WORKSHOP, Zemun
- AMSS CENTER FOR MOTOR VEHICLES, Belgrade
- MAZDA, Nis

### Business facilities:

- NETIKS, Belgrade
- GORENJE, New Belgrade
- FLY CONTROL, Surcin and Batajnica
- RESIDENTIAL BUILDING OBJECT KRUNSKA 87, Belgrade
- KINOTEKA, Belgrade
- RAIFFEISEN BANK, Administrative building, New Belgrade
- MOZZART SPORTS BETTING, Administrative building, Belgrade
- U-BAHN, Metro stations, Düsseldorf, Germany
- MUSEUM, Hanover, Germany
- NLB BANKA, Belgrade
- METTMAN, Germany
- THE INSTITUTE FOR MATERIALS OF SERBIA – IMS, Belgrade
- PFB, Belgrade
- TERBOINOX, Sombor

### Rezidencijalni objekti:

- ALŽIRSKA AMBASADA, Beograd
- BELVILLE UNIVERZITETSKO NASELJE BLOK 67, Novi Beograd
- HOTEL PRAG, Beograd
- RUSKI POSLOVNI KLUB, Beograd
- HOTEL GLORIA, Subotica
- TRGOVINA MATIJEVIĆ, Kruševac
- RALF HILBECK, Nemačka
- JAPANSKA AMBASADA, Beograd
- DORMAGE- MERKENICH, Keln, Nemačka
- WINTERBACH, Walhausen, Nemačka
- MÜLHEIM, Nemačka
- GRAĐEVINSKI FAKULTET, Beograd
- HOTEL TOYOKO, Frankfurt, Nemačka
- MANASTIR JAZAK, Fruška gora
- DOROTHEEN-QUARTIER, Stuttgart, Nemačka
- AMBASADA UAE, Beograd
- AMBASADA KRALJEVINE BELGIJE, Beograd
- PALATA PRAVDE, Beograd
- PUPINOVA PALATA, Novi Sad
- HOTEL PALIĆ, Palić

### Zdravstveni objekti:

- KBC DRAGIŠA MIŠOVIĆ, Beograd
- DOM ZDRAVLJA JEDRO, Novi Beograd
- KLINIČKI CENTAR, Niš

### Sportski objekti:

- SPORTSKI CENTAR PROZIVKA, Subotica
- NACIONALNA KUĆA FUDBALA, Stara Pazova
- SPORTSKI CENTAR SA BAZENIMA, Stara Pazova
- UNIVERZITETSKI VESLAČKI KLUB ADA CIGANLIJA, Beograd
- SPORTSKA HALA, Srpska Crnja

Posedujemo sertifikat ISO 9001 2008, a svojim radom neprekidno unapređujemo Sistem menadžmenta kvalitetom.

Gradimo dugoročne odnose sa svojim klijentima. Ukoliko tražite takvo poverenje i sigurnost, kao i kvalitet pre svega, onda ste na pravom mestu.

**MI SMO IZBOR NAJBOLJIH.**

### Residential buildings:

- EMBASSY OF ALGERIA, Belgrade
- BELVILLE UNIVERSITY CAMPUS BLOK 67, New Belgrade
- HOTEL PRAGUE, Belgrade
- RUSSIAN BUSINESS CLUB, Belgrade
- HOTEL GLORIA, Subotica
- COMMERCE MATIJEVIC, Krusevac
- RALF HILBECK, Germany
- EMBASSY OF JAPAN, Belgrade
- DORMAGE- MERKENICH, Köln, Germany
- WINTERBACH, Walhausen, Germany
- MÜLHEIM, Germany
- CONSTRUCTION FACULTY, Belgrade
- HOTEL TOYOKO, Frankfurt, Germany
- MONASTERY JAZAK, Fruska gora
- DOROTHEEN - QUARTIER, Stuttgart, Germany
- EMBASSY OF UAE, Belgrade
- EMBASSY OF THE KINGDOM OF BELGIUM, Belgrade
- THE PALACE OF JUSTICE, Belgrade
- PUPIN PALACE, Novi Sad
- HOTEL PALIC, Palic

### Health facilities:

- KBC DRAGISA MISOVIC, Belgrade
- HEALTH CENTRE JEDRO, New Belgrade
- CLINICAL CENTRE, Nis

### Sports objects:

- SPORTS CENTER PROZIVKA, Subotica
- NATIONAL HOUSE OF FOOTBALL, Stara Pazova
- SPORTS CENTER WITH SWIMMING POOLS, Stara Pazova
- UNIVERSITY ROWER CLUB ADA CIGANLIJA, Belgrade
- SPORTS HALL, Srpska Crnja

We have the ISO 9001 2008 certificate, and with our work we continuously improve the Quality Management System.

We build long-term relationships with our clients. If you are looking for such confidence and security, as well as quality first of all, then you are in the right place.

**WE ARE THE CHOICE OF THE BEST.**





## NAŠI PARTNERI OUR PARTNERS

U skladu sa delatnošću našeg preduzeća i nastojanjima da poboljšamo kvalitet gradnje, dobavljači zauzimaju značajno mesto u realizaciji naših objekata:

**ALUKÖNIGSTAHL** Alukoeningstahl, [www.alukoenigstahl.rs](http://www.alukoenigstahl.rs)

**SCHÜCO** Schüco, [www.schueco.com](http://www.schueco.com)



Reynaers, [www.reynaers.com](http://www.reynaers.com)



Lamilux, [www.lamilux.com](http://www.lamilux.com)



Raico, [www.raico.de](http://www.raico.de)



Wicona, [www.wicona.com](http://www.wicona.com)



Feal, [www.feal.ba](http://www.feal.ba)



Alumil, [www.alumil.com](http://www.alumil.com)



AGC Glass, [www.agc-glass.eu](http://www.agc-glass.eu)



Guardian, [www.guardianglass.com](http://www.guardianglass.com)



Saint Gobain, [www.saint-gobain.com](http://www.saint-gobain.com)



Konkav Konveks, [www.konkav-konveks.com](http://www.konkav-konveks.com)



Sky Glass, [www.skyglass.rs](http://www.skyglass.rs)



Warema, [www.warema.com](http://www.warema.com)



Hella, [www.hella.info](http://www.hella.info)

**HunterDouglas** Hunter Douglas, [www.hunterdouglas.com](http://www.hunterdouglas.com)

Rad sa proverenim partnerima, poštujući norme, odredbe i preporuke u skladu sa sertifikovanim zahtevima kvaliteta EU, garantuje kvalitet izrade i montaže.

In accordance with the activity of our company and the efforts to improve the quality of construction, suppliers take a significant place in the realization of our facilities:



Forster, [www.forster-profile.ch](http://www.forster-profile.ch)



Jansen, [www.jansen.com](http://www.jansen.com)

Alubond Europe

Alubond, [alubondeurope.com](http://alubondeurope.com)



Alucobond, [www.alucobond.com](http://www.alucobond.com)



Eternit, [www.eternit.at](http://www.eternit.at)



Trespa, [www.trespa.com](http://www.trespa.com)



Fundermax, [www.fundermax.at](http://www.fundermax.at)



SIKA, [www.srb.sika.com](http://www.srb.sika.com)



Ejot, [www.ejot.rs](http://www.ejot.rs)



Fischer, [www.fischer.group](http://www.fischer.group)



Hilti, [www.hilti.group](http://www.hilti.group)



Würth, [www.wurth.rs](http://www.wurth.rs)



Siegenia, [www.siegenia.com](http://www.siegenia.com)



Fapim, [www.fapim.it](http://www.fapim.it)



GU, [www.g-u.com](http://www.g-u.com)



Sobinco, [www.sobinco.com](http://www.sobinco.com)

Working with proven partners, respecting the norms, provisions and recommendations in line with the certified EU quality requirements, guarantees the quality of workmanship and assembly.





ARMONT SP d.o.o.  
Batajnički drum 283,  
11080 Zemun, Beograd  
Republika Srbija  
Tel: +381 (0)11 3750 141,  
3750 142  
Fax: +381 (0)11 7489 119  
E-mail: [office@armont.biz](mailto:office@armont.biz)  
**[www.armont.biz](http://www.armont.biz)**



**Certificate Number 9858**  
**ISO 9001**