



Lica zgrada

govore o **VREMENIMA** u kojima su zgrade nastajale. Govore o **LJUDIMA** koji su zgrade osmislili i sagradili. Po licima zgrada pamte se njihovi vlasnici, korisnici i stanari.

Svojim licem zgrade odolevaju vremenu i **prkose zaboravu, zauvek se protiveći bezličnosti.**

LICA ZGRADA SE VIDE I **ZATVORENIH OČJU** – LICA SU TU DA OSTANU I KAD POGLEDI PRESTANU.

MI KREIRAMO TA LICA. Mi stvaramo **PRIZORE** za pamćenje, **RAZLOGE** za gledanje, **POVODE** za divljenje.

Mi onome svemu što je unutra pomažemo da se pokaže spolja. **I DA TRAJE, KOLIKO GOD MU VEČNOST DAJE.**

MI TRUDOM DAJEMO SMISAO DA BI SE VIDELA ZAMISAO, MI POZNAJEMO POSAO DA BI SE PREPOZNALA IDEJA, NAŠIM RADOM NASTAJE ONO ŠTO DUGO OSTAJE. NAŠA UMEŠNOST OMOGUĆAVA DA SE SRETNU IZGRADNJA I UMETNOST. SVE ŠTO ČINIMO JE ZBOG TOGA DA SAMO JEDNO UČINIMO:

LICA,
bez kojih
nema
kvartova
ni ulica.

Mi smo



ARMONT^{SP}

Mi gradimo
LICA ZGRADA.



SADRŽAJ

CONTENTS

O Nama / About Us	6	Metro HoReCa, Beograd / Metro HoReCa, Belgrade	42	Tempo C&C, Kraljevo / Tempo C&C, Kraljevo	82	Gradili smo i... / We Have Built...	
Projekti / Projects		Bosch, Pećinci / Bosch, Pecinci	44	Izoterm Plama, Indija / Izoterm Plama, Indjija.	83	Nelt, Dobanovci / Nelt, Dobanovci	102
The Chedi Hotel, Luštica Bay / The Chedi Hotel, Lustica Bay	10	Maxi, Smederevska Palanka / Maxi, Smederevska Palanka	46	Tc Delta City, Podgorica / Tc Delta City, Podgorica	84	Fiat Srbija, Kragujevac / Fiat Serbia, Kragujevac	102
West 65, Novi Beograd / West 65, New Belgrade	12	Dunkermotoren, Subotica / Dunkermotoren, Subotica	48	Tc Delta City, Novi Beograd / Tc Delta City, New Belgrade	86	Vode Vojvodine, Novi Sad / Vode Vojvodine, Novi Sad	102
Belgrade Office Park, Novi Beograd / Belgrade Office Park, New Belgrade	14	Muehlbauer, Stara Pazova / Muehlbauer, Stara Pazova	50	Nis Petrol, Mali Požarevac / Nis Petrol, Mali Pozarevac	87	Maxi, Kruševac / Maxi, Krusevac	103
Shoppi, Borča / Shoppi, Borca	16	Big Cee, Novi Sad / Big Cee, Novi Sad	52	Nis Petrol, Šabac / Nis Petrol, Sabac	88	Maxi, Pančevo / Maxi, Pancevo	103
McDonald's, Borča / McDonald's, Borca.	18	Stambeno-Poslovni Objekat, Beograd / Business-Residential Building, Belgrade	54	Nis Petrol, Bačka Topola / Nis Petrol, Backa Topola	88	Maxi, Vršac / Maxi, Vrsac	103
Stambeni Objekat, Beograd / Residential Building, Belgrade	20	Src Bazen Prozivka, Subotica / Src Swimming Pool Prozivka, Subotica	56	Nis Petrol, Smederevo / Nis Petrol, Smederevo	89	Tempo C&C, Beograd / Tempo C&C, Belgrade	104
Stambeni Objekat, Beograd / Residential Building, Belgrade	22	Falke Serbia, Leskovac / Falke Serbia, Leskovac	57	Nis Petrol, Loznica / Nis Petrol, Loznica.	89	Tempo C&C, Novi Sad / Tempo C&C, Novi Sad	104
Hotel Toyoko Inn, Frankfurt / Hotel Toyoko Inn, Frankfurt	23	Shinwon, Niš / Shinwon, Nis	58	Maxi Supermarket, Podgorica / Maxi Supermarket, Podgorica	90	Tempo C&C, Niš / Tempo C&C, Nis	104
Vinarija Toplički Vinogradi, Prokuplje / Winery Toplicki Vinogradi, Prokuplje.	24	Metro C&C, Beograd / Metro C&C, Belgrade	60	Roda C&C, Zemun / Roda C&C, Zemun	91	Honda Auto centar, Novi Beograd / Honda Auto Center, New Belgrade	105
Swarovski, Subotica / Swarovski, Subotica.	26	Yura Corporation, Leskovac / Yura Corporation, Leskovac	62	Valy, Valjevo / Valy, Valjevo	92	Voda Voda, Banja Vrujci / Voda Voda, Banja Vrujci	105
Aktivhaus, Frankfurt / Aktivhaus, Frankfurt	28	Norma Group, Subotica / Norma Group, Subotica	64	Valy, Loznica / Valy, Loznica.	92	Tpc Blok 70, Beograd / Tpc Blok 70, Belgrade	105
Streit Nova, Stara Pazova / Streit Nova, Stara Pazova	29	Polimark, Beograd / Polimark, Belgrade	66	Societe Generale, Beograd / Societe Generale, Belgrade.	93	Projektovanje / Design	108
Vibac, Jagodina / Vibac, Jagodina	30	Julia Mlin, Feketić / Julia Mill, Feketic	68	Simplex, Temerin / Simplex, Temerin.	93	Proizvodnja / Production	110
McDonald's, Novi Sad / McDonald's, Novi Sad	31	Nacionalna Kuća Fudbala Fss, Stara Pazova / National House Of Football Fss, Stara Pazova	70	Krovni Svetlarnici I Kupole, Lamilux Ci Sistem / Daylight elements, Lamilux Ci system		Montaža / Installing	112
Mokrin House, Mokrin / Mokrin House, Mokrin	32	Metro C&C, Subotica / Metro C&C, Subotica	72	Krovne svetlosne kupole F100 / Roof light domes F100	96	Reference / References	114
Sika, Šimanovci / Sika, Simanovci	34	Oblasna Kontrola Leta, Aerodrom Nikola Tesla - Beograd / Area Flight Control, Airport Nikola Tesla - Belgrade	73	Krovne svetlosne trake Rooflight B / Continuous Rooflight B	97	Naši partneri / Our partners	118
DIS, Vršac / DIS, Vrsac.	36	Mika Ps, Dobanovci / Mika Ps, Dobanovci	74	Sistemi za odvođenje dima i toplote / Smoke and heat exhaust-ventilation systems	98		
Grindex, Kikinda / Grindex, Kikinda	37	Kika, Beograd / Kika, Beograd	75	CI SYSTEM PR60 - Arhitektura stakla / CI SYSTEM PR60 - Architecture of glass	99		
Mikroelektronika, Zemun / Mikroelektronika, Zemun	38	Banini, Kikinda / Banini, Kikinda	76				
Netiks, Beograd / Netiks, Belgrade	40	Mr. Bricolage, Niš / Mr. Bricolage, Nis	78				
		BMW Auto centar, Beograd / BMW Auto Center, Belgrade	80				
		Tempo C&C, Čačak / Tempo C&C, Cacak	81				



O NAMA

ABOUT US

Mi smo **ARMONT SP.**

Mi pravimo lica zgrada.

To činimo tako što projektujemo, proizvodimo i montiramo fasadne obloge različitih tipova, za objekte poput onih koje ćete videti u ovom katalogu.

Posedujemo više od 10 godina iskustva u ovom poslu, radimo i poslujemo unapređujući svoja znanja i veštine. Brojni uspešni projekti u zemlji i inostranstvu učinili su da naša kompanija postane sinonim za inovativna i efikasna rešenja u oblasti inženjeringa i montaže aluminijumskih, staklenih i čeličnih konstrukcija.

Veliki broj stambenih i poslovnih zgrada, trgovinski, industrijski i sportski centri nose potpis naših projektanata, arhitekata i montera. Kvalitet, efikasnost, sigurnost i odgovornost su četiri ključne reči naše poslovne filozofije. Time odavno, stalno i iznova zaslužujemo dugoročno poverenje naših klijenata.

Reputaciju štitimo novim uspesima i ambicioznim projektima, ulaganjem u najsavremeniju tehnologiju i nova znanja. Pouzdan smo partner u svim projektima, i velikim i malim. Uz stalnu saradnju sa klijentom stvaramo moderna, kreativna i funkcionalna rešenja.

Pratimo svetske trendove i neprekidno usavršavamo znanja i tehnike za izradu i postavljanje aluminijumskih, staklenih i ventilisanih fasada (Trespa, Fundermax, Eternit, Alucobond, Alubond), ALU stolarije i drugih pratećih elemenata. Mi uvek učimo da bi bolje radili i radimo da bi stalno napredovali.

U svim fazama projekta, od projektovanja do montaže, naš dugogodišnji i stabilni tim iskusnih i posvećenih profesionalaca stoji vam na raspolaganju. Mi verujemo da svi uspešni projekti nastaju sa najvažnijim razlogom – zbog pouzdanih partnera koji međusobno dele iste vrednosti! Ostajući verni našem poslovnom kodeksu, sa optimizmom gledamo u buduće projekte. I radujemo se svakom novom njihovom početku.

Gradeći zajedno lica zgrada – gradimo i naš zajednički uspeh!

Uvek ste dobro došli.

ARMONT SP

We are **ARMONT SP.**

We create faces of buildings.

We designing, produce and install facade claddings of different types, for objects like those you will see in this catalog.

More than 10 years of experience in this business, we choose to work and do business by improving our knowledge and skills. Numerous successful projects in the country and abroad have made our company a synonym for innovative and efficient solutions in the field of engineering and assembly of aluminum, glass and steel constructions.

A large number of residential and office buildings, commercial, industrial and sports centers are signed by our designers, architects and installers. Quality, efficiency, safety and accountability are the four key words of our business philosophy. Over the years, we constantly and repeatedly deserve our clients' long-term trust.

We protect our reputation with new successes and ambitious projects, investing in state-of-the-art technology and new knowledge. We are a reliable partner in all projects, both big and small. With constant cooperation with the client, we create modern, creative and functional solutions.

We follow the global trends and continuously improve the knowledge and techniques for the design and installation of aluminum, glass and ventilated façades (Trespa, Fundermax, Eternit, Alucobond, Alubond), ALU carpentry and other supporting elements. We always learn to work better and to keep on progressing.

At all stages of the project, from design to assembly, our long-standing and stable team of experienced and dedicated professionals stands at your disposal. We believe that all successful projects come with the most important reason - because of trusted partners who share the same value with each other! Staying true to our business code, we are optimistic about future projects. And we look forward to every new beginning.

Building together faces of buildings - we are building our mutual success!

You are always welcome.

ARMONT SP



PROJEKTI

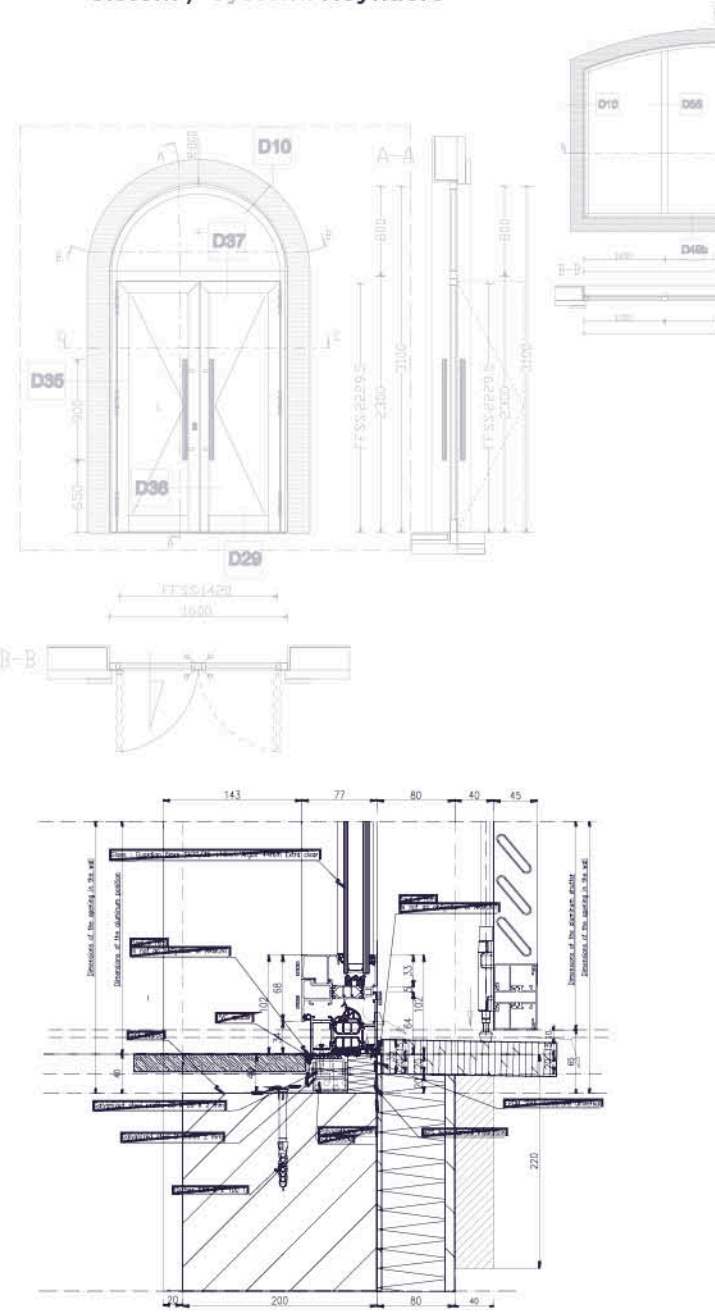
PROJECTS





Godina izgradnje / Year of build: 2017/2018
Investitor / Investor: BESIX
Projektovao / Design: Mašinoprojekt Kopriv, Beograd

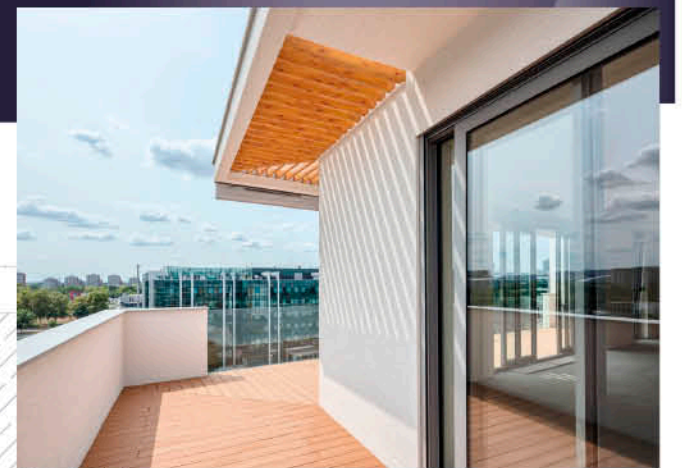
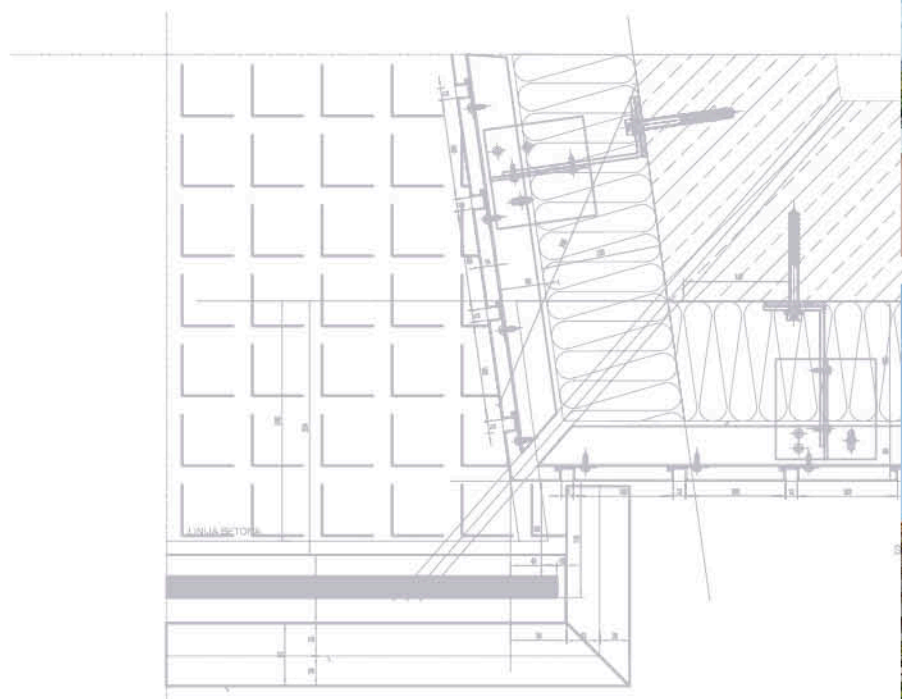
Sistem / System: Reynaers





Godina izgradnje / Year of build: 2017/2018
Investitor / Investor: PFB Properties
Projektovao / Design: PFB Design

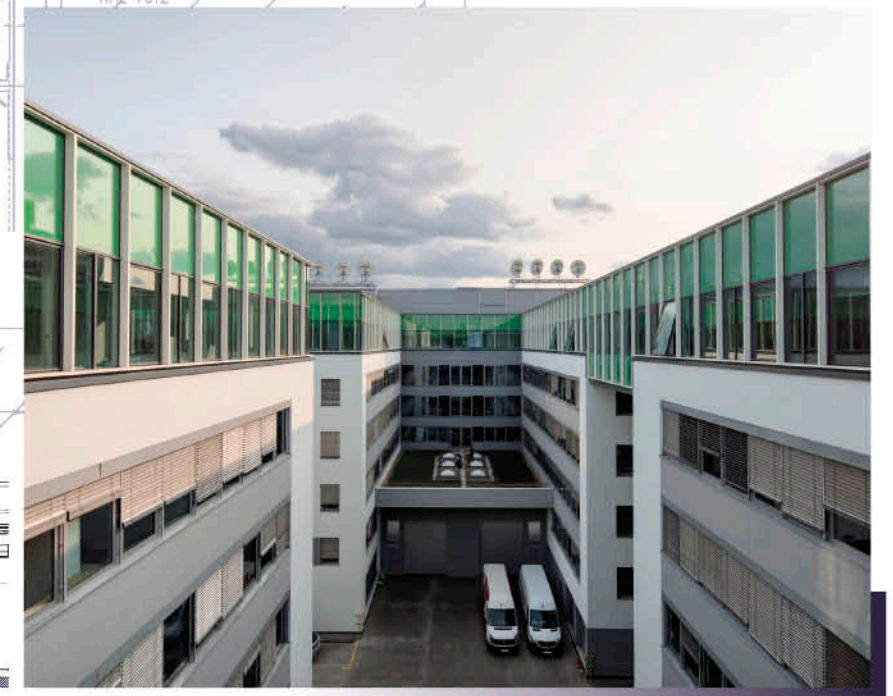
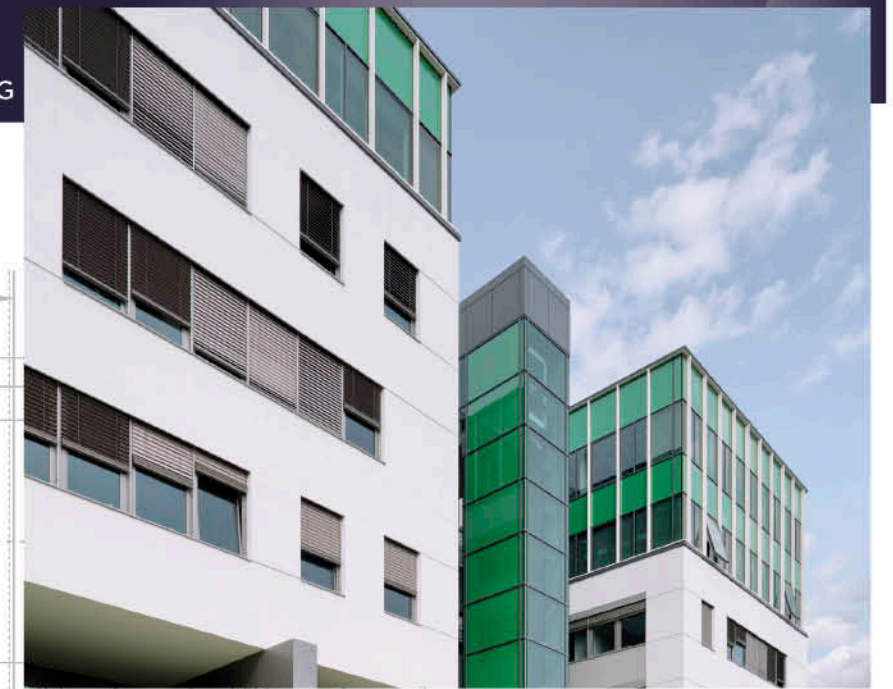
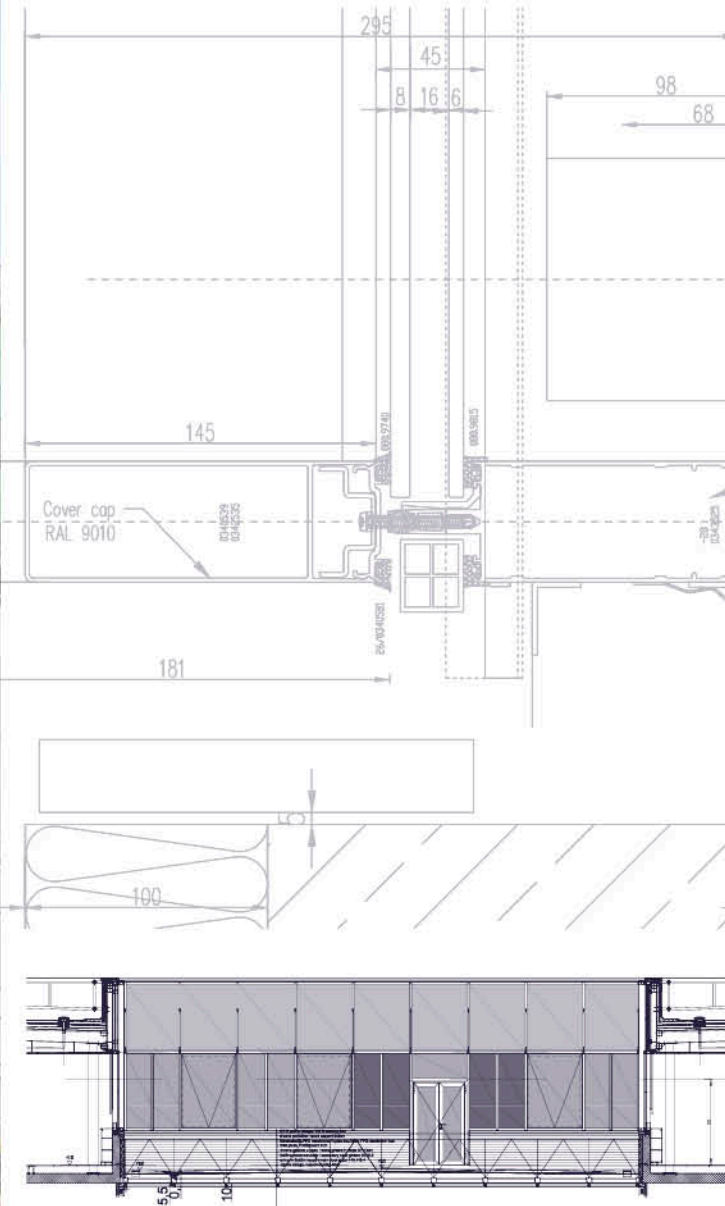
Sistem / System: Reynaers





Godina izgradnje / Year of build: 2017
Investitor / Investor: CA IMMO
Projektovao / Design: Spasoje Derajić, d.i.g./BEGING

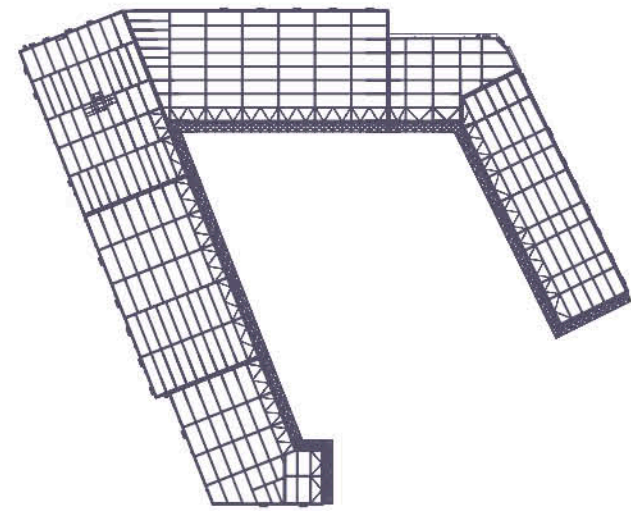
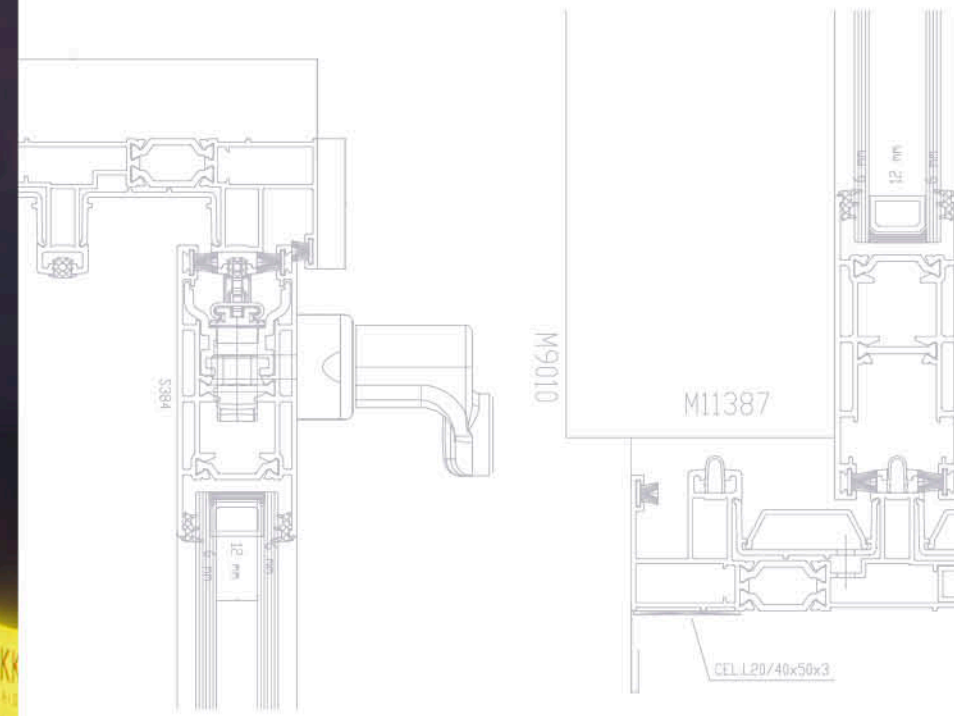
Fasada / Facade: 6.000 m²
Sistem / System: Reynaers





Godina izgradnje / Year of build: 2016
Investitor / Investor: MPC Properties
Projektovao / Design: GeoEXPERT

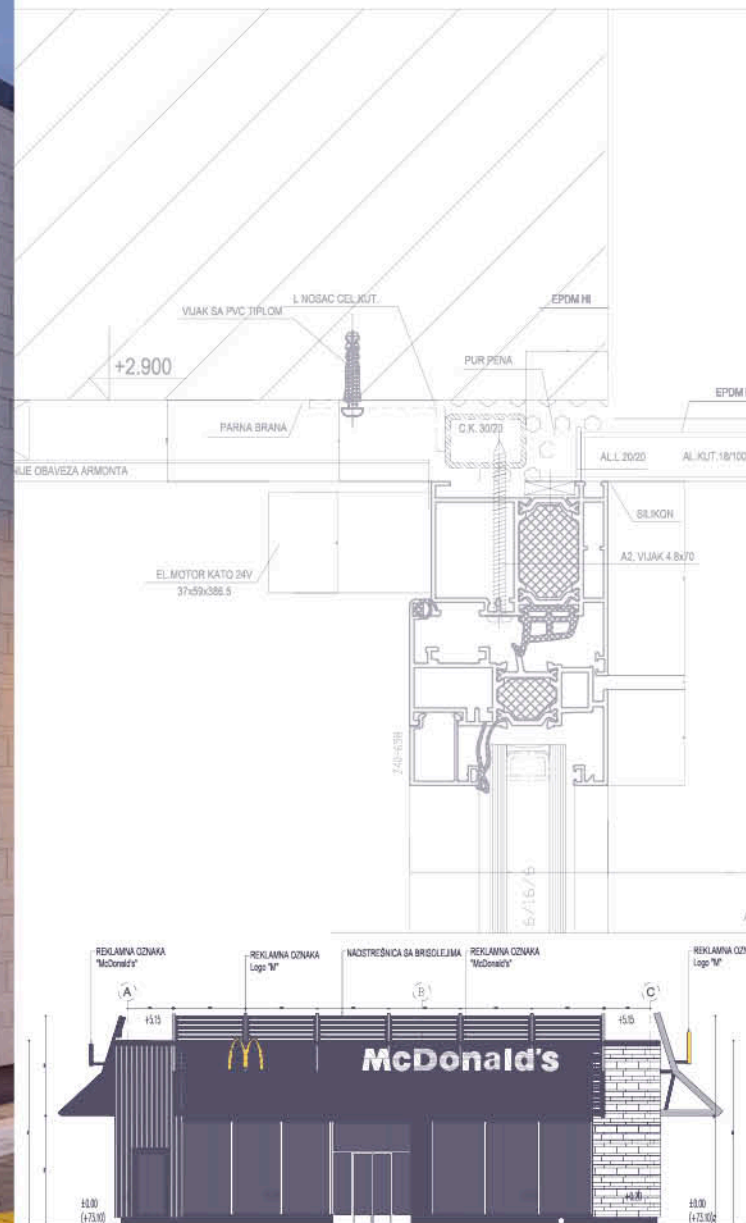
Fasada / Facade: 8.700 m²
Krov / Roof: 15.000 m²





Godina izgradnje / Year of build: 2016
 Investitor / Investor: MPC Properties
 Projektovao / Design: D.A. Dizajnarhitektura

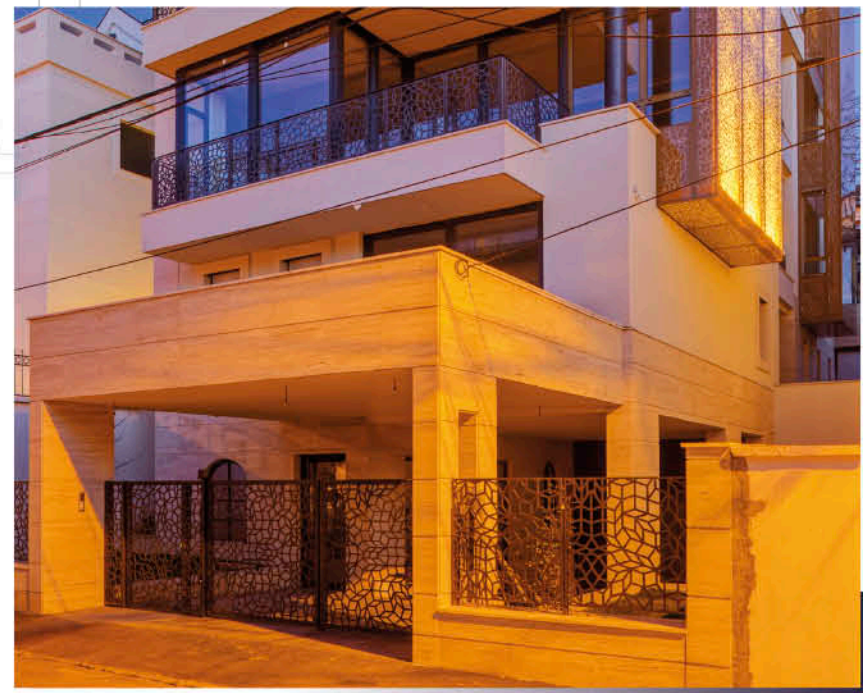
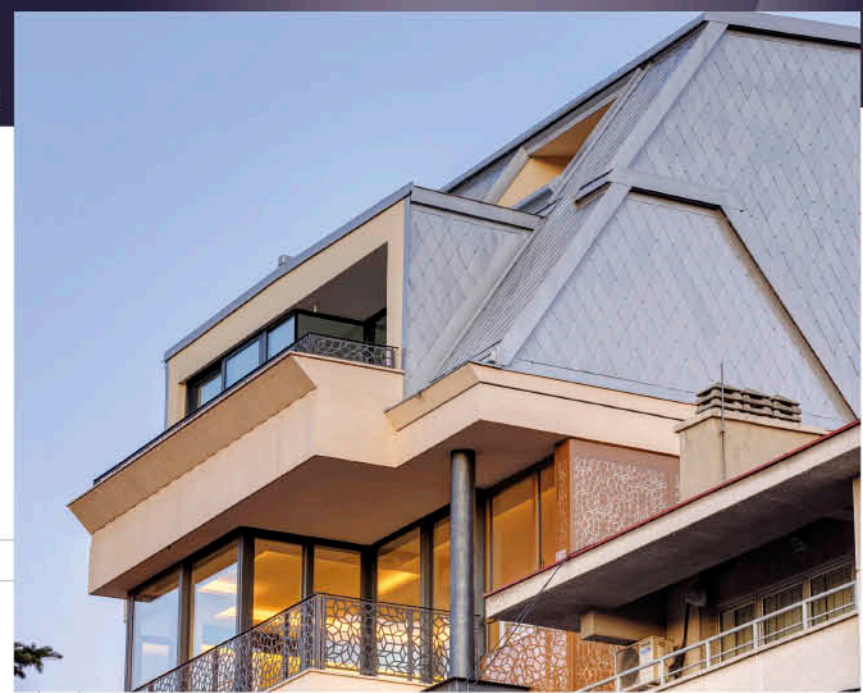
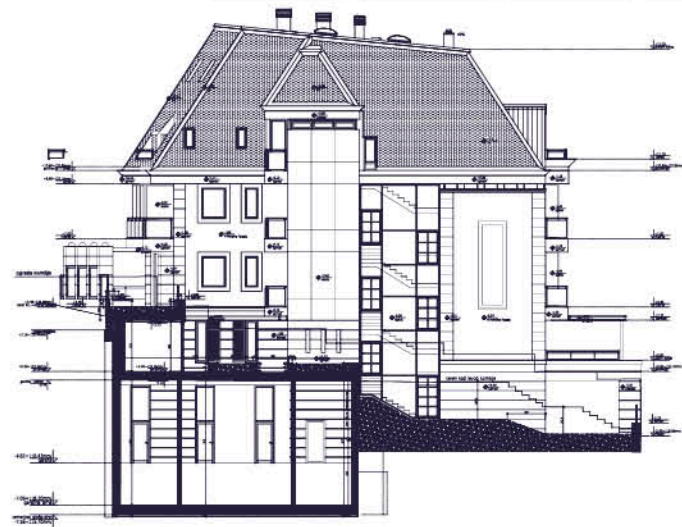
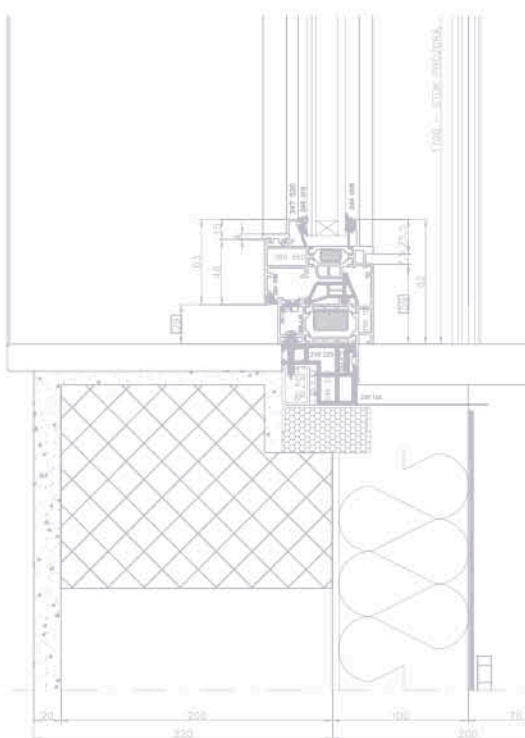
Sistem / System: Schüco





Godina izgradnje / Year of build: 2016
Investitor / Investor: Privatni
Projektovao / Design: Vanja Cerović, d.i.a. / GEDEON

Sistem / System: Schüco

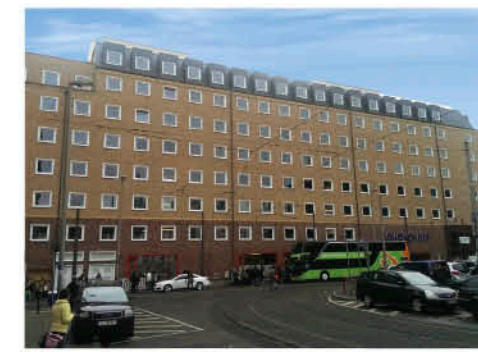
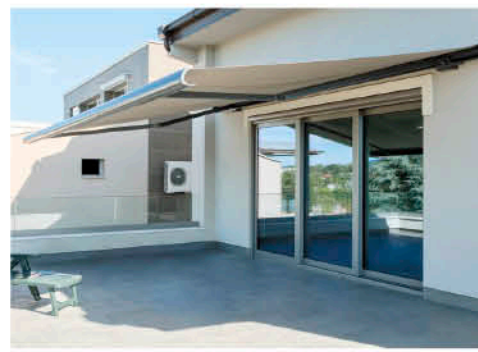




Godina izgradnje / Year of build: 2016
Investitor / Investor: Privatni
Sistem / System: Schüco



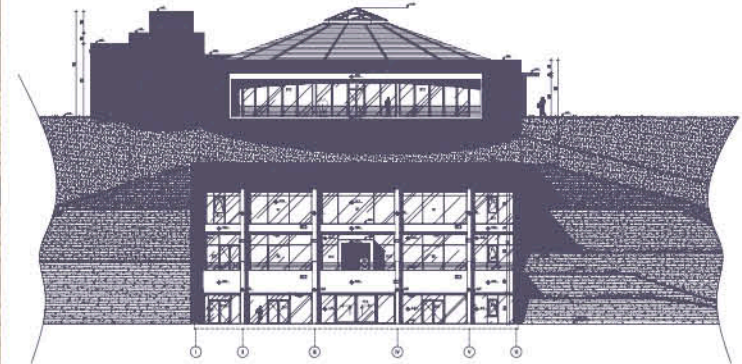
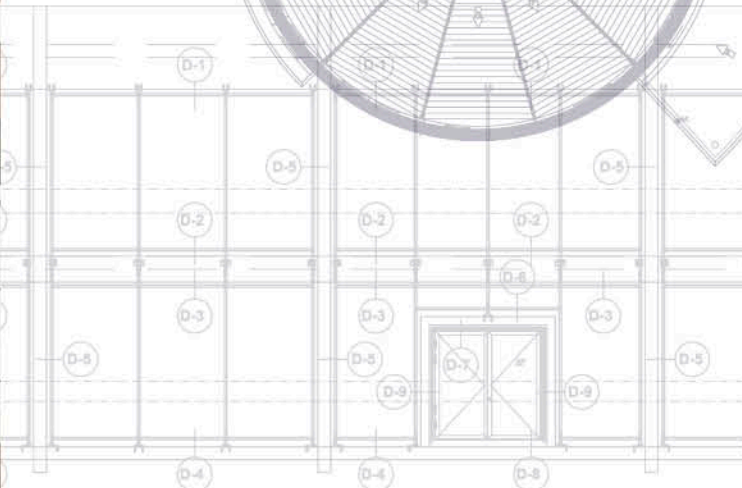
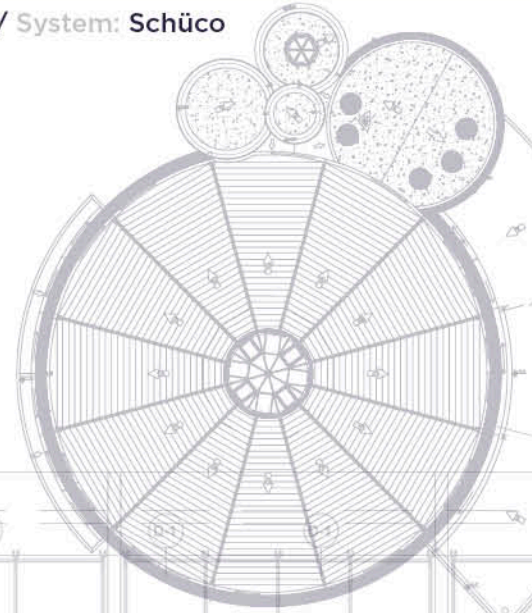
Godina izgradnje / Year of build: 2016
Investitor / Investor: Toyoko
Sistem / System: Schüco





Godina izgradnje / Year of build: 2015
Investitor / Investor: Toplički vinogradi
Projektovao / Design: Dejan Stanojević, d.i.a./ DAAM

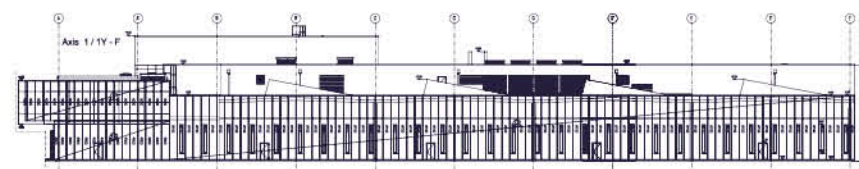
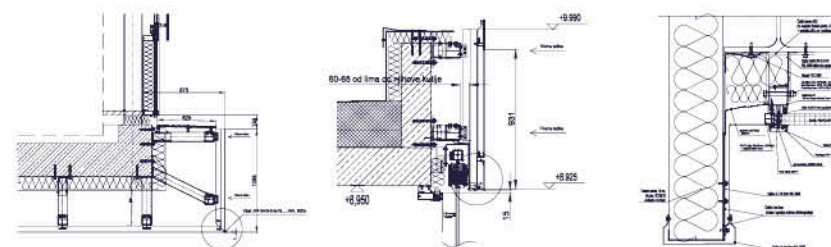
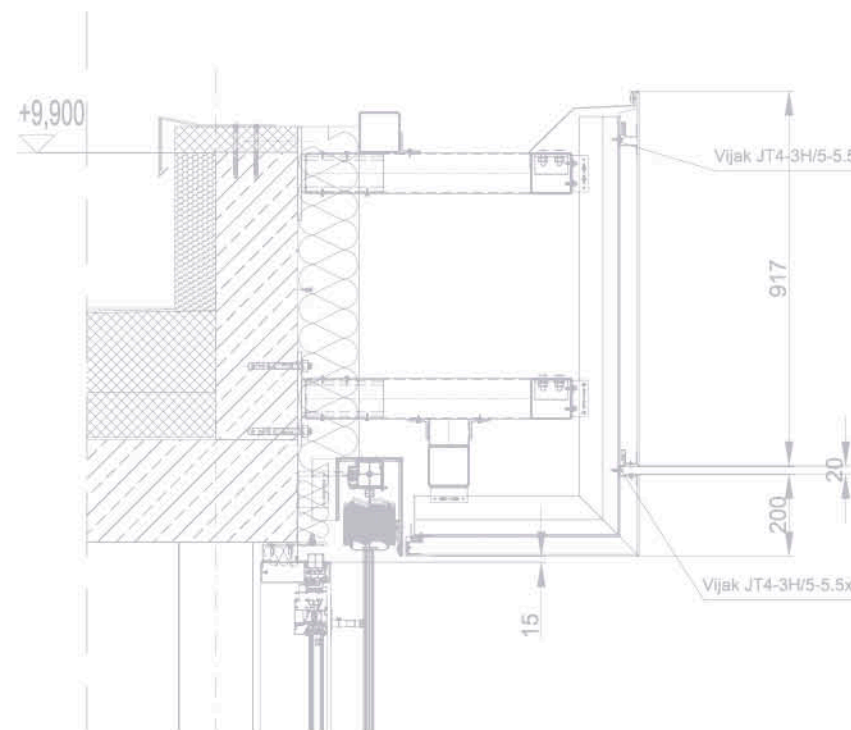
Sistem / System: Schüco



SWAROVSKI

Godina izgradnje / Year of build: 2015
Investitor / Investor: Swarovski
Projektovao / Design: APM Austria

Fasada / Facade: 5.500 m²
Krov / Roof: 12.000 m²
Sistem / System: Schüco; Titan-Zinc

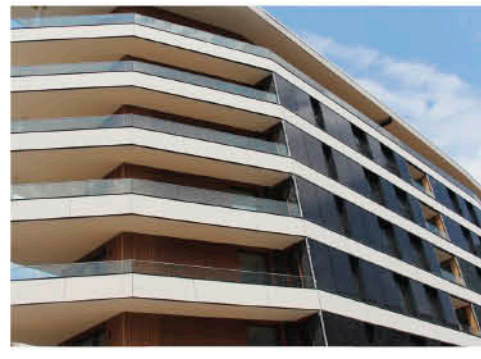




Godina izgradnje / **Year of build:** 2015
Investitor / **Investor:** Glas Wagener

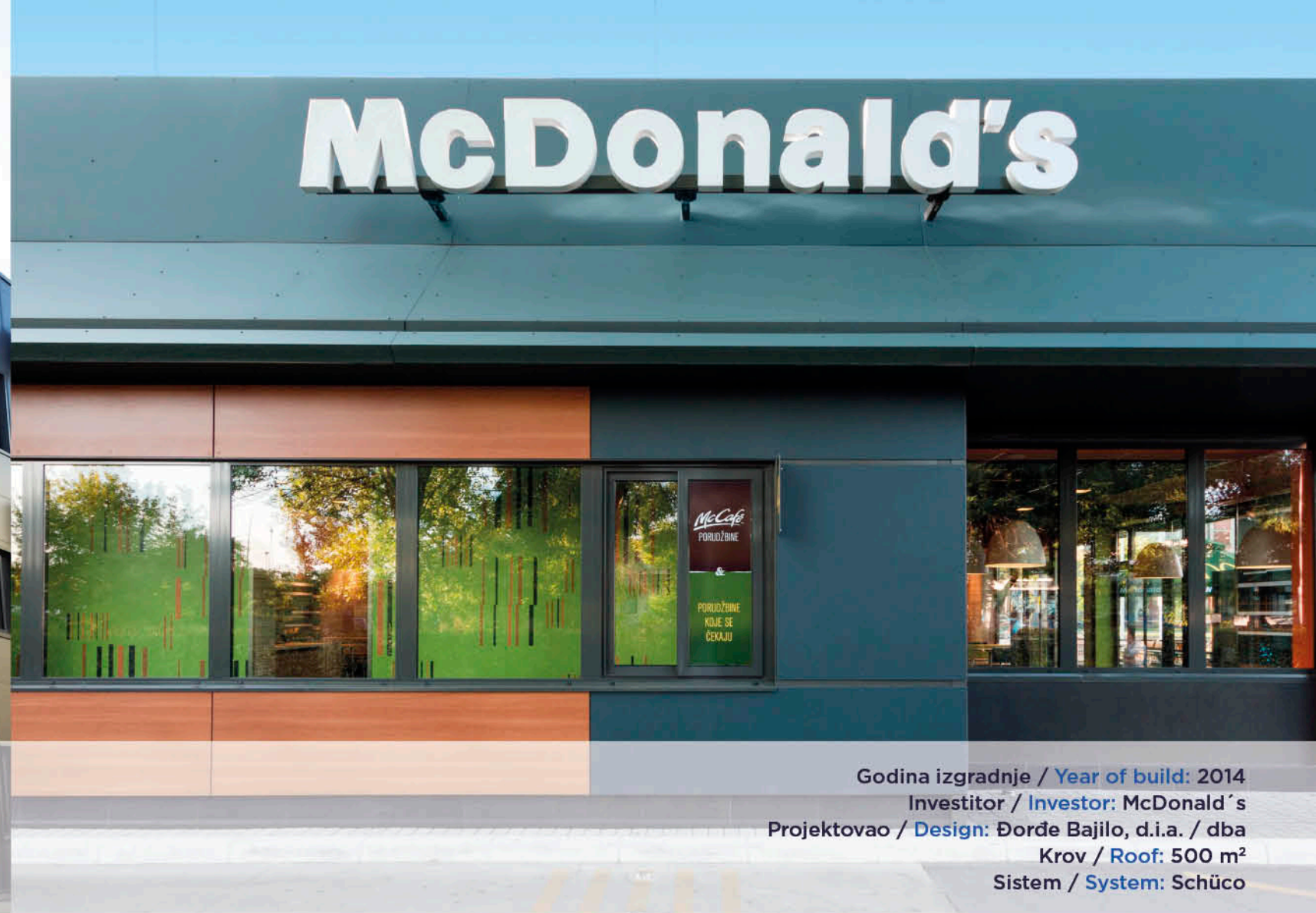


Godina izgradnje / **Year of build:** 2015
Investitor / **Investor:** Streit Nova
Projektovao / **Design:** North Engineering, Subotica
Fasada / **Facade:** 4.700 m²
Krov / **Roof:** 12.400 m²

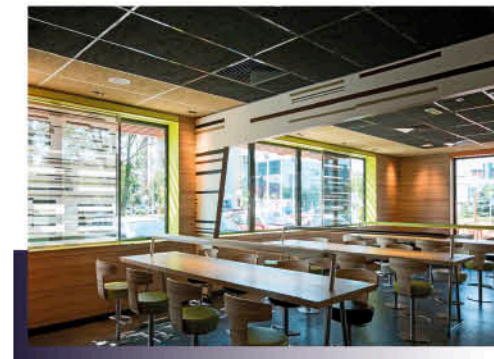




Godina izgradnje / **Year of build:** 2015
Investitor / **Investor:** Vibac
Projektovao / **Design:** Mašinoprojekt Kopriv, Beograd
Fasada / **Facade:** 51.000
Krov / **Roof:** 65.000



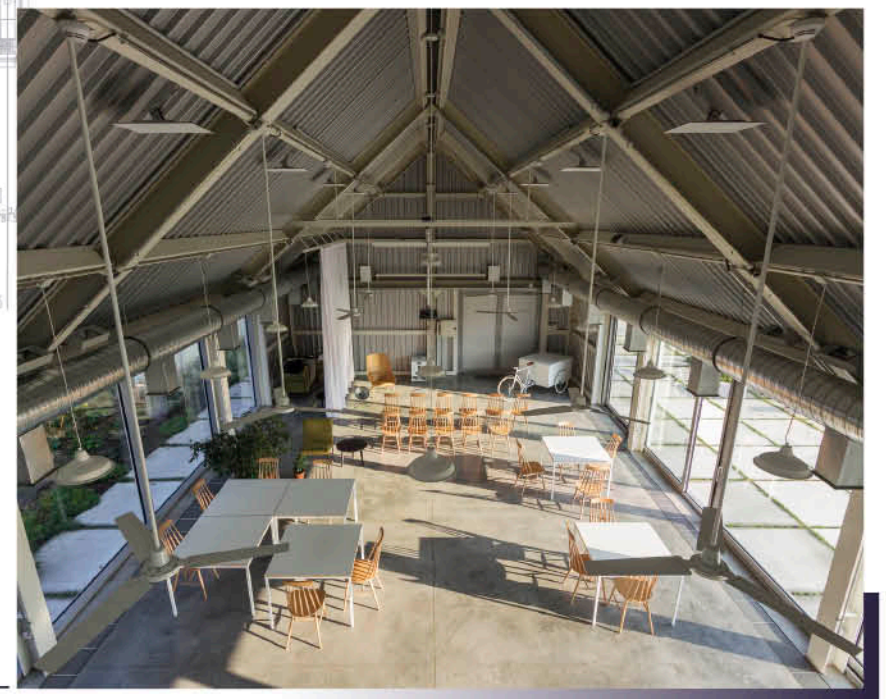
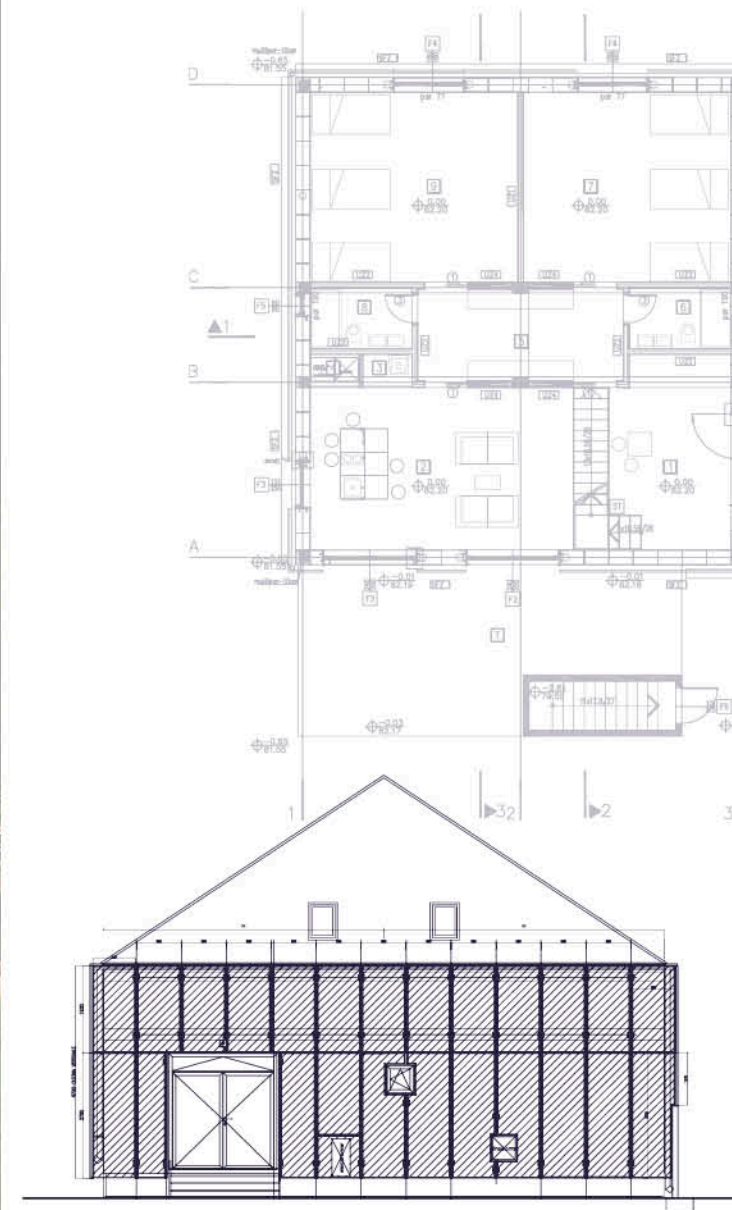
Godina izgradnje / **Year of build:** 2014
Investitor / **Investor:** McDonald's
Projektovao / **Design:** Đorđe Bajilo, d.i.a. / dba
Krov / **Roof:** 500 m²
Sistem / **System:** Schüco





Godina izgradnje / Year of build: 2014
Investitor / Investor: Terra Panonica
Projektovao / Design: Projektni biro AUTORI

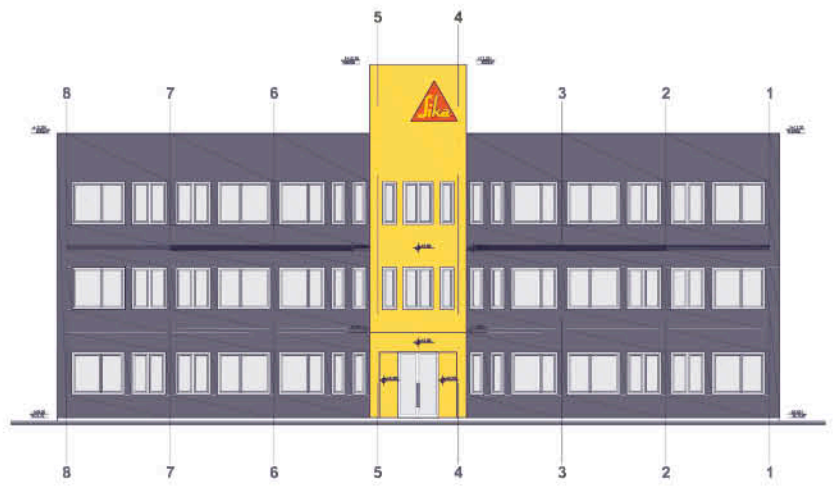
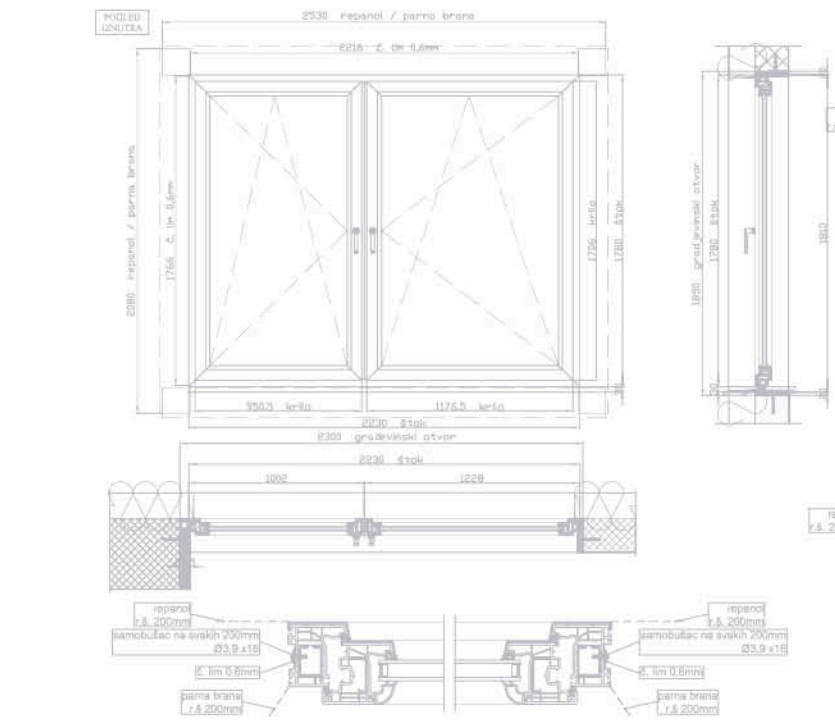
Fasada / Facade: 900 m²
Krov / Roof: 600 m²
Sistem / System: Schüco

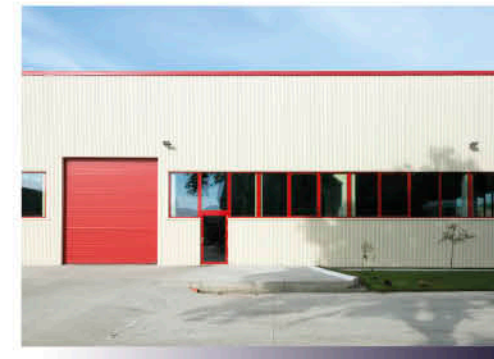




Godina izgradnje / Year of build: 2014
Investitor / Investor: SIKA Srbija
Projektovao / Design: North Engineering, Subotica

Fasada / Facade: 4.500 m²
Krov / Roof: 3.000 m²
Sistem / System: Schüco

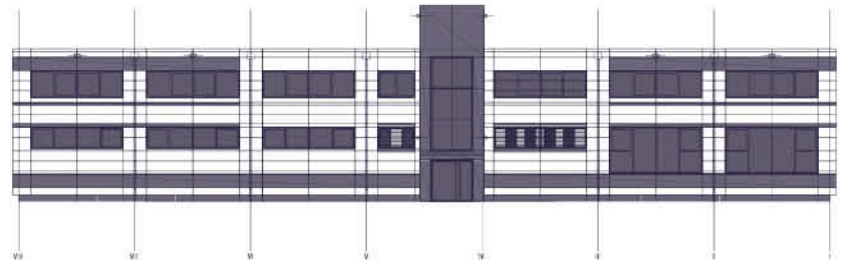
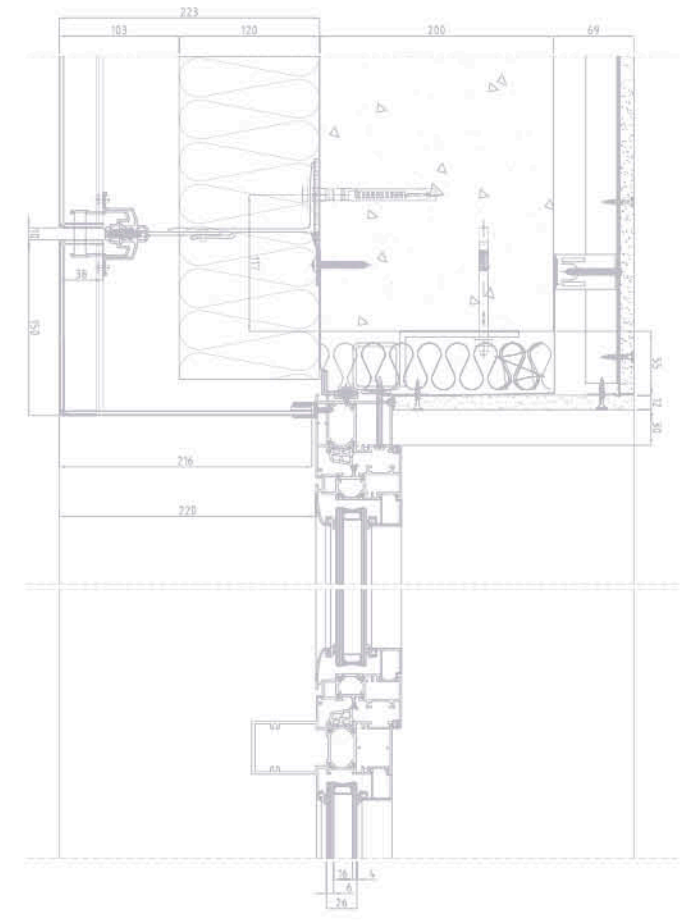






Godina izgradnje / Year of build: 2013
Investitor / Investor: Mikroelektronika
Projektovao / Design: Branka Kokotović Stančić, d.i.a.

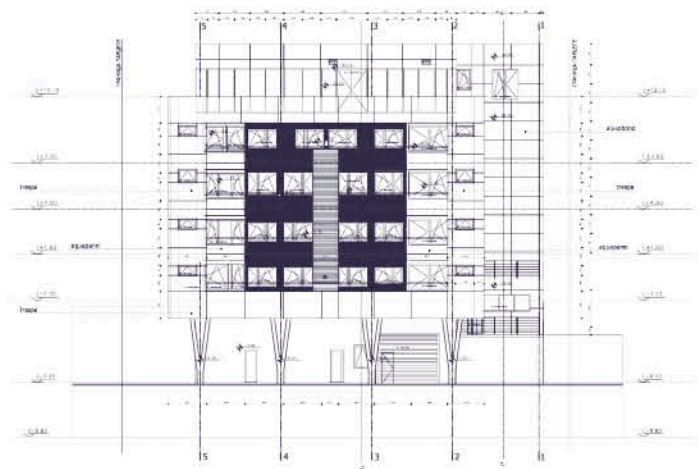
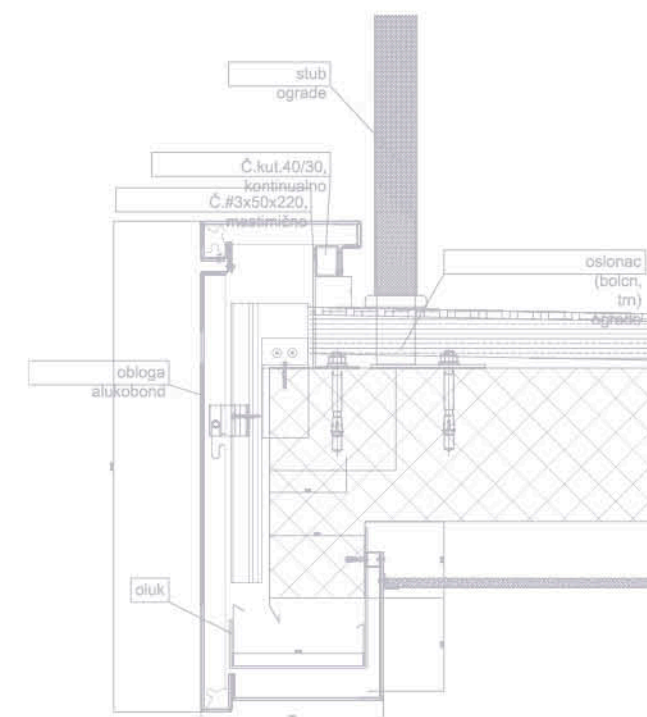
Fasada / Facade: 1.770 m²
Krov / Roof: 1.960 m²
Sistem / System: Alubond





Godina izgradnje / Year of build: 2013
Investitor / Investor: NETIX, Beograd
Projektovao / Design: Dejan Radonjić, d.i.a.

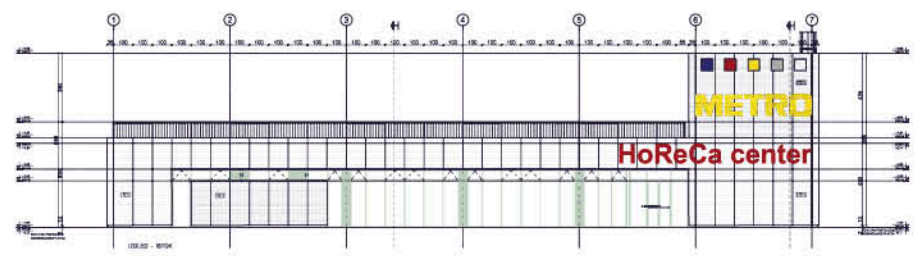
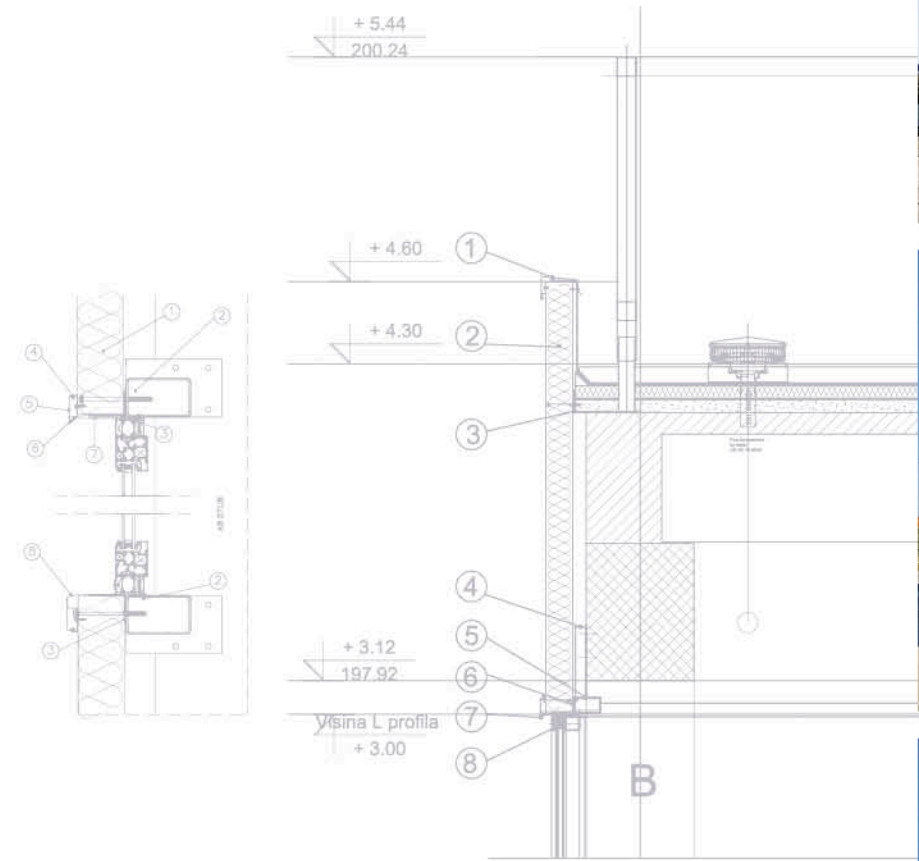
Fasada / Facade: 3.500 m²
Krov / Roof: 1.500 m²
Sistem / System: Schüco; Alubond





Godina izgradnje / Year of build: 2013
Investitor / Investor: METRO C&C
Projektovao / Design: North Engineering, Subotica

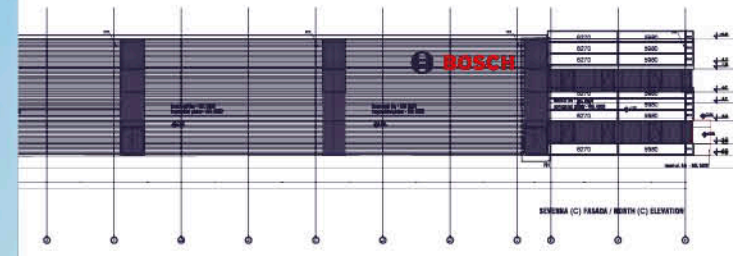
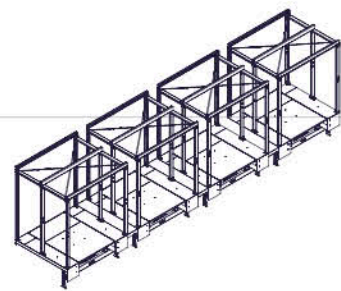
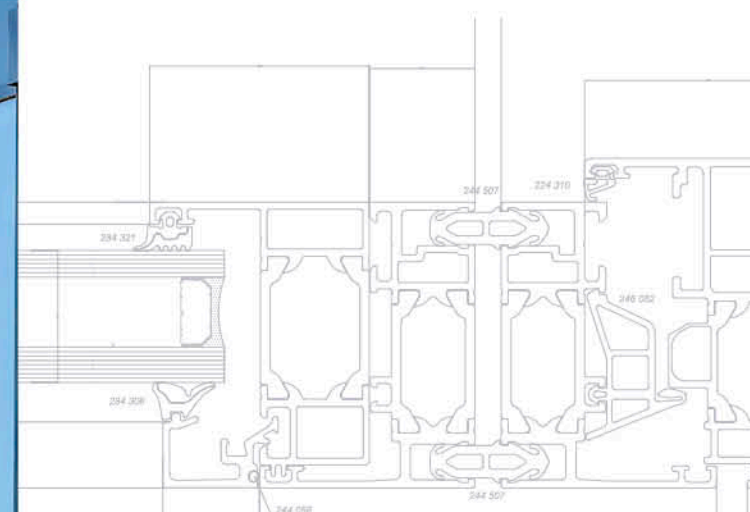
Fasada / Facade: 480 m²
Krov / Roof: 410 m²





Godina izgradnje / Year of build: 2012/2013
Investitor / Investor: ROBERT BOSCH
Projektovao / Design: Mašinoprojekt Kopriv, Beograd

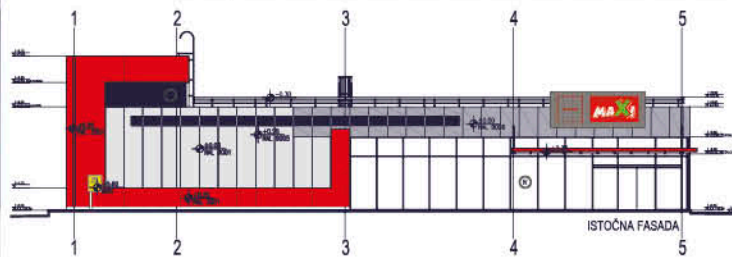
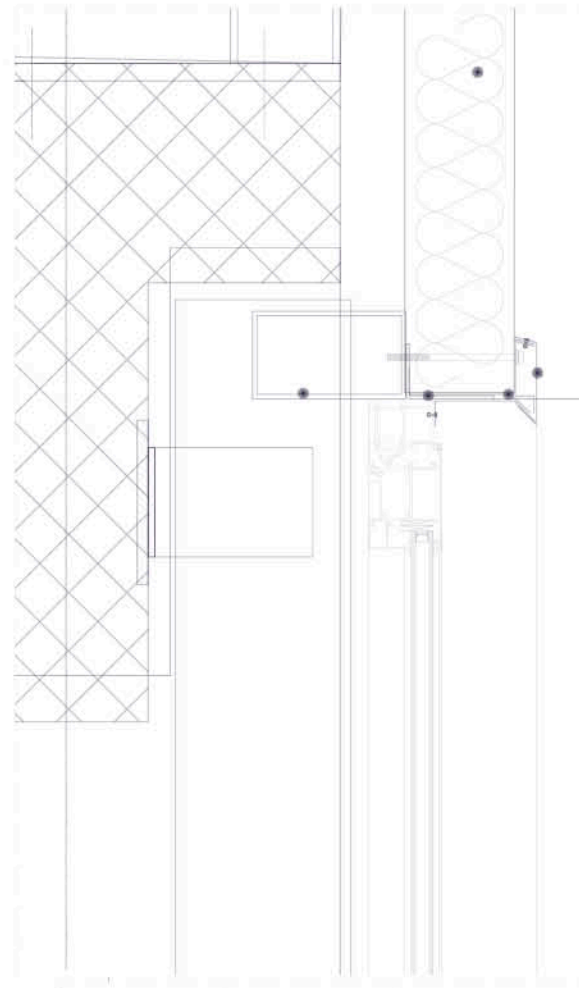
Fasada / Facade: 7.000 m²
Krov / Roof: 17.000 m²
Sistem / System: Schüco





Godina izgradnje / Year of build: 2012
Investitor / Investor: Delhaize
Projektovao / Design: North Engineering, Subotica

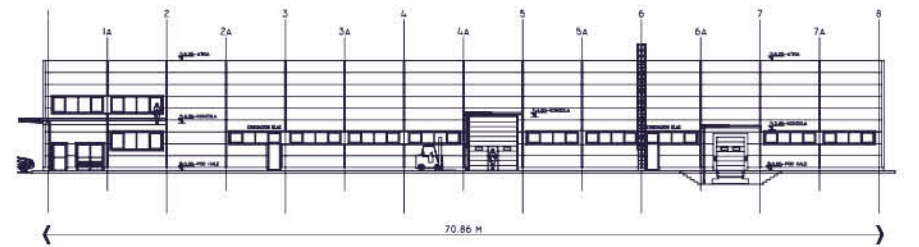
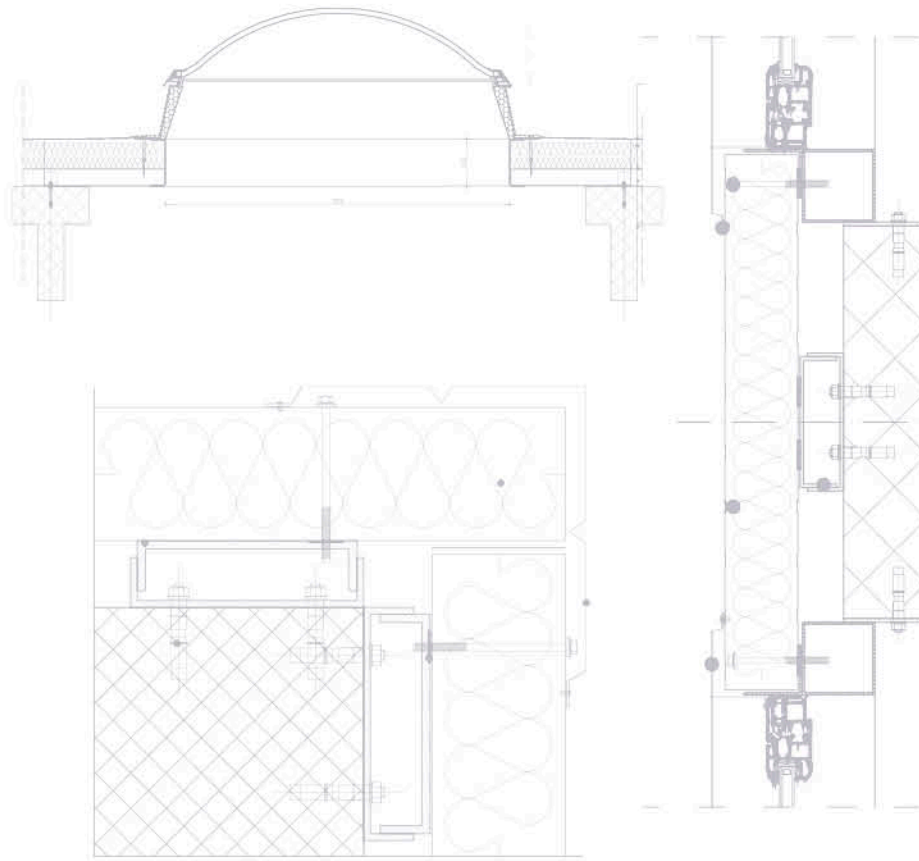
Fasada / Facade: 900 m²
Krov / Roof: 850 m²





Godina izgradnje / Year of build: 2012
Investitor / Investor: Dunkermotoren
Projektovao / Design: Support, Subotica

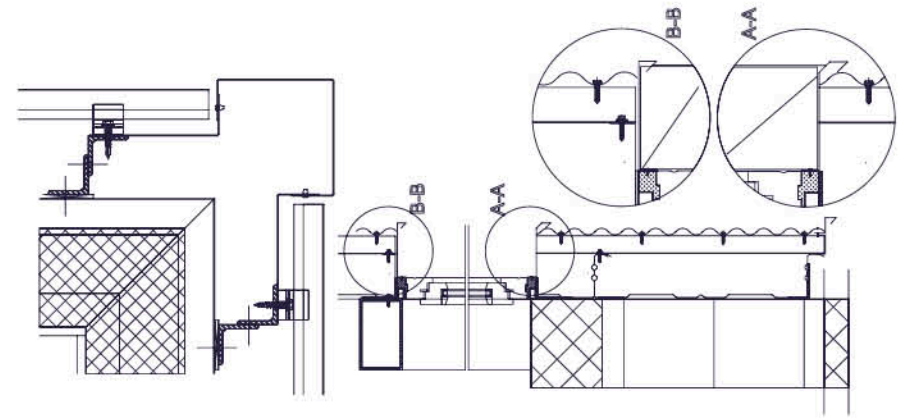
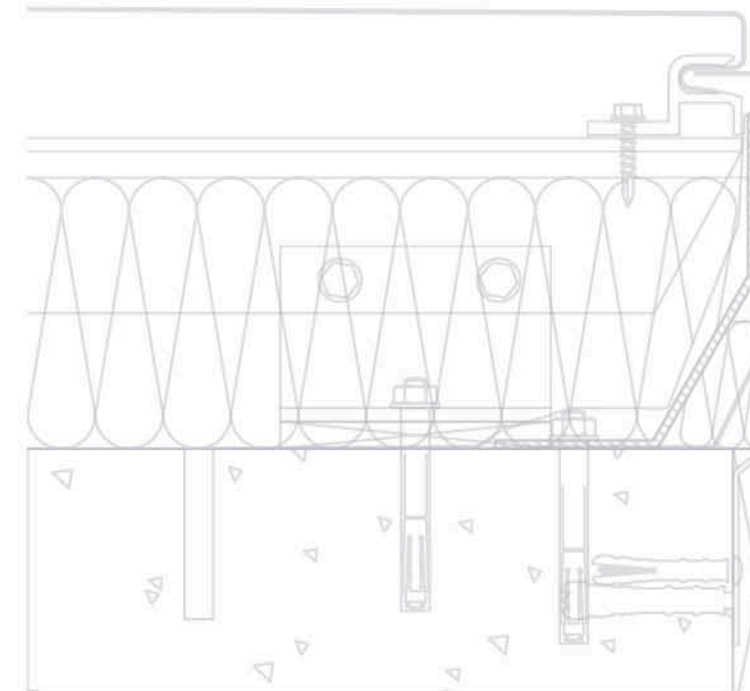
Fasada / Facade: 2.200 m²
Krov / Roof: 4.300 m²





Godina izgradnje / Year of build: 2012
Investitor / Investor: Muehlbauer
Projektovao / Design: Studio Struktura

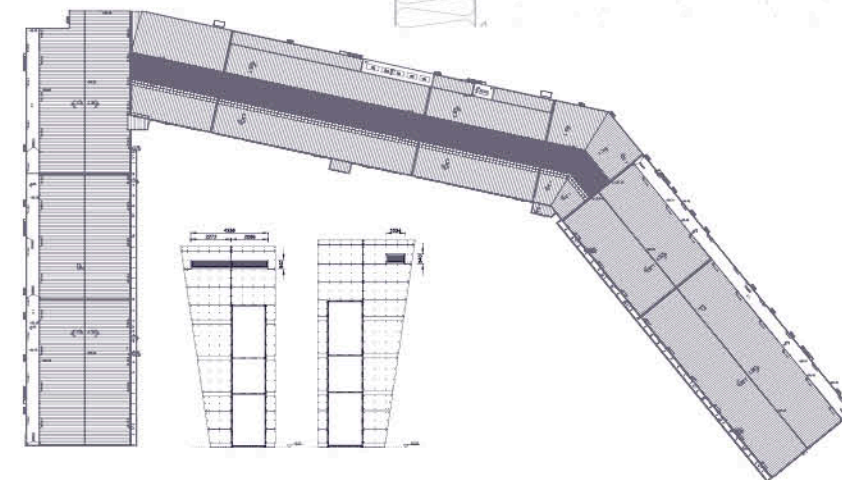
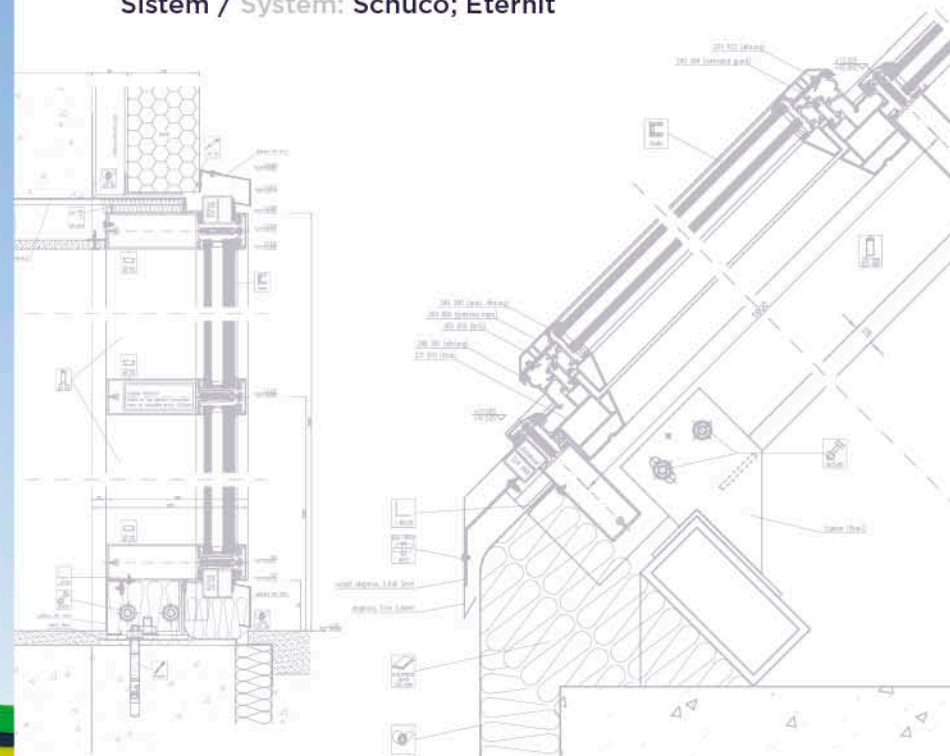
Fasada / Facade: 1.300 m²
Krov / Roof: 4.100 m²
Sistem / System: Hunter Douglas





Godina izgradnje / Year of build: 2012
Investitor / Investor: Big Cee
Projektovao / Design: D.A. Dizajnarhitektura

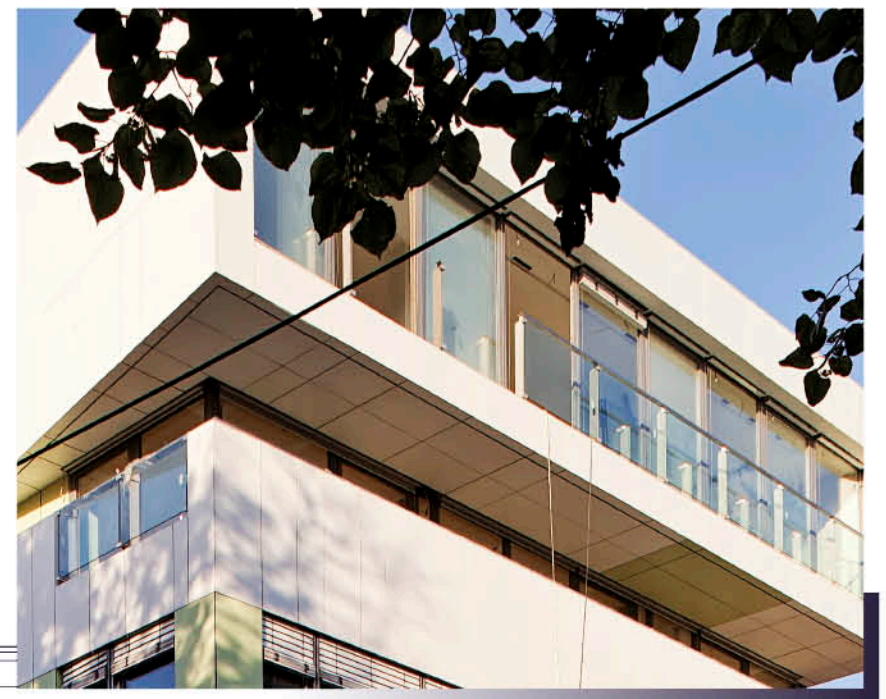
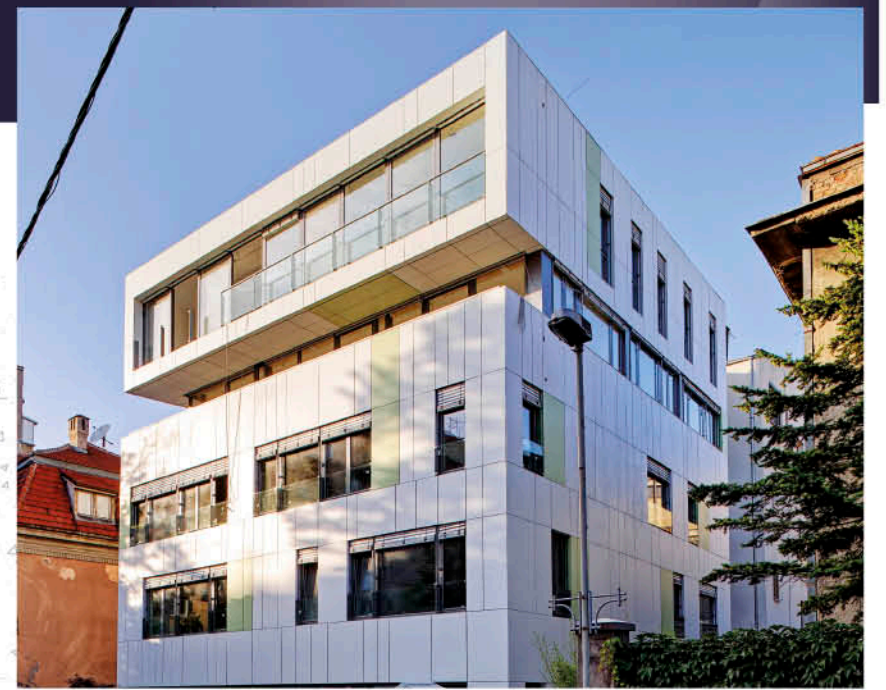
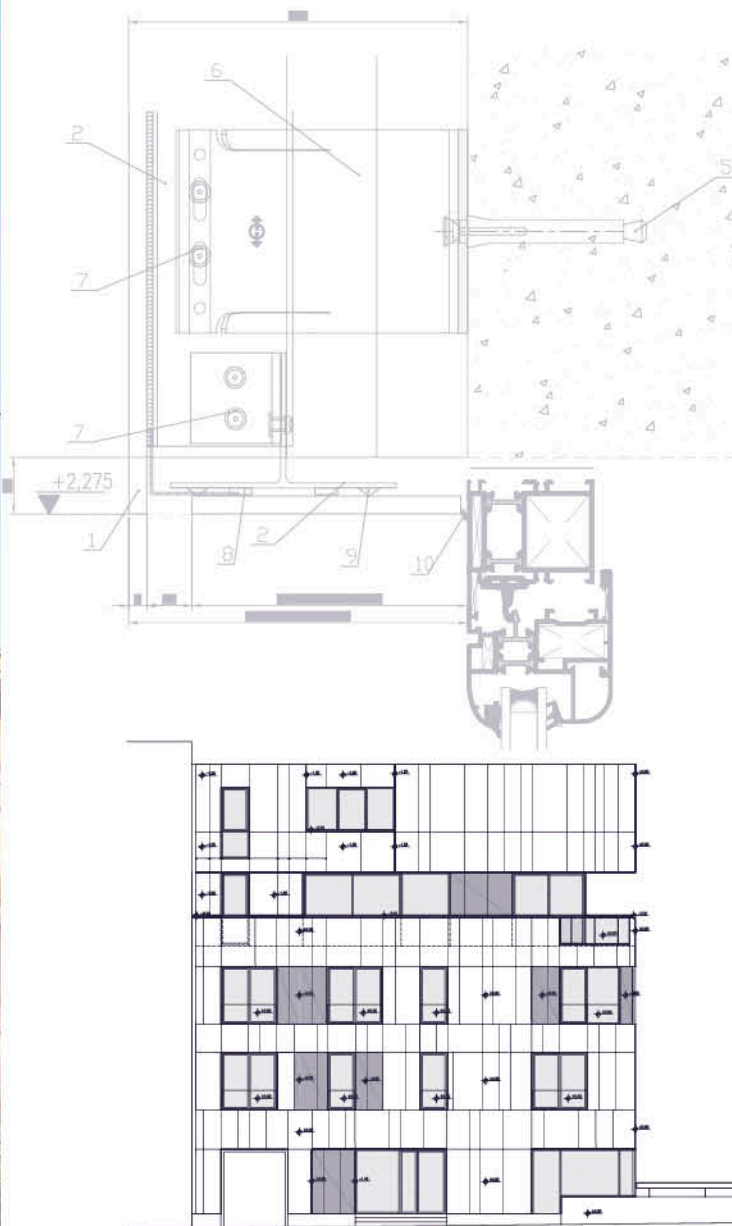
Fasada / Facade: 6.500 m²
Krov / Roof: 30.400 m²
Sistem / System: Schüco; Eternit





Godina izgradnje / Year of build: 2012
Investitor / Investor: Rudnap
Projektovao / Design: Goran Vojvodić, d.i.a.

Fasada / Facade: 800 m²
Sistem / System: Eternit

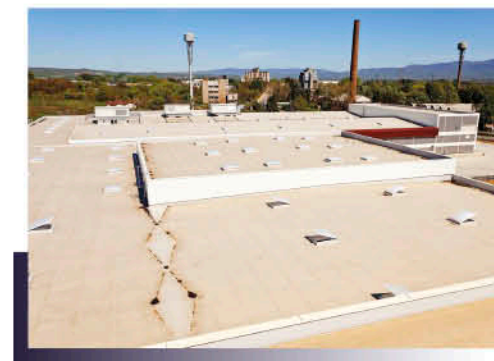




Godina izgradnje / Year of build: 2012
Investitor / Investor: Grad Subotica
Projektovao / Design: Support, Subotica
Fasada / Facade: 1.300 m²
Krov / Roof: 2.000 m²



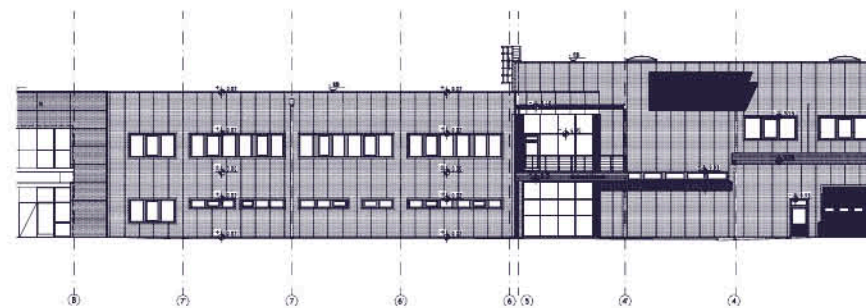
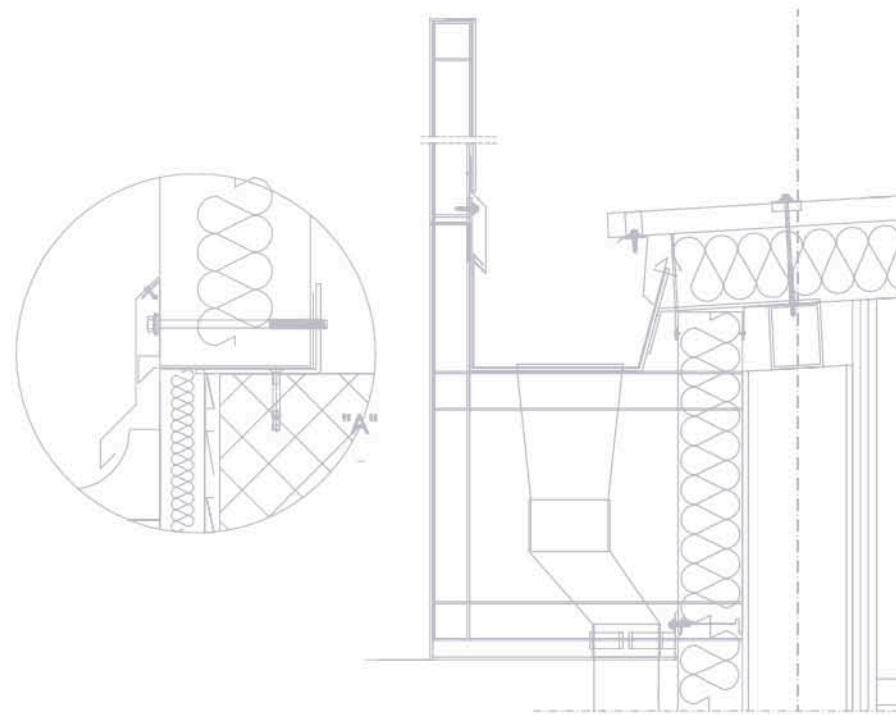
Godina izgradnje / Year of build: 2011
Investitor / Investor: Falke Serbia
Projektovao / Design: Mašinoprojekt Koprings, Beograd
Fasada / Facade: 5.500 m²
Krov / Roof: 13.000 m²





Godina izgradnje / Year of build: 2011
Investitor / Investor: Shinwon
Projektovao / Design: ABR, Niš

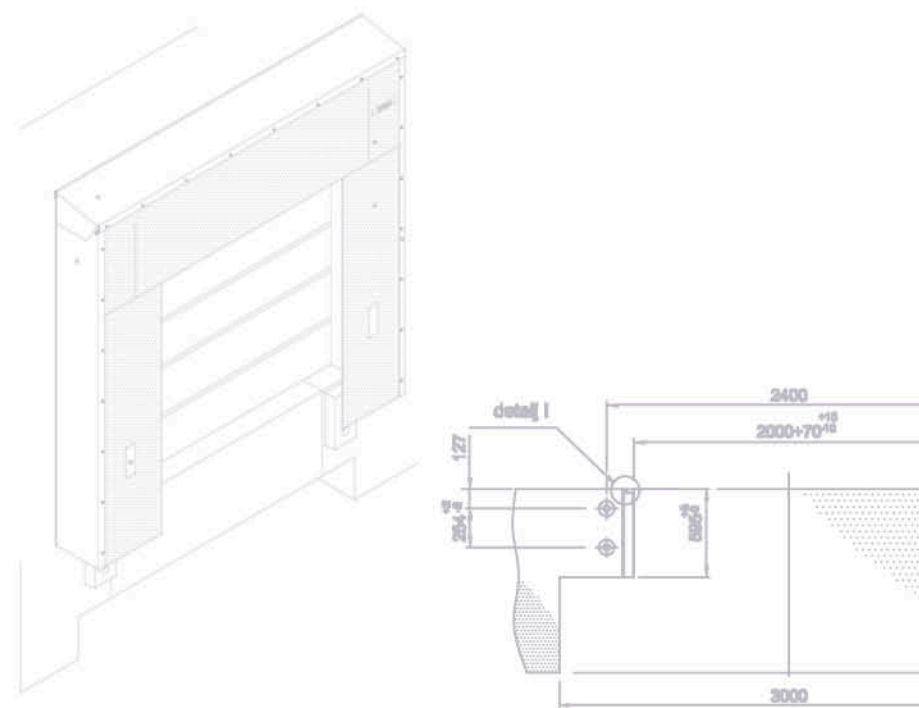
Fasada / Facade: 4.500 m²
Krov / Roof: 9.600 m²





Godina izgradnje / Year of build: 2011
Investitor / Investor: METRO C&C
Projektovao / Design: North Engineering, Subotica

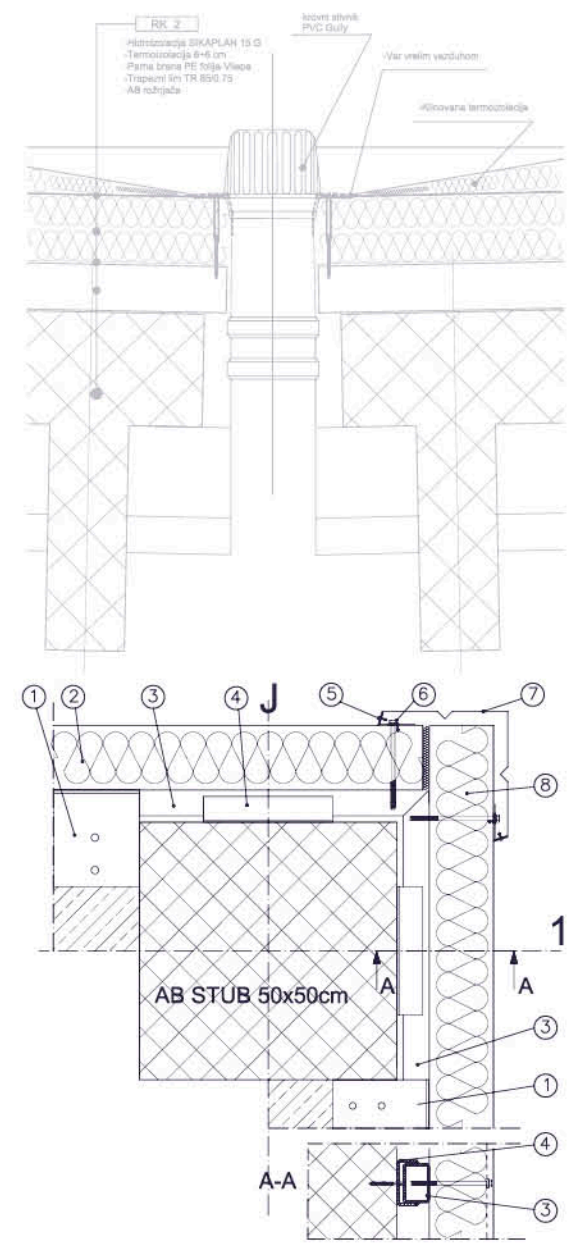
Fasada / Facade: 3.700 m²
Krov / Roof: 14.000 m²





Godina izgradnje / Year of build: 2011
 Investitor / Investor: YURA Corporation
 Projektovao / Design: ABR, Niš

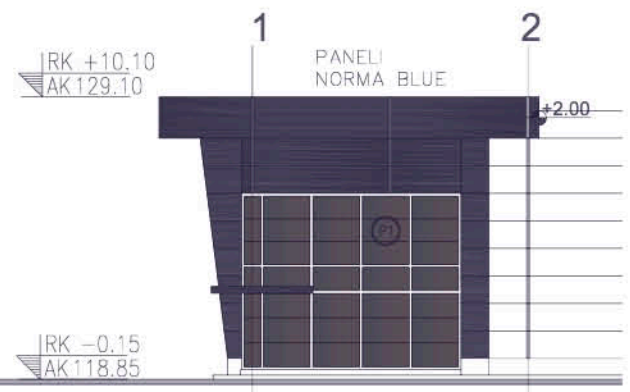
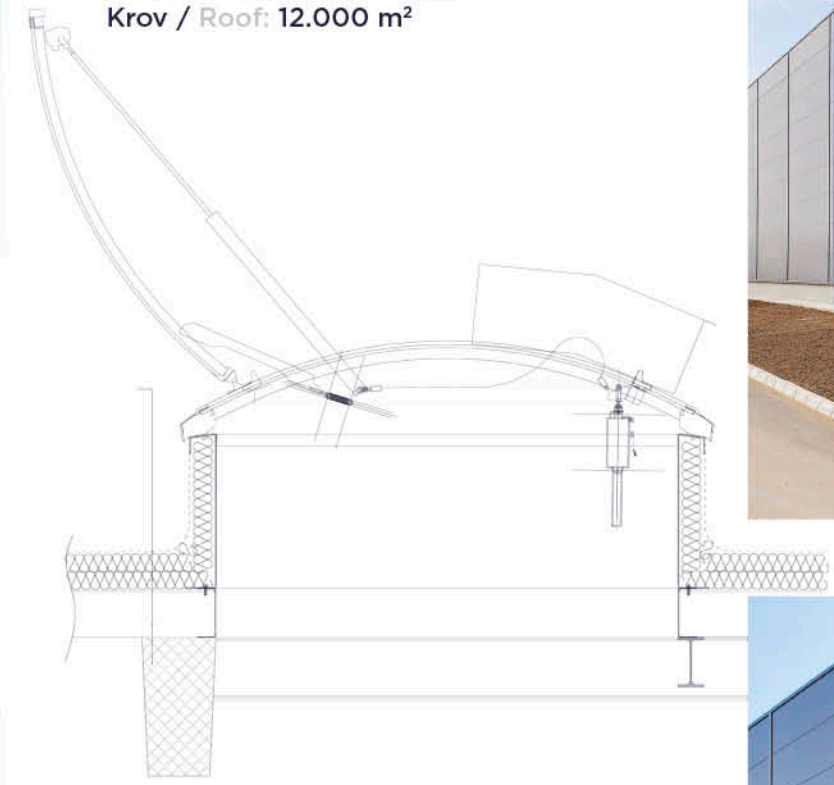
Fasada / Facade: 4.000 m²
 Krov / Roof: 18.900 m²





Godina izgradnje / Year of build: 2011
Investitor / Investor: Norma Group
Projektovao / Design: North Engineering, Subotica

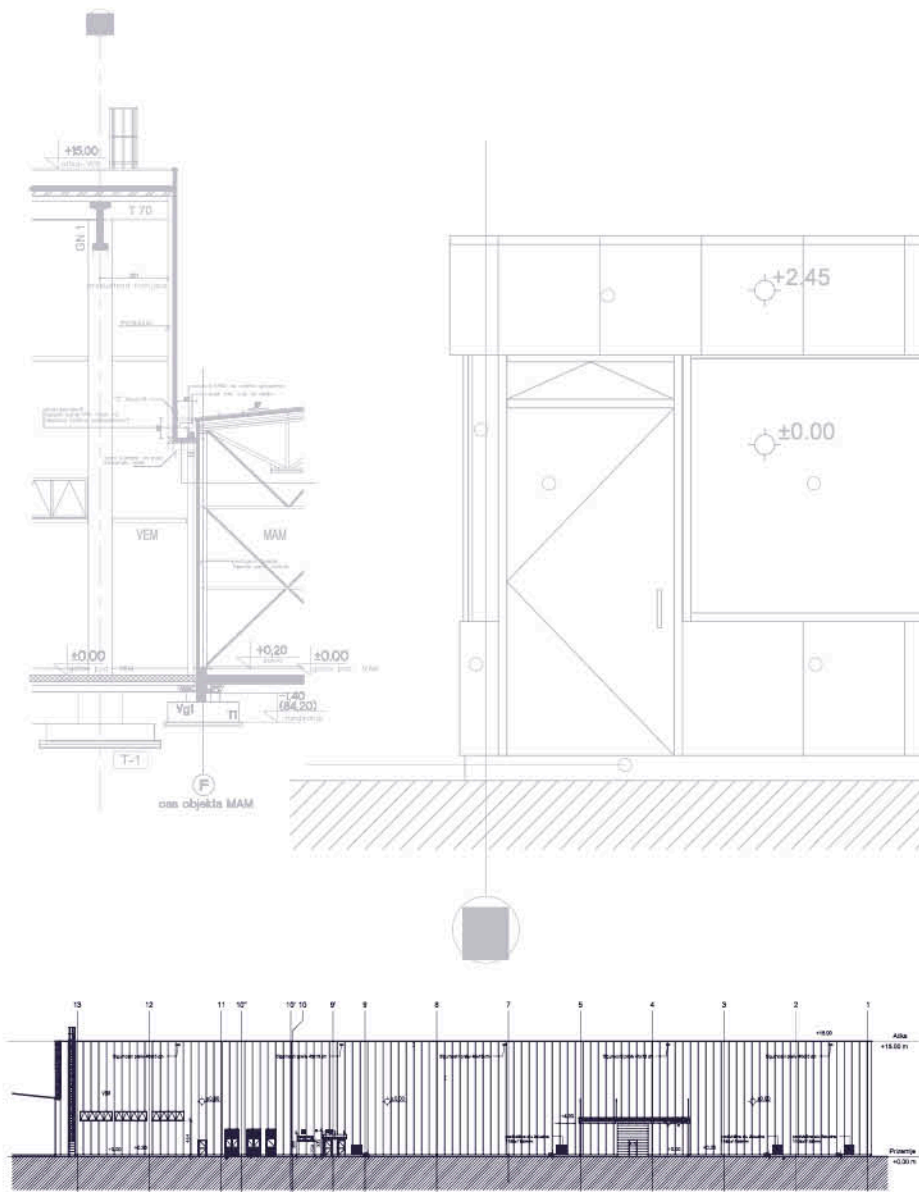
Fasada / Facade: 5.000 m²
Krov / Roof: 12.000 m²





Godina izgradnje / Year of build: 2011
Investitor / Investor: Polimark
Projektovao / Design: D.A. Dizajnarhitektura

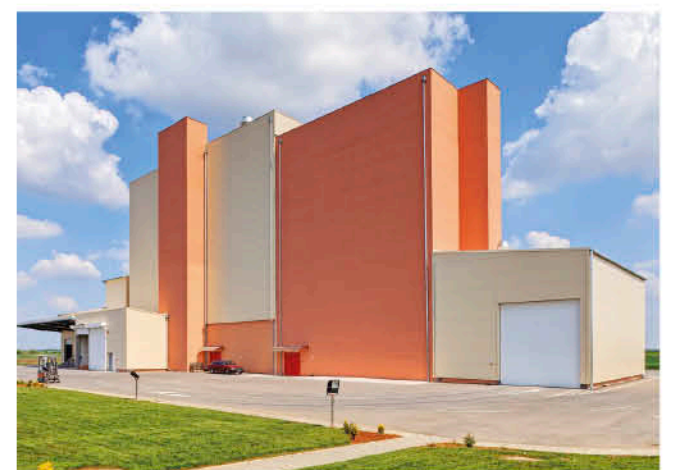
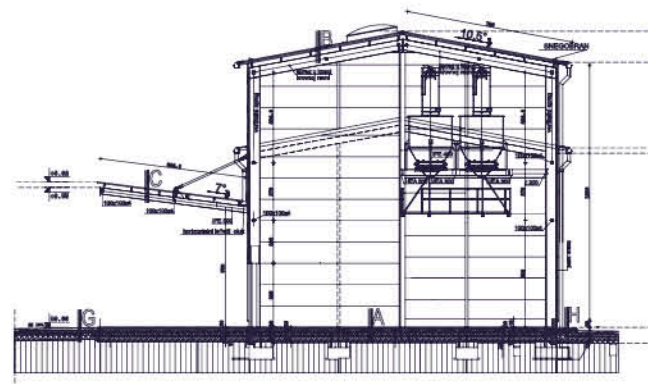
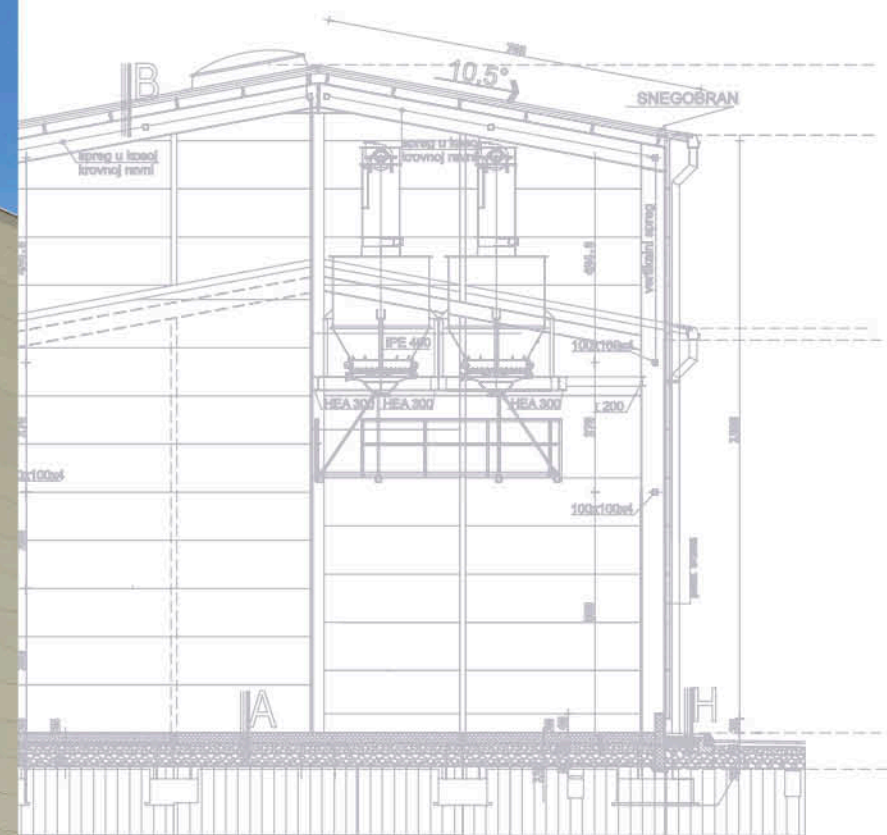
Fasada / Facade: 5.800 m²
Krov / Roof: 4.600 m²





Godina izgradnje / Year of build: 2011
Investitor / Investor: Julia Mlin
Projektovao / Design: North Engineering, Subotica

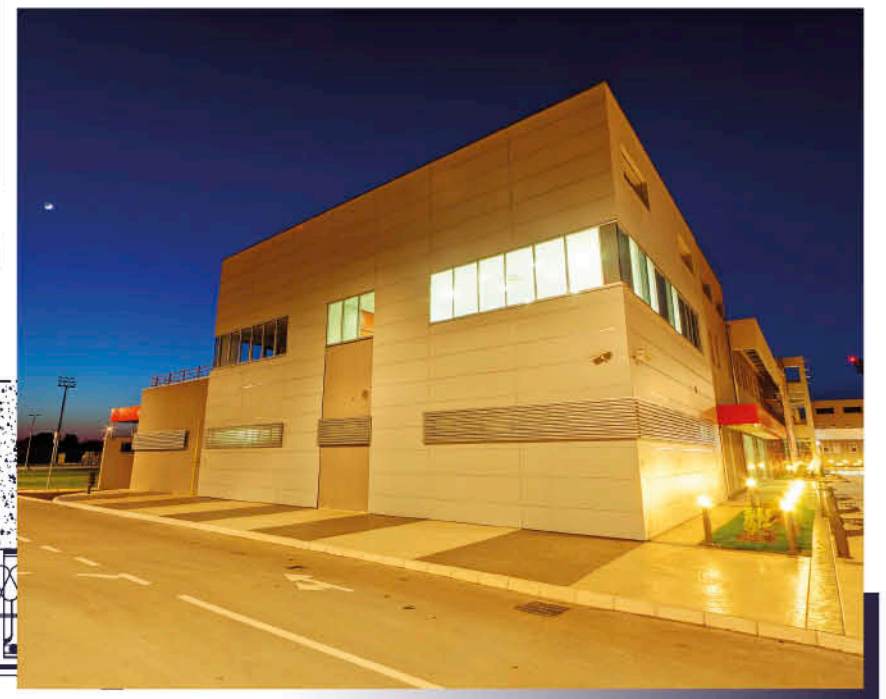
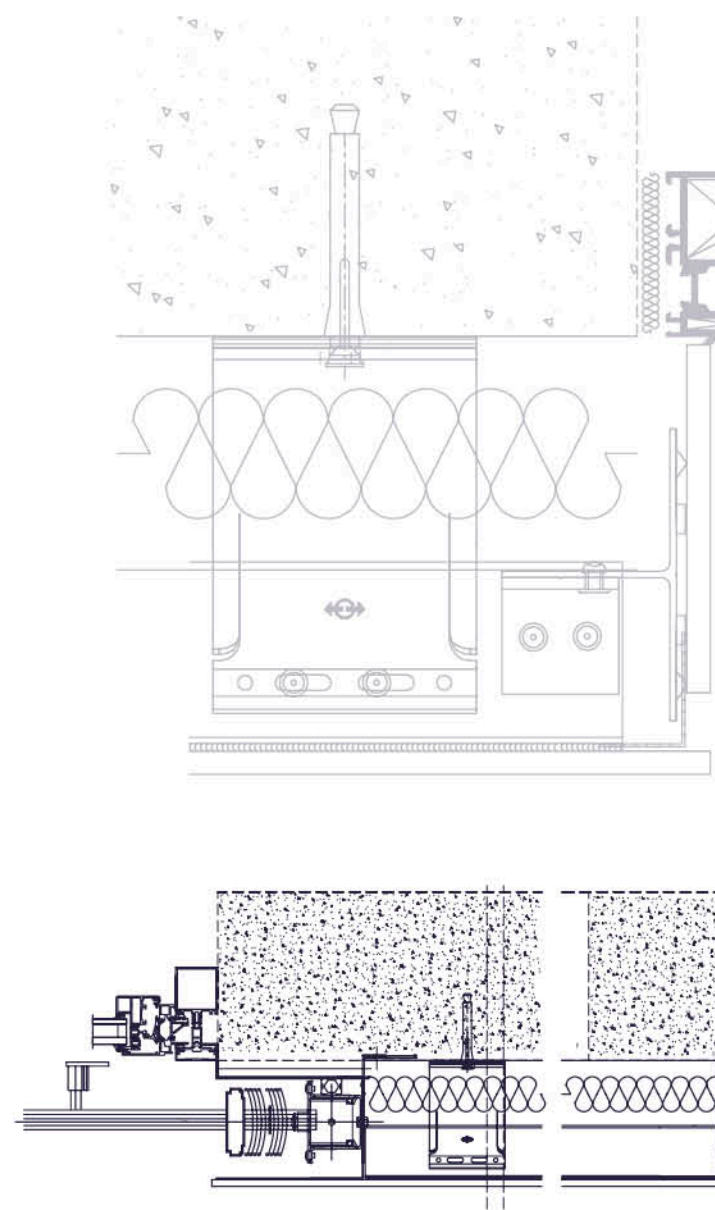
Fasada / Facade: 2.800 m²
Krov / Roof: 700 m²





Godina izgradnje / Year of build: 2010
Investitor / Investor: Fudbalski savez Srbije
Projektovao / Design: CIP Beograd

Fasada / Facade: 3.400 m²
Sistem / System: Eternit





Godina izgradnje / Year of build: 2010
Investitor / Investor: METRO C&C
Projektovao / Design: North Engineering, Subotica
Fasada / Facade: 3.700 m²
Krov / Roof: 12.000 m²



Godina izgradnje / Year of build: 2010
Investitor / Investor: Kontrola letenja Srbije i Crne Gore Smatsa
Projektovao / Design: Mašinoprojekt Koprining, Beograd
Krov / Roof: 2.000 m²
Sistem / System: Kalzip

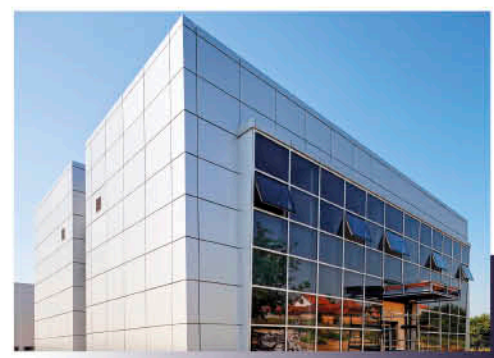




Godina izgradnje / Year of build: 2010
Investitor / Investor: MIKA PS
Projektovao / Design: Centroprojekt AD
Fasada / Facade: 1.700 m²
Krov / Roof: 1.000 m²



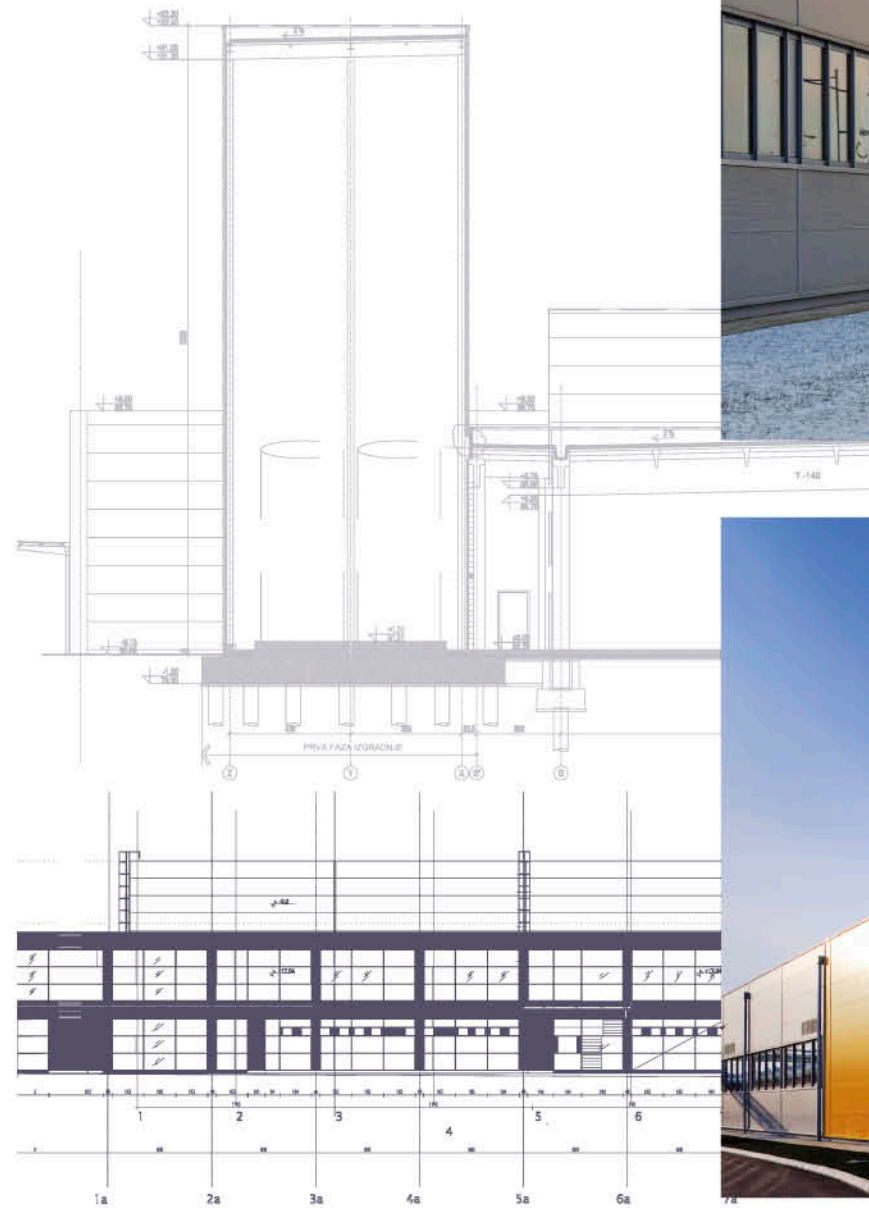
Godina izgradnje / Year of build: 2009
Investitor / Investor: Kika
Projektovao / Design: Mašinoprojekt Koprivica, Beograd
Fasada / Facade: 4.000 m²
Krov / Roof: 7.000 m²





Godina izgradnje / Year of build: 2009
Investitor / Investor: Banini
Projektovao / Design: Mašinoprojekt Kopriv, Beograd

Fasada / Facade: 8.000 m²
Krov / Roof: 18.000 m²





Godina izgradnje / Year of build: 2009
Investitor / Investor: Mr. Bricolage
Projektovao / Design: Service Architecture

Fasada / Facade: 2.800 m²
Krov / Roof: 6.200 m²





Godina izgradnje / Year of build: 2008
Investitor / Investor: DELTA Motors
Arhitekta / Architect: Mašinoprojekt Kopriv, Beograd
Fasada / Facade: 1.300 m²
Krov / Roof: 3.700 m²



Godina izgradnje / Year of build: 2008
Investitor / Investor: DELTA MAXI
Projektovao / Design: Centroprojekt AD
Fasada / Facade: 3.400 m²
Krov / Roof: 4.000 m²

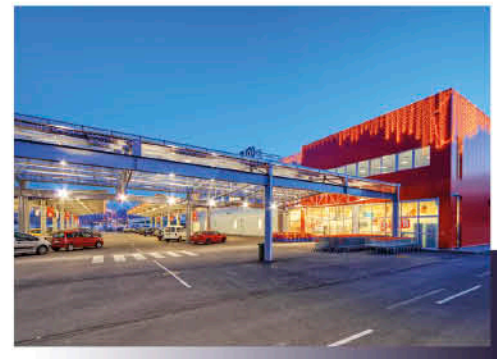




Godina izgradnje / Year of build: 2008
Investitor / Investor: DELTA MAXI
Fasada / Facade: 3.900 m²
Krov / Roof: 8.000 m²



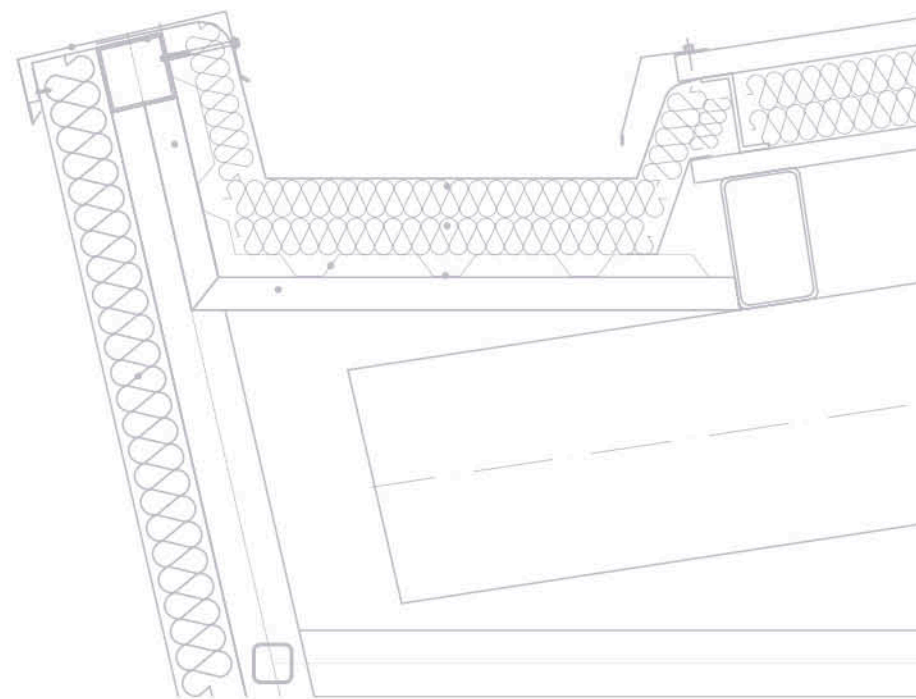
Godina izgradnje / Year of build: 2008
Investitor / Investor: Izoterm Plama
Projektovao / Design: Multicon Inženjering
Fasada / Facade: 2.200 m²
Krov / Roof: 3.100 m²

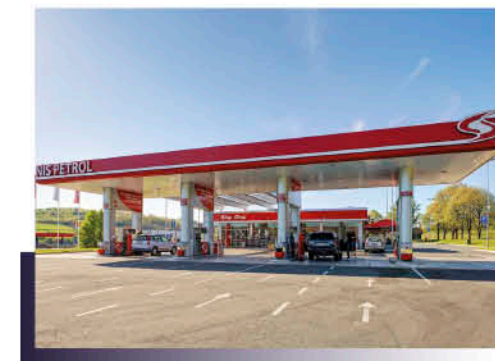


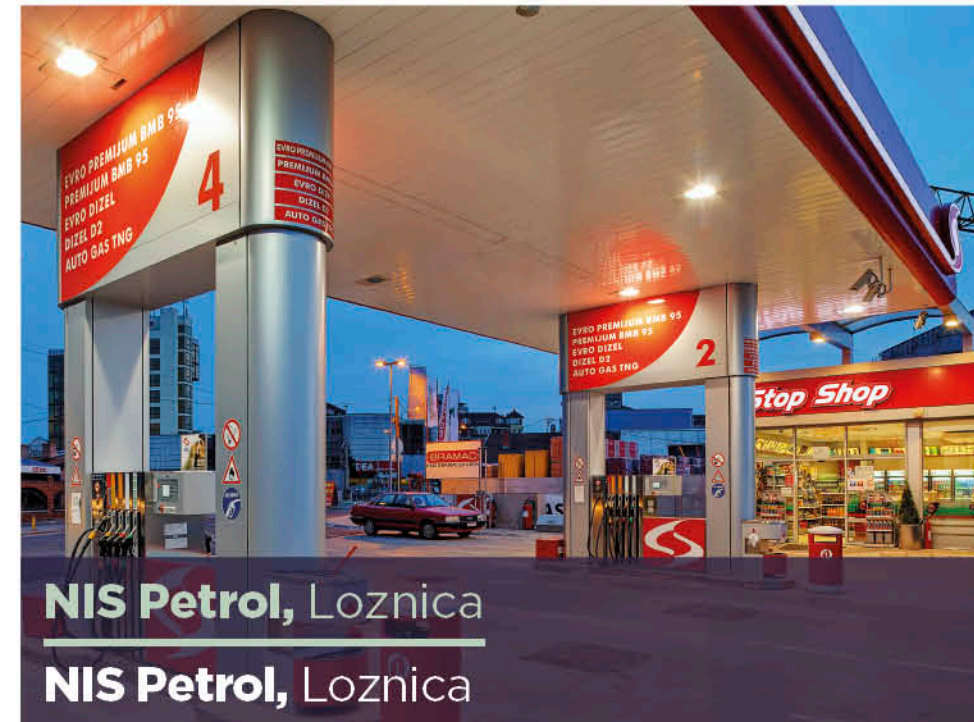
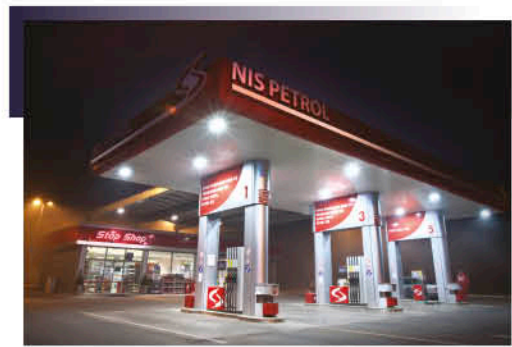


Godina izgradnje / Year of build: 2008
Investitor / Investor: DELTA MAXI
Projektovao / Design: D.A. Dizajnarhitektura

Fasada / Facade: 8.000 m²
Krov / Roof: 18.000 m²









Godina izgradnje / Year of build: 2008
Fasada / Facade: 1.200 m²
Krov / Roof: 1.600 m²



Godina izgradnje / Year of build: 2008
Fasada / Facade: 15.500 m²
Krov / Roof: 10.000 m²



VALY, Valjevo

VALY, Valjevo

Godina izgradnje / Year of build: 2007-2012

Fasada / Facade: 20.000 m²

Krov / Roof: 5.000 m²



VALY, Loznica

VALY, Loznica

Godina izgradnje / Year of build: 2007-2012

Fasada / Facade: 25.000 m²

Krov / Roof: 13.000 m²



SOCIETE GENERALE, Beograd

SOCIETE GENERALE, Belgrade

Godina izgradnje / Year of build: 2010



SIMPLEX, Temerin

SIMPLEX, Temerin

Godina izgradnje / Year of build: 2010



KROVNI SVETLARNICI I KUPOLE, LAMILUX CI SISTEM

DAYLIGHT ELEMENTS, LAMILUX CI SYSTEM



Krovne svetlosne kupole F100

Roof light domes F100

ENERGETSKA EFIKASNOST

Izuzetna toplotna izolacija kao rezultat:

- višeslojnog, unutrašnjeg sistema za dvostruko zaptivanje
- višeslojna ostakljenja kupola
- inovativni, dimenziono stabilan profil rama
- nasadni venac izrađen od kompozita ojačanog staklenim vlaknima sa izolacijom vezanom za celu površinu
- opciono: ugradnja sa toplotno izolovanom osnovnom prirubnicom

MEĐUNARODNI STANDARDI

- EN 1873 - kao primer, nosivost prema opterećenju vetrom i snegom sertifikovan prema prvom evropskom proizvodnom standardu za krovne kupole
- EN 12101-2 - sistem za odvođenje dima i toplote testiran u skladu sa evropskim standardom za tu vrstu proizvoda
- može se koristiti širom Evrope bez dodatnih sertifikata

STABILNOST

Optimalna nosivost kao rezultat:

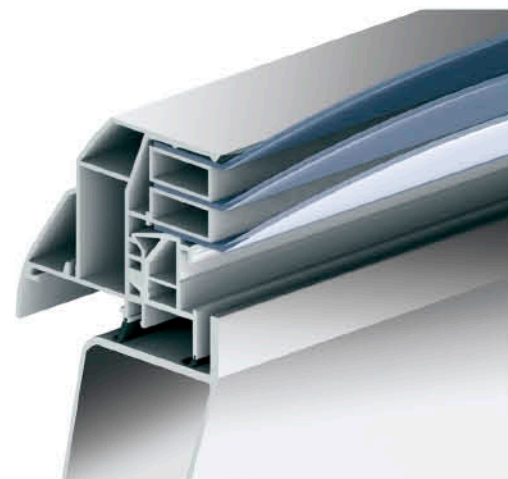
- novog, modularnog sistema profila rama sa delimičnim ojačanjima od fiberglasa
- nasadni venac ojačan staklenim vlaknima sa različitim opcijama pričvršćivanja

SIGURNOST

Preventivna zaštita od požara kao rezultat:

- usklađenost sa DIN 18234 (sprečavanje širenja vatre na krov) bez dodatnih mera (na primer, nasipanje šljunka)

Prednosti: bezbednost i ušteda troškova



ENERGY EFFICIENCY

Exceptional heat-insulation values due to:

- Multi-layered, internal double seal system
- Multi-glazed upper sections
- Innovative, dimensionally stable frame profiles
- Fibre-reinforced composite upstand with insulation bonded to the whole surface
- Option: Upstand with heat-insulated base flange

INTERNATIONAL STANDARDS

- EN 1873 - For example, wind and snow load bearing capacity certified according to the first European product standard for rooflight domes
- EN 12101-2 - Smoke and heat extraction system tested in accordance with the European product standard for smoke and heat control systems
- Can be used throughout Europe without additional certification

STABILITY

Optimum load capacity due to

- New, modular frame system with partial reinforcement made of fibre-reinforced plastic
- Fibre-reinforced upstand with variable bracing options

SAFETY

Preventive fire protection due to

- Compliance with DIN 18234 (prevention of fire spread on the roof) without additional measures (for example, gravel packing)

Benefits: Safety and cost savings

Krovne svetlosne trake Rooflight B

Continuous Rooflight B

IZOTERMALNI PRENOSNIK OPTEREĆENJA - IPO

Izotermalni prenosnik opterećenja (IPO) je suštinska komponenta u osnovnom profilu kontinualne svetlosne trake, što omogućava primenu toplotno provodljivih, metalnih komponenti koje treba razdvojiti.

ITL - KORISTI OPTIMALNE ENERGETSKE EFIKASNOSTI

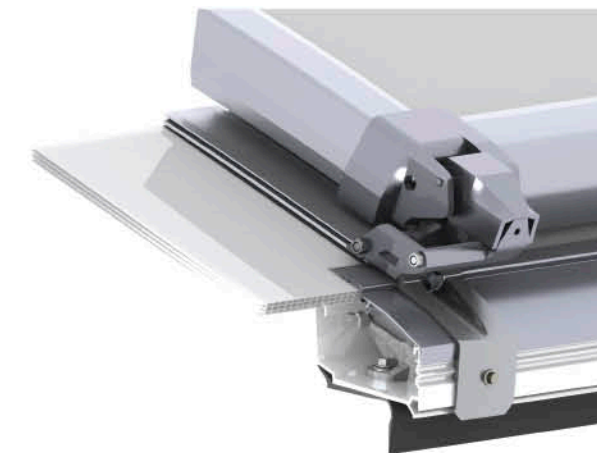
- izvanredne vrednosti U_f baznog profila i pojačana toplotna izolacija
- poboljšana nosivost osnovnog profila
- značajno smanjen rizik od kondenzacije
- optimizovana ventilacija profila
- glatka unutrašnjost sa manje ivica, čime se osigurava manje nečistoća

AKTIVNI APSORBER EKSPANZIJE - AEA

Aktivni apsorber ekspanzije (AEA) osigurava dugotrajno i čvrsto zaptivanje između poklopnih lajsni i ostakljenja. On sprečava ispadanje zaptivke u zoni ostakljenja, čak i u slučaju velikih opterećenja vetrom i trpi velika opterećenja snegom.

AEA - SIGURNOSNI ASPEKTI U DETALJIMA

- ostakljenje je čvrsto povezano poklopnim lajsnama sa nosećim profilima
- pokrivne lajsne imaju ugrađene zaštitne šine, za montažu okova, instalaciju Sistema za zaštitu od sunca i opremu za održavanje.
- sigurnost je značajno povećana proširenom zonom prijanjanja



THE ISOTHERMAL LOAD CONVERTER - ITL

The isothermal load converter (ITL) is the essential component in the base profile of the continuous rooflight, which enables thermally-conductive, metal components to be dispensed with.

ITL - BENEFIT FROM OPTIMUM ENERGY EFFICIENCY

- Excellent U_f values in the base profile and even better Heat insulation
- Improved load-bearing capacity of the base profile
- Significantly reduced risk of condensation
- Optimised rebate ventilation
- Smooth interior with fewer edges, ensuring less dirt and grime

THE ACTIVE EXPANSION ABSORBER - AEA

The active expansion absorber (AEA) ensures a long-lasting tight seal to the connection between the cover plates and the glazing. It prevents the sealings in the area of the glazing bars from slipping, even in the event of high wind-drag loads and heavy snow loads.

AEA - SAFETY ASPECTS IN DETAIL

- The glazing is connected to the cover plates and the glazing bars with a tight, form-fitting seal
- The Cover plates have integrated safety rails, for mounting fittings, solar protection installations and maintenance equipment
- The clamping security is increased due to an extended adhesion region.

Sistemi za odvođenje dima i toplote

Smoke and heat exhaust-ventilation systems



DOKAZANI UREĐAJI ZA ODVOĐENJE DIMA

- Projektovani u skladu sa DIN 18232-2 i sertifikovani prema EN 12101-2.
- Sprečavaju da se prostorije ispune dimom.
- Pouzdano obezbeđuju sloj bez dima u nižim zonama.
- Sadrže scenario u slučaju požara i minimalizuju posledice
- ... spašavaju ŽIVOTE
- ... štite NEKRETNINE
- ... smanjuju RIZIKE KOMPANIJE
- ... pružaju DODATNU VREDNOST i obezbeđuju **SIGURNOST!**

SHEV SISTEMI - OSNOVNI ZA PREŽIVLJAVANJE

Ovi sistemi koriste termički uzgon za kanalsanje dima, toplote i toksičnih gasova i njihovo izbacivanje. Kako se svež vazduh uvlači u objekat, u donjim slojevima se formira zona bez dima, što:

- omogućava ljudima da pobegnu napolje
- obezbeđuje vidljivost za spasilačke ekipe kako bi se pomoglo zarobljenim ljudima i ugasila vatra.

- **SAVRŠENA KOMBINACIJA:**
KROVNI SVETLOSNI ELEMENTI SA SHEV FUNKCIJOM

APPROVED SMOKE OUTLET DEVICES

- They are designed in line with DIN 18232-2 and certified as per EN 12101-2.
- They prevent rooms filling with smoke.
- They reliably ensure a smoke-free layer.
- They contain the fire scenario and minimise its consequences.
- ... save LIVES
- ...protect PROPERTY
- ...reduce COMPANY RISKS
- ...offer ADDED VALUE and ensure **SAFETY!**

SHEV SYSTEMS - ESSENTIAL FOR SURVIVAL

These systems use thermal buoyancy to channel smoke, heat and toxic gases into the open air. As fresh air is drawn in, a smoke-free layer forms near the ground,

- enabling people to escape to the outside.
- providing clear view for rescue services to help captured people and extinguishing the fire.

- **PERFECT COMBINATION:**
DAYLIGHT ELEMENTS WITH SHEV FUNCTION



CI SYSTEM PR60 Arhitektura stakla

CI SYSTEM PR60 Architecture of glass



SISTEM PROFILA - ENERGETSKA EFIKASNOST I SIGURNOST

- izuzetno stabilna noseća konstrukcija izrađena od aluminijuma bez torzije
- dizajn praktičnih slobodnih oblika od 0 do 90°
- efikasna ventilacija u svim staklenim zonama
- kontrolisano odvođenje vode i kondenzata zahvaljujući sekundarnom odvodu sa EPDM zaptivkama
- prethodno definisani sistem stezanja staklenih paketa zasnovan na mreži distancera
- elastično oslanjanje staklenih paketa

OPTIMIZOVAN SISTEM ZAPTIVANJA RADI OTKLANJANJA KONDENZACIJE

KOMFOR I TEHNOLOGIJA

Inteligentna upotreba visoko efikasnih materijala ograničava minimalnu površinsku temperaturu na unutrašnjoj površini stakla. To sprečava kondenzaciju i pojavu buđi.

TESTIRAN I ODOBREN SISTEM SA PRIZNATOM SERTIFIKACIJOM.



THE PROFILE SYSTEM - ENERGY EFFICIENCY AND SAFETY

- Extremely stable supporting structure made of torsion-free aluminium
- Virtually free-form design from 0 to 90°
- Efficient ventilation in the glass rebates
- Controlled water and condensate run-off thanks to overlapping EPDM secondary draining
- Pre-defined glazing clamping system based on insulating spacer webs
- Elastic bedding of glass pane

OPTIMISED SEALING SYSTEM TO AVOID CONDENSATION

COMFORT AND TECHNOLOGY

The intelligent use of highly efficient materials limits the minimum surface temperature on the inside of glass structures. This avoids condensation and mould growth.

TESTED AND APPROVED WITH RECOGNISED CERTIFICATION

GRADILI SMO I...

WE HAVE BUILT...



NELT, Dobanovci

NELT, Dobanovci

Godina izgradnje / Year of build: 2007

Nadstrešnica / Baudekin: 10.000 kg

Krov / Roof: 4.500 m²



FIAT SRBIJA, Kragujevac

FIAT SERBIA, Kragujevac

Kotlarnica, trafostanice,

Godina izgradnje / Year of build: 2011

Fasada / Facade: 4.000 m²

Krov / Roof: 4.500 m²



VODE VOJVODINE, Novi Sad

VODE VOJVODINE, Novi Sad

Godina izgradnje / Year of build: 2011

Fasada / Facade: 1.000 m²

Krov / Roof: 1.850 m²



MAXI, Kruševac

MAXI, Krusevac

Godina izgradnje / Year of build: 2004

Fasada / Facade: 1.700 m²

Krov / Roof: 4.000 m²



MAXI, Pančevo

MAXI, Pancevo

Godina izgradnje / Year of build: 2005

Fasada / Facade: 2.400 m²

Krov / Roof: 4.500 m²



MAXI, Vršac

MAXI, Vrsac

Godina izgradnje / Year of build: 2005

Fasada / Facade: 1.000 m²

Krov / Roof: 1.400 m²



TEMPO C&C, Beograd

Tempo C&C, Belgrade

Godina izgradnje / Year of build: 2006

Fasada / Facade: 5.000 m²

Nadstrešnica / Baudekin: 3.500 kg

Krov / Roof: 13.500 m²



TEMPO C&C, Novi Sad

Tempo C&C, Novi Sad

Godina izgradnje / Year of build: 2006

Fasada / Facade: 4.200 m²

Nadstrešnica / Baudekin: 2.200 kg

Krov / Roof: 9.200 m²



TEMPO C&C, Niš

Tempo C&C, Nis

Godina izgradnje / Year of build: 2006

Fasada / Facade: 3.500 m²

Nadstrešnica / Baudekin: 1.300 kg

Krov / Roof: 7.200 m²



HONDA, Novi Beograd

HONDA, New Belgrade

Godina izgradnje / Year of build: 2005

Fasada / Facade: 800 m²

Krov / Roof: 1.300 m²



VODA VODA, Banja Vrujci

VODA VODA, Banja Vrujci

Godina izgradnje / Year of build: 2004

Fasada / Facade: 2.500 m²

Krov / Roof: 4.000 m²



TPC Blok 70, Beograd

TPC Blok 70, Beograd

Godina izgradnje / Year of build: 2004

Fasada / Facade: 3.700 m²

Fasadna podkonstrukcija /

Underconstruction Facade: 45t

Krov / Roof: 3.200 m²

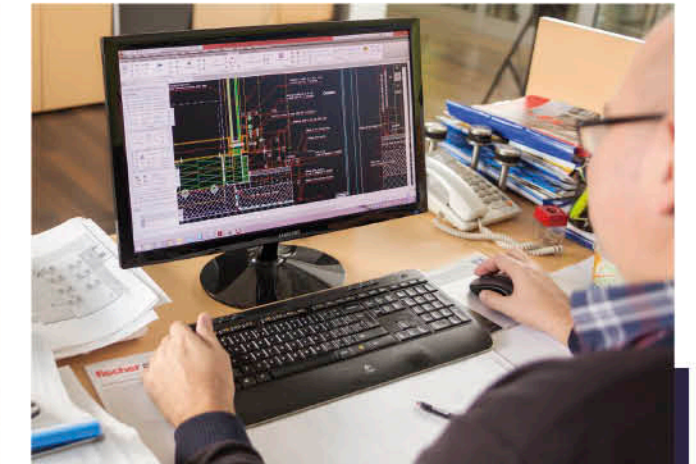
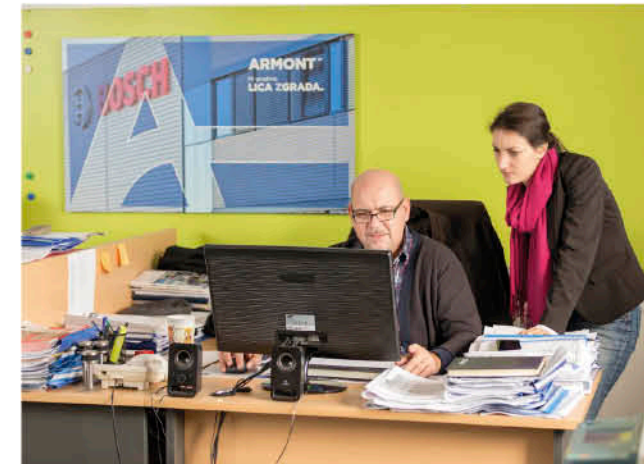
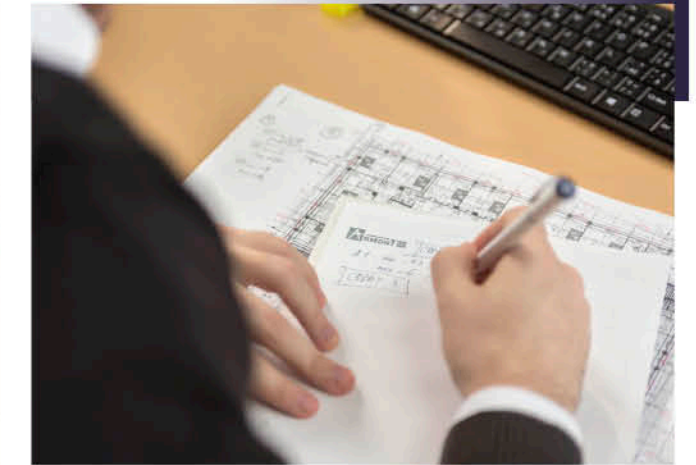




PROJEKTOVANJE, PROIZVODNJA I MONTAŽA
DESIGN, PRODUCTION AND INSTALLING



PROJEKTOVANJE DESIGN



Sve nove projekte posmatramo kao izazov i mogućnost za primenu inovativnih projektnih rešenja.

Kombinacijom vrlo sofisticiranih arhitektonskih rešenja i savremene građevinske tehnologije, Armont SP fasade daju novi estetski pristup – definišu lica novih zgrada.

Kao proizvod tesne saradnje između našeg projektnog biroa i Klijenata, svakodnevno se razvijaju personalizovana rešenja i koncepti za sve oblasti izrade prozora i fasada. Uz pomoć najsavremenijih programa kao što su Autocad, Cad-Plan Athena, Orgadata Logical, Elusoft, planiramo kompletnu konstrukciju na osnovu početnih crteža.

We consider all new projects as a challenge and opportunity for application of innovative project solutions.

By combining very sophisticated architectural solutions and modern building technology, Armont SP facades give a new esthetic approach – we define faces of new buildings.

As a product of close cooperation between our project department and the Clients, personalized solutions and concepts for every area of the window and facade are being developed on a daily basis. With the help of most modern programs such as Autocad, Cad-Plan Athena, Orgadata Logical, Elusoft, we plan a complete construction based on the initial drawings.



PROIZVODNJA
PRODUCTION



Fasadna bravarija i staklene fasade

ARMONT SP program proizvodnje prozora, vrata i fasadnih elementa je efikasan, precizan i po najvišim tehničkim standardima. Proizvodni pogon površine od 2.000 kvadratnih metara svakodnevno je u funkciji u cilju realizacije raznovrsnih projekata. U linijskoj proizvodnji, prozori, fasade, elementi fasade i završni delovi se montiraju i isporučuju na gradilište uvek u zadatim rokovima. Industrijska proizvodnja pod optimalnim uslovima je garancija za prilagođeni kvalitet.

Fasadne obloge, ventilisane fasade

Proizvodnja aluminijumskih obloga je okosnica našeg poslovanja, ali nije i jedino što Armont SP proizvodi. Posedujemo i dugogodišnje iskustvo u proizvodnji svih ostalih vrsta ventilisanih fasada kao što su Trespa, Fundermax, Eternit, Alucobond, Alubond, kao i specijalno dizajniranih obloga i zavarenih konstrukcija. Proizvodimo prema najnovijim standardima tehnologije savijanja i obrade metala.

Facade locksmiths and glass facades

ARMONT SP program of window, door and facade production is efficient, precise and according to the highest technical standards. The production area of 2.000 square meters is operational every day for the purpose of realization of various projects. In liner production, windows, facades, facade elements and finishing components are mounted and delivered to the site all the time. Industrial production under optimal conditions is a guarantee of custom quality.

Facade lining, ventilated facades

The production of aluminum coatings is the backbone of our business, but it is not the only thing Armont SP produces. We have many years of experience in the production of all other types of ventilated façades such as Trespa, Fundermax, Eternit, Alucobond, Alubond, as well as specially designed wraps and welded structures. We manufacture according to the latest standards of bending and metal processing technology.



MONTAŽA
INSTALLING



ARMONT SP osim projektovanja i proizvodnje nudi i vrhunsku uslugu montaže prozora i fasada. Montažne radove izvodimo po najvišim standardima, uz superviziju stručnih kadrova na terenu. Zato naše fasade imaju najviše ocene po pitanju energetske efikasnosti a prostor u objektima ispunjava sve norme zdrave životne sredine. Mi znamo šta je važno da bi kvalitet bio merljiv.

Apart from design and manufacturing, ARMONT SP offers a top-of-the-range window and facade assembly service. Installation works are carried out to the highest standards, with the supervision of professional personnel in the field. That's why our facades have the highest ratings in terms of energy efficiency and space in buildings meets all norms of a healthy environment. We know what's important for quality to be measurable.

REFERENCE

REFERENCES



Naše dosadašnje aktivnosti su dovele do kreiranja prepoznatljivog imena ARMONT SP kao kvalitetnog, pouzdanog, sigurnog i dobrog partnera kao lidera u izgradnji montažnih objekata.

Kontinuiran napredak i mnogobrojni realizovani objekti najbolji su pokazatelji dosadašnjeg uspešnog rada. Između ostalih to su:

Proizvodni objekti:

- BOSCH, Pećinci
- MIKROELEKTORINKA, Zemun
- NORMA GROUP, Subotica
- FALKE, Leskovac
- DUNKERMOTOREN, Subotica
- MUEHLBAUER, Stara Pazova
- JULIA MLIN, Feketić
(deo Muehle Cottbus GMBH grupacije)
- YURA, Leskovac
- SHINWON, Niš
- FAS - FIAT, Kragujevac
- BANINI, Kikinda
- RAUCH, Koceljeva
- VALY, Valjevo
- VALY, Loznica
- POLIMARK, Beograd
- GALENIKA - FITOFARMACIJA, Beograd
- LEDO, Podgorica
- NELT CO, Šimanovci
- GORENJE, Stara Pazova i Zajecar
- MIKA PS, Dobanovci
- IZOTERM, Indija
- PINK FILMSKI STUDIO, Šimanovci
- DTD RIBARSTVO, Bački Jarak
- COCA-COLA HBC, Beograd
- ROSA, Surdulica
- FLORIDA BEL, Beograd
- AL PACK, Subotica
- NESTLE, Dobanovci
- BN BOS, Zemun
- ALPEN - LEMKEN, Nemačka
- BANJA KOMERC BEKAMENT, Arandjelovac
- BENETTON, Niš
- MAURICIUS VEROPULOS, Beograd
- FORMEX, Belegiš
- CONTITECH, Subotica
- BISI, Stara Pazova
- LA LINEA VERDE, Dobanovci
- LE BELIER, Kikinda
- MONDI, Šabac,
- AGROUNIJA, Krčedin
- GUMA-S, Sombor
- AGROMARKET, Indija

Our past activities have led to the creation of a recognizable name ARMONT SP as a quality, reliable, safe and good partner as a leader in the construction of prefabricated buildings.

Continuous progress and numerous realized objects are the best indicators of the successful work so far. Among others are:

Production facilities:

- BOSCH, Pecinci
- MIKROELEKTORINKA, Zemun
- NORMA GROUP, Subotica
- FALKE, Leskovac
- DUNKERMOTOREN, Subotica
- MUEHLBAUER, Stara Pazova
- JULIA MLIN, Feketic
(part of Muehle Cottbus GMBH group)
- YURA, Leskovac
- SHINWON, Nis
- FAS - FIAT, Kragujevac
- BANINI, Kikinda
- RAUCH, Koceljeva
- VALY, Valjevo
- VALY, Loznica
- POLIMARK, Belgrade
- GALENIKA - FITOFARMACIJA, Belgrade
- LEDO, Podgorica
- NELT CO, Simanovci
- GORENJE, Stara Pazova and Zajecar
- MIKA PS, Dobanovci
- IZOTERM, Indjija
- PINK MOVIE STUDIO, Simanovci
- DTD RIBARSTVO, Backi Jarak
- COCA-COLA HBC, Belgrade
- ROSA, Surdulica
- FLORIDA BEL, Belgrade
- AL PACK, Subotica
- NESTLE, Dobanovci
- BN BOS, Zemun
- ALPEN - LEMKEN, Germany
- BANJA KOMERC BEKAMENT, Arandjelovac
- BENETTON, Nis
- MAURICIUS VEROPULOS, Belgrade
- FORMEX, Belegis
- CONTITECH, Subotica
- BISI, Stara Pazova
- LA LINEA VERDE, Dobanovci
- LE BELIER, Kikinda
- MONDI, Sabac
- AGROUNIJA, Krcedin
- GUMA-S, Sombor
- AGROMARKET, Indjija

Trgovinski centri:

- METRO CASH & CARRY, Subotica
- METRO CASH & CARRY, Beograd
- KIKA, Beograd
- BIG CEE POWER CENTER, Novi Sad
- DELTA CITY, Beograd
- DELTA CITY, Podgorica
- MR. BRICOLAGE, Niš
- RODA C&C, Novi Beograd
- TEMPO - MAXI, Smederevska Palanka, Kraljevo, Čačak, Novi Sad, Beograd, Niš, Vrnjačka Banja, Bar, Podgorica, Pančevo, Šabac, Kruševac, Vršac
- LIDL, Smederevo, Beograd (Vojislava Ilića i Kneza Višeslava), Stara Pazova, Šabac, Zrenjanin, Subotica, Niš, Novi Sad, Sombor, Leskovac, Kruševac
- IDEA, Novi Banovci

Auto centri i benzinske pumpe:

- BMW – MINI, Beograd
- HONDA, Beograd
- SIMPLEX, Temerin
- NIS - GAZPROM NEFT, Šabac
- NIS - GAZPROM NEFT, Bačka Topola
- NIS - GAZPROM NEFT, Loznica
- NIS - GAZPROM NEFT, Smederevo
- NIS - GAZPROM NEFT, Mali Požarevac
- ŠTELA AUTO - SERVISNA RADIONICA, Zemun
- AMSS CENTAR ZA MOTORNA VOZILA, Beograd
- MAZDA, Niš

Poslovni objekti:

- NETIKS, Beograd
- GORENJE, Novi Beograd
- KONTROLA LETA, Surčin i Batajnica
- STAMBENO POSLOVNI OBJEKAT KRUNSKA 87, Beograd
- KINOTEKA, Beograd
- RAIFFEISEN BANK, Upravna zgrada, Novi Beograd
- MOZZART SPORTSKA KLADIONICA, Upravna zgrada, Beograd
- U-BAHN, Stanica metroa, Düsseldorf, Nemačka
- MUSEUM, Hanover, Nemačka
- NLB BANKA, Beograd
- METTMAN, Nemačka
- INSTITUT ZA MATERIJALE SRBIJE – IMS, Beograd
- PFB, Beograd
- TERBOINOX, Sombor

Shopping centers:

- METRO CASH & CARRY, Subotica
- METRO CASH & CARRY, Belgrade
- KIKA, Belgrade
- BIG CEE POWER CENTER, Novi Sad
- DELTA CITY, Belgrade
- DELTA CITY, Podgorica
- MR. BRICOLAGE, Nis
- RODA C&C, New Belgrade
- TEMPO - MAXI, Smederevska Palanka, Kraljevo, Cacak, Novi Sad, Belgrade, Nis, Vrnjacka Banja, Bar, Podgorica, Pancevo, Sabac, Krusevac, Vrsac
- LIDL, Smederevo, Belgrade (Vojislava Ilica and Kneza Viseslava), Stara Pazova, Sabac, Zrenjanin, Subotica, Nis, Novi Sad, Sombor, Leskovac, Krusevac
- IDEA, Novi Banovci

Car centers and gas stations:

- BMW – MINI, Belgrade
- HONDA, Belgrade
- SIMPLEX, Temerin
- NIS - GAZPROM NEFT, Sabac
- NIS - GAZPROM NEFT, Backa Topola
- NIS - GAZPROM NEFT, Loznica
- NIS - GAZPROM NEFT, Smederevo
- NIS - GAZPROM NEFT, Mali Požarevac
- STELA AUTO - SERVICE WORKSHOP, Zemun
- AMSS CENTER FOR MOTOR VEHICLES, Belgrade
- MAZDA, Nis

Business facilities:

- NETIKS, Belgrade
- GORENJE, New Belgrade
- FLY CONTROL, Surcin and Batajnica
- RESIDENTIAL BUILDING OBJECT KRUNSKA 87, Belgrade
- KINOTEKA, Belgrade
- RAIFFEISEN BANK, Administrative building, New Belgrade
- MOZZART SPORTS BETTING, Administrative building, Belgrade
- U-BAHN, Metro stations, Düsseldorf, Germany
- MUSEUM, Hanover, Germany
- NLB BANKA, Belgrade
- METTMAN, Germany
- THE INSTITUTE FOR MATERIALS OF SERBIA – IMS, Belgrade
- PFB, Belgrade
- TERBOINOX, Sombor

Rezidencijalni objekti:

- ALŽIRSKA AMBASADA, Beograd
- BELVILLE UNIVERZITETSKO NASELJE BLOK 67, Novi Beograd
- HOTEL PRAG, Beograd
- RUSKI POSLOVNI KLUB, Beograd
- HOTEL GLORIA, Subotica
- TRGOVINA MATIJEVIĆ, Kruševac
- RALF HILBECK, Nemačka
- JAPANSKA AMBASADA, Beograd
- DORMAGE- MERKENICH, Keln, Nemačka
- WINTERBACH, Walhausen, Nemačka
- MÜLHEIM, Nemačka
- GRAĐEVINSKI FAKULTET, Beograd
- HOTEL TOYOKO, Frankfurt, Nemačka
- MANASTIR JAZAK, Fruška gora
- DOROTHEEN-QUARTIER, Stuttgart, Nemačka
- AMBASADA UAE, Beograd
- AMBASADA KRALJEVINE BELGIJE, Beograd
- PALATA PRAVDE, Beograd
- PUPINOVA PALATA, Novi Sad
- HOTEL PALIĆ, Palić

Zdravstveni objekti:

- KBC DRAGIŠA MIŠOVIĆ, Beograd
- DOM ZDRAVLJA JEDRO, Novi Beograd
- KLINIČKI CENTAR, Niš

Sportski objekti:

- SPORTSKI CENTAR PROZIVKA, Subotica
- NACIONALNA KUĆA FUDBALA, Stara Pazova
- SPORTSKI CENTAR SA BAZENIMA, Stara Pazova
- UNIVERZITETSKI VESLAČKI KLUB ADA CIGANLIJA, Beograd
- SPORTSKA HALA, Srpska Crnja

Posedujemo sertifikat ISO 9001 2008, a svojim radom neprekidno unapređujemo Sistem menadžmenta kvalitetom.

Gradimo dugoročne odnose sa svojim klijentima. Ukoliko tražite takvo poverenje i sigurnost, kao i kvalitet pre svega, onda ste na pravom mestu.

MI SMO IZBOR NAJBOLJIH.

Residential buildings:

- EMBASSY OF ALGERIA, Belgrade
- BELVILLE UNIVERSITY CAMPUS BLOK 67, New Belgrade
- HOTEL PRAGUE, Belgrade
- RUSSIAN BUSINESS CLUB, Belgrade
- HOTEL GLORIA, Subotica
- COMMERCE MATIJEVIC, Krusevac
- RALF HILBECK, Germany
- EMBASSY OF JAPAN, Belgrade
- DORMAGE- MERKENICH, Köln, Germany
- WINTERBACH, Walhausen, Germany
- MÜLHEIM, Germany
- CONSTRUCTION FACULTY, Belgrade
- HOTEL TOYOKO, Frankfurt, Germany
- MONASTERY JAZAK, Fruska gora
- DOROTHEEN - QUARTIER, Stuttgart, Germany
- EMBASSY OF UAE, Belgrade
- EMBASSY OF THE KINGDOM OF BELGIUM, Belgrade
- THE PALACE OF JUSTICE, Belgrade
- PUPIN PALACE, Novi Sad
- HOTEL PALIC, Palic

Health facilities:

- KBC DRAGISA MISOVIC, Belgrade
- HEALTH CENTRE JEDRO, New Belgrade
- CLINICAL CENTRE, Nis

Sports objects:

- SPORTS CENTER PROZIVKA, Subotica
- NATIONAL HOUSE OF FOOTBALL, Stara Pazova
- SPORTS CENTER WITH SWIMMING POOLS, Stara Pazova
- UNIVERSITY ROWER CLUB ADA CIGANLIJA, Belgrade
- SPORTS HALL, Srpska Crnja

We have the ISO 9001 2008 certificate, and with our work we continuously improve the Quality Management System.

We build long-term relationships with our clients. If you are looking for such confidence and security, as well as quality first of all, then you are in the right place.

WE ARE THE CHOICE OF THE BEST.



NAŠI PARTNERI
OUR PARTNERS

U skladu sa delatnošću našeg preduzeća i nastojanjima da poboljšamo kvalitet gradnje, dobavljači zauzimaju značajno mesto u realizaciji naših objekata:

ALUKÖNIGSTAHL Alukoeningstahl, www.alukoenigstahl.rs

SCHÜCO Schüco, www.schueco.com



Reynaers, www.reynaers.com



Lamilux, www.lamilux.com



Raico, www.raico.de



Wicona, www.wicona.com



Feal, www.feal.ba



Alumil, www.alumil.com



AGC Glass, www.agc-glass.eu



Guardian, www.guardianglass.com



Saint Gobain, www.saint-gobain.com



Konkav Konveks, www.konkav-konveks.com



Sky Glass, www.skyglass.rs



Warema, www.warema.com



Hella, www.hella.info

HunterDouglas Hunter Douglas, www.hunterdouglas.com

Rad sa proverenim partnerima, poštujući norme, odredbe i preporuke u skladu sa sertifikovanim zahtevima kvaliteta EU, garantuje kvalitet izrade i montaže.

In accordance with the activity of our company and the efforts to improve the quality of construction, suppliers take a significant place in the realization of our facilities:



Forster, www.forster-profile.ch



Jansen, www.jansen.com

Alubond Europe

Alubond, alubondeurope.com



Alucobond, www.alucobond.com



Eternit, www.eternit.at



Trespa, www.trespa.com



Fundermax, www.fundermax.at



SIKA, www.srb.sika.com



Ejot, www.ejot.rs



Fischer, www.fischer.group



Hilti, www.hilti.group



Würth, www.wurth.rs



Siegenia, www.siegenia.com



Fapim, www.fapim.it



GU, www.g-u.com



Sobinko, www.sobinco.com

Working with proven partners, respecting the norms, provisions and recommendations in line with the certified EU quality requirements, guarantees the quality of workmanship and assembly.



ARMONT SP d.o.o.
Batajnički drum 283,
11080 Zemun, Beograd
Republika Srbija
Tel: +381 (0)11 3750 141,
3750 142
Fax: +381 (0)11 7489 119
E-mail: office@armont.biz
www.armont.biz



Certificate Number 9858
ISO 9001